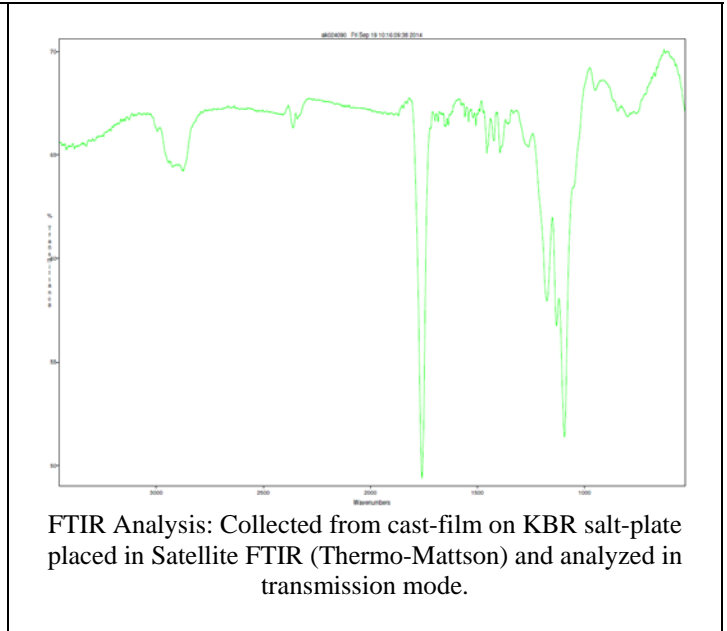
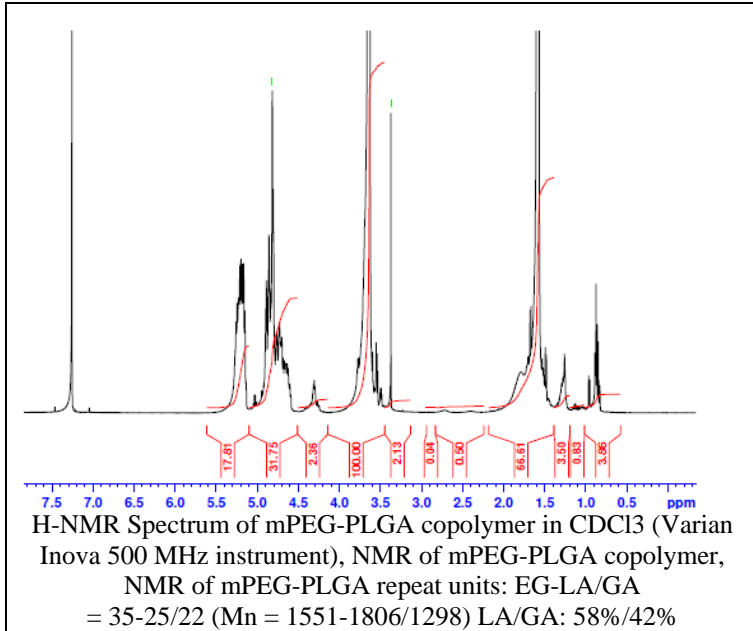


# No. AK02

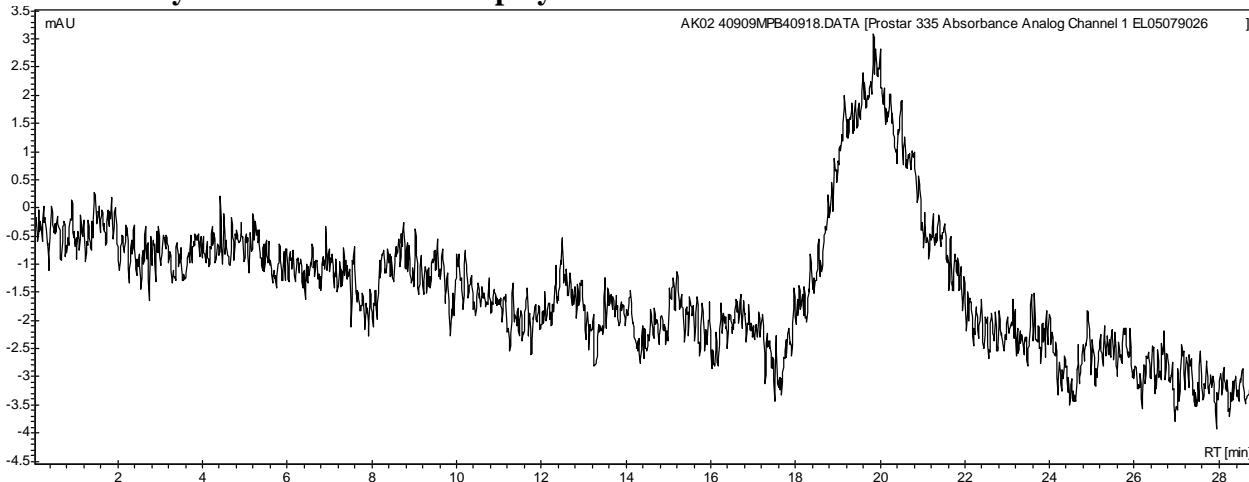
# Certificate of Analysis



Product Name: Methoxy Poly(ethylene glycol)-b-Poly(lactide-co-glycolide) (60:40)  
(M<sub>w</sub>: 2,000:4,000 Da) (Lot#: 40909MPB)



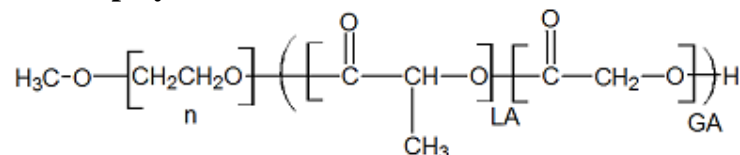
## • GPC analysis of mPEG-PLGA copolymer



Analysis Method: Varian Prostar system with 1 ml/min DCM flow across two Phenogel 5 $\mu$ m columns and one Resipore column (Agilent). Detection via UV/Vis, calibrated against polystyrene standards.

Polymer	M <sub>n</sub> (from GPC)	M <sub>w</sub> (from GPC)	PDI
mPEG-PLGA	7582	11,266	1.49
mPEG precursor	2468	2511	1.02

## • Structure of mPEG-PLGA copolymer



Material provided for research use only. Not for human use.