

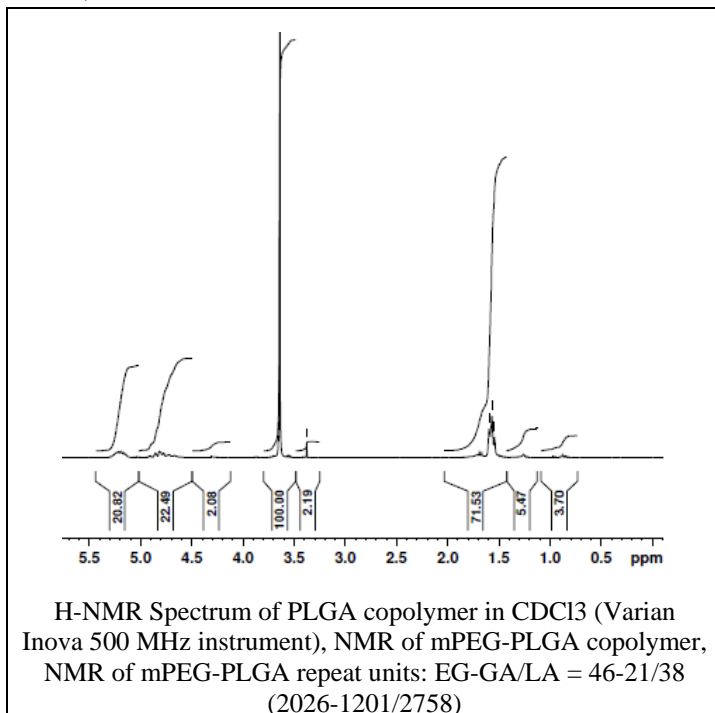
# No. AK02

# Certificate of Analysis

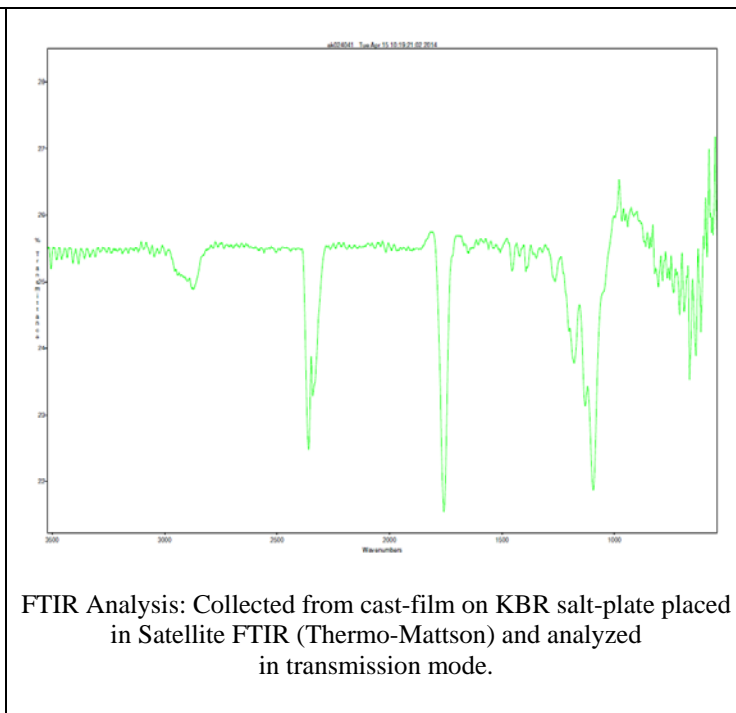


Product Name: Methoxy Poly(ethylene glycol)-b-Poly(lactide-co-glycolide) (68:32)  
(M<sub>w</sub>: 2,000 Da; 4,000 Da) (Lot#: 40410MPB)

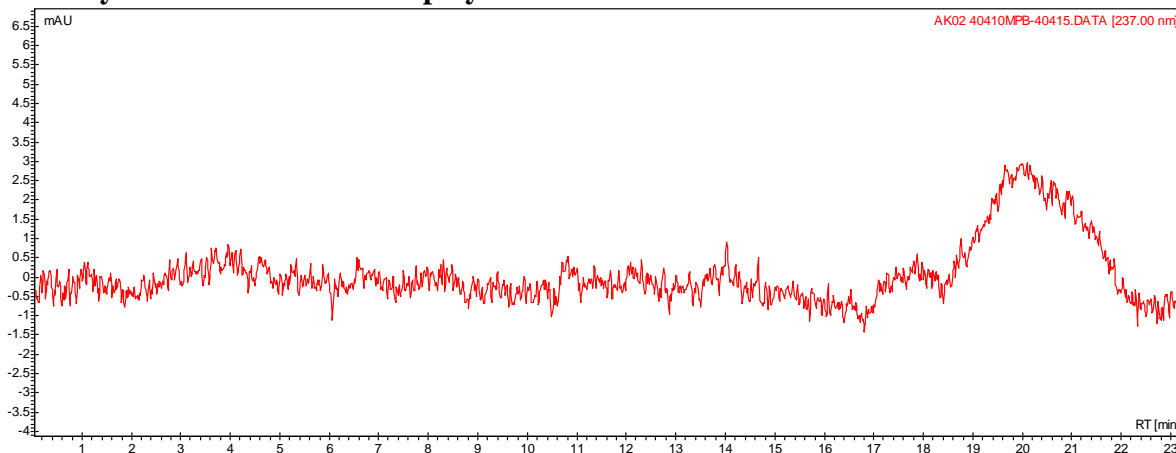
## H-NMR



## FTIR



- **GPC analysis of mPEG-PLGA copolymer**



Analysis Method: Varian Prostar system with 1 ml/min DCM flow across two Phenogel 5µm columns and one Resipore column (Agilent). Detection via UV/Vis, calibrated against polystyrene standards

Polymer	M <sub>n</sub> (from GPC)	M <sub>w</sub> (from GPC)	PDI
mPEG-PLGA	7376	10,675	1.45
mPEG precursor	2,298	2,637	1.15

- **Structure of mPEG-PLGA copolymer**

