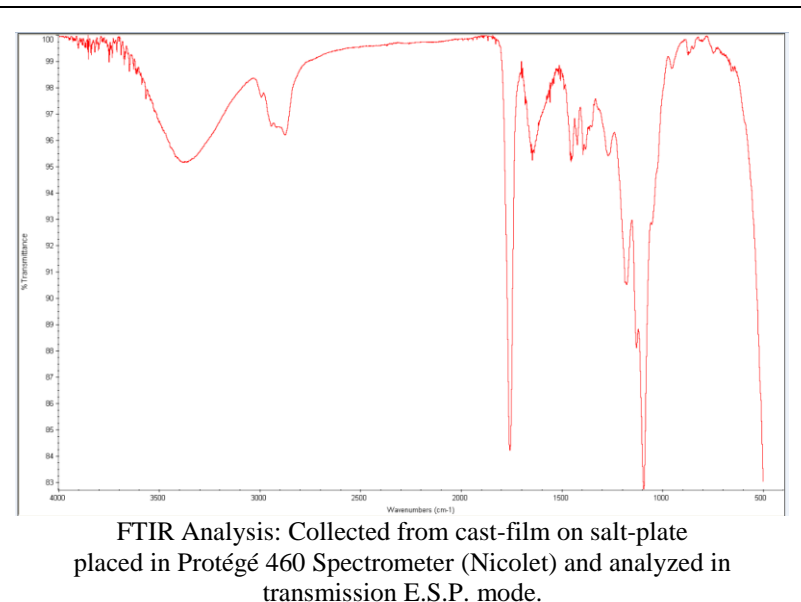
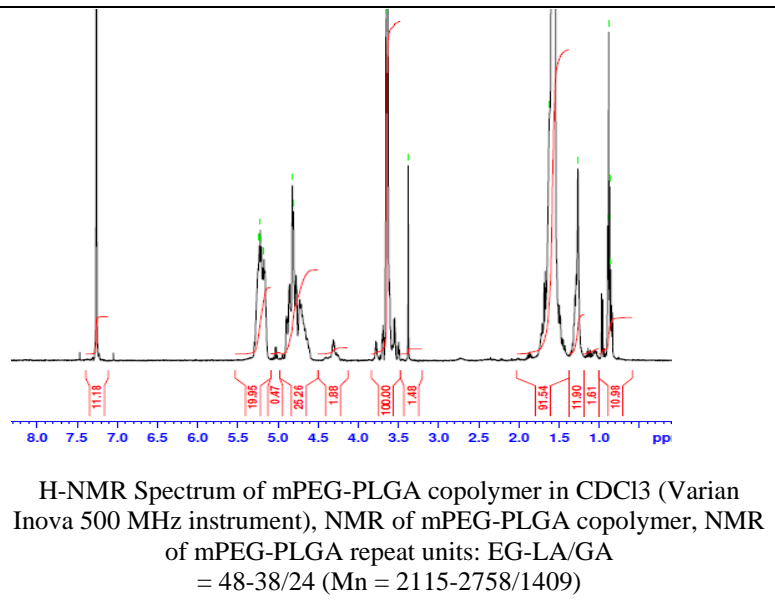


No. AK002

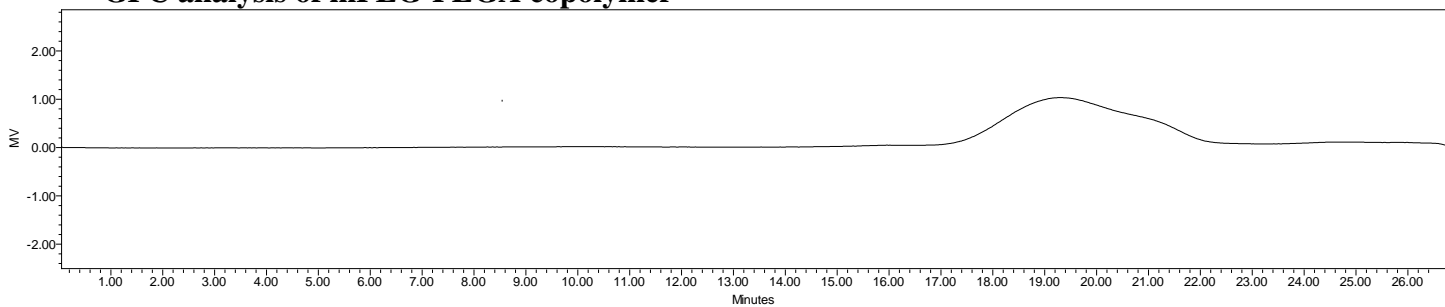
Certificate of Analysis



Product Name: Methoxy Poly(ethylene glycol)-b-Poly(lactide-co-glycolide) (60:40 LA:GA);
M_w: 2,000-4,000 Da) (Lot#: 170705NAE-A)



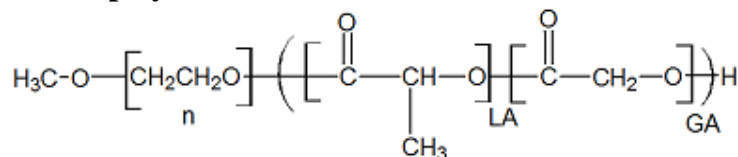
• GPC analysis of mPEG-PLGA copolymer



Analysis Method: Waters Empower system with 1 ml/min THF flow across three GPC columns. Detection via refractory index, calibrated against polystyrene standards (*PEG standards).

| Polymer | M _n (from GPC) | M _w (from GPC) | PDI |
|-----------|---------------------------|---------------------------|------|
| mPEG-PLGA | 7383 | 10587 | 1.43 |

• Structure of mPEG-PLGA copolymer



Material provided for research use only. Not for human use.