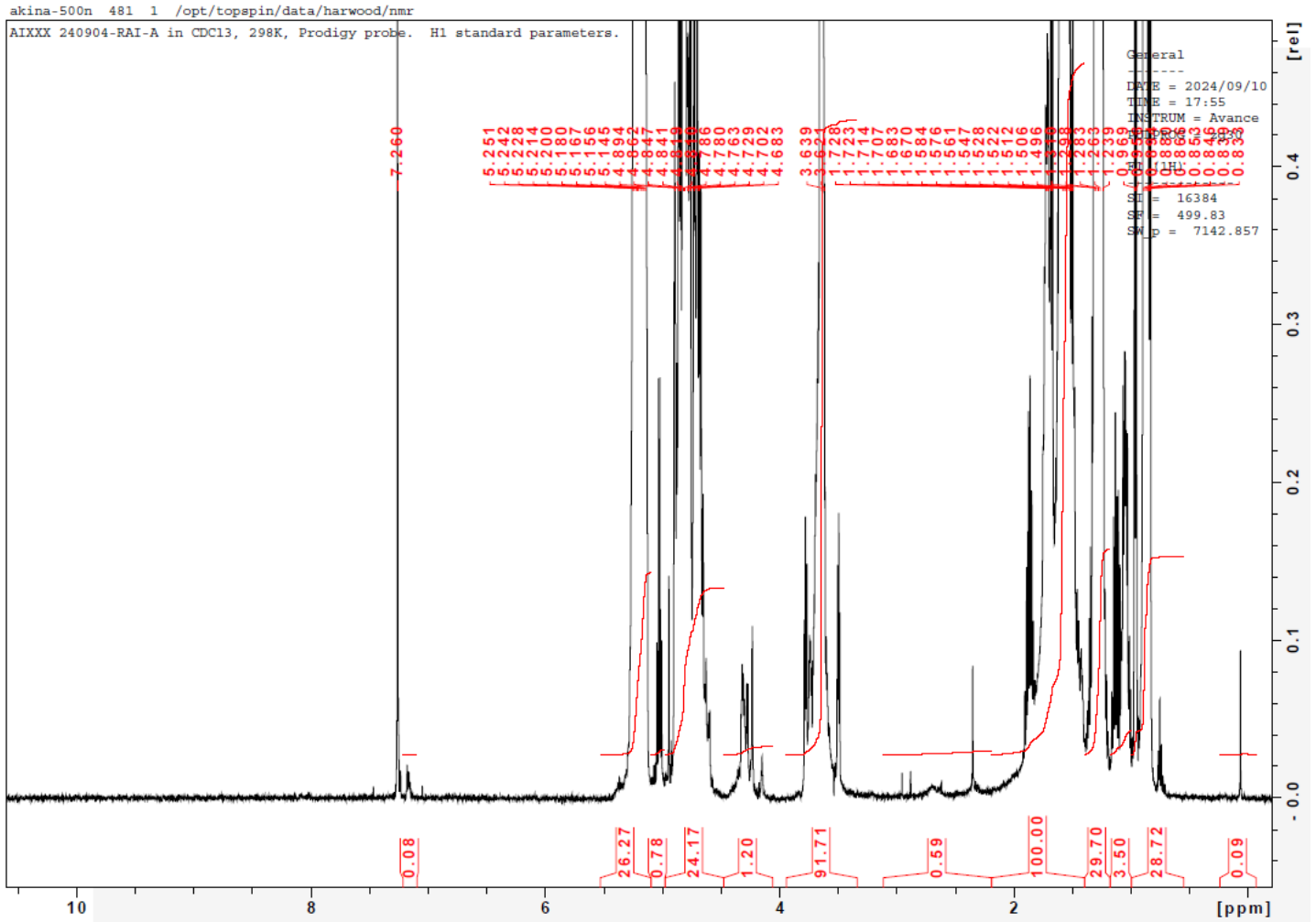


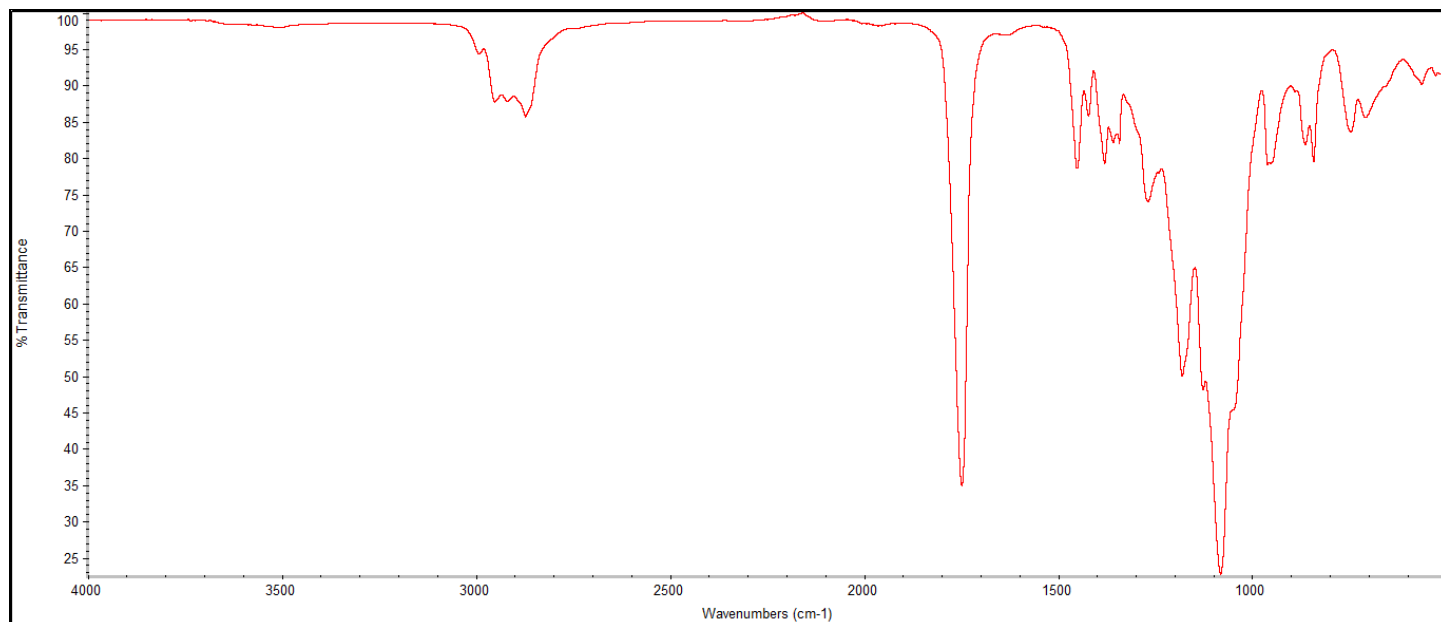
Product Name: Poly(lactide-co-glycolide)-b-Poly(ethylene glycol)-carboxylic acid endcap
(Mw~20,000 Da-5,000 Da, LA:GA 70:30) (Lot#: 240904RAI-A)

H-NMR



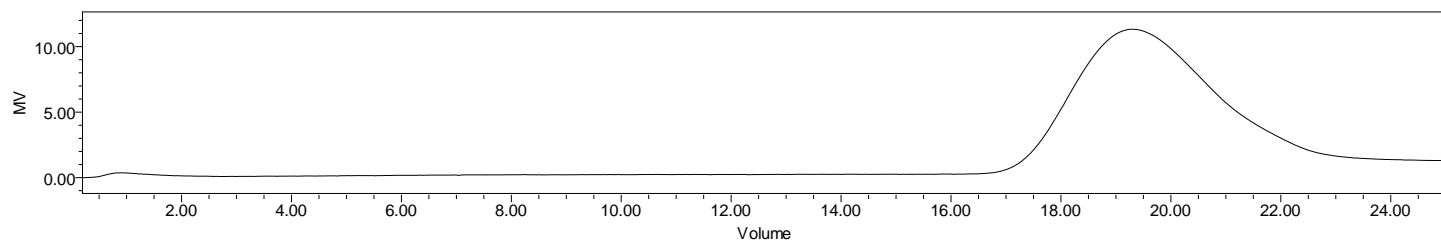
H-NMR: Spectrum of copolymers in CDCl3 (Bruker ≥300 MHz, PINMRF) NMR of PLGA-PEG-COOH copolymer: EG*/LA-GA =107*/263-56 (Mw EG*/LA:GA 4714*/18908-3273 Da) LA:GA 73%:27%

FTIR



FTIR Analysis: Collected from IS5 ID7-ATR spectrometer (Thermo Scientific) and analyzed in transmission mode.

GPC-ES



Polymer	M _n (from GPC)	M _w (from GPC)	PDI
PLGA-PEG-COOH	22,281	41,265	1.85
PEG precursor	M _n = 4700*		

GPC-ES Analysis Method: Waters Breeze 2 system with 1 ml/min THF flow across three GPC columns. Detection via refractive index, calibrated against polystyrene standards.

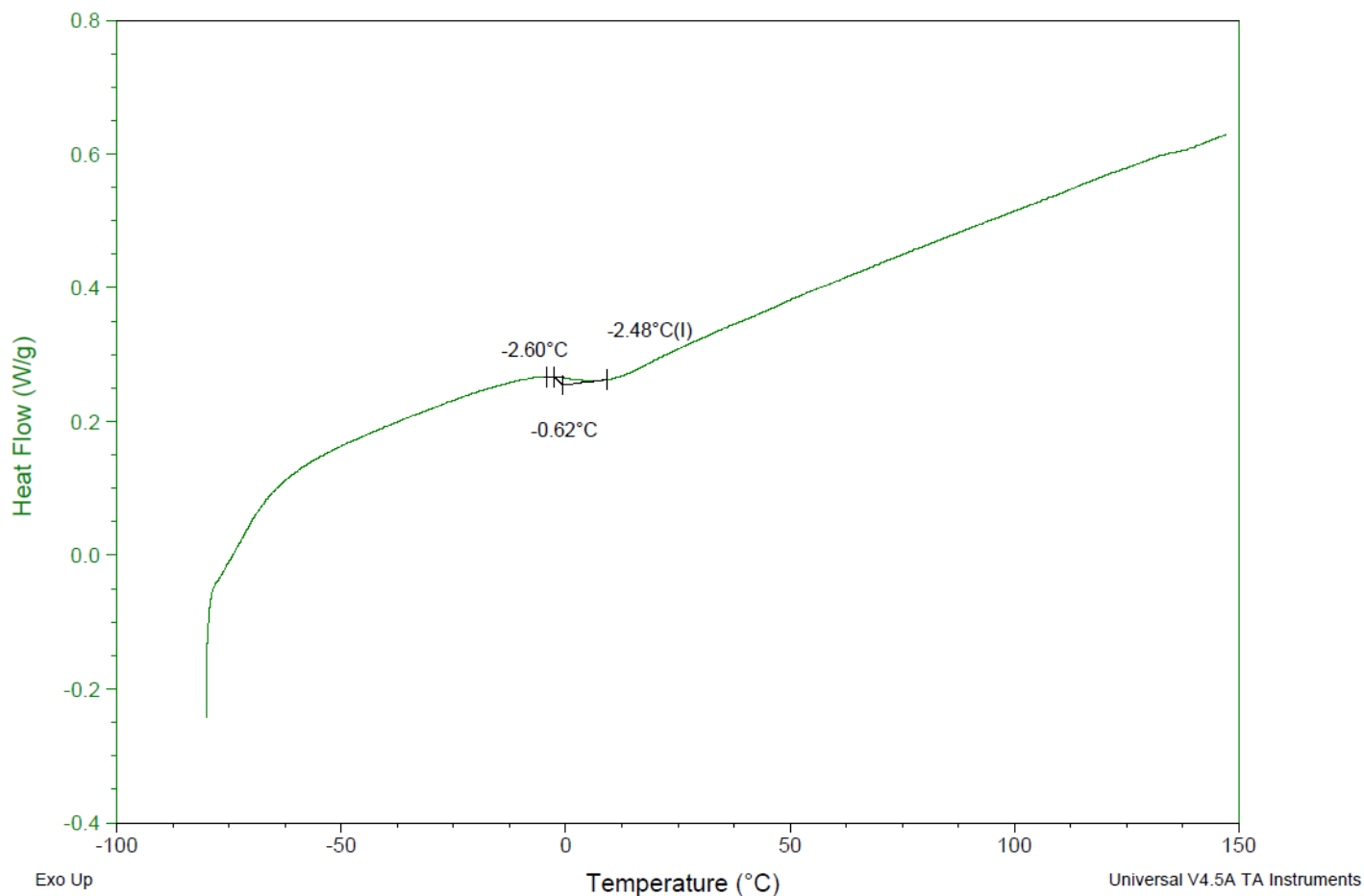
DSC

Sample: AIXXX 240904RAI-A
Size: 4.0000 mg
Method: Ramp

DSC

File: \\...COA\AIXXX 240904RAI-A DSC.002

Run Date: 12-Sep-2024 11:27
Instrument: DSC Q2000 V24.11 Build 124



DSC Testing: 1-5 mg sample tested in crimped aluminum pan on a TA Instruments Model Q2000 with procedure equilibration 100 °C, isothermal 5 minutes, equilibrate -80 °C, data on, ramp 10 °C/min to 150 °C. Tg = -2.48 °C

IV

Inherent Viscosity: 0.282 dL/g (calculated from kinematic viscosity at 2% w/v Acetone on Rheosense microVISC, n=3) at 25°C.

Structure of copolymers

