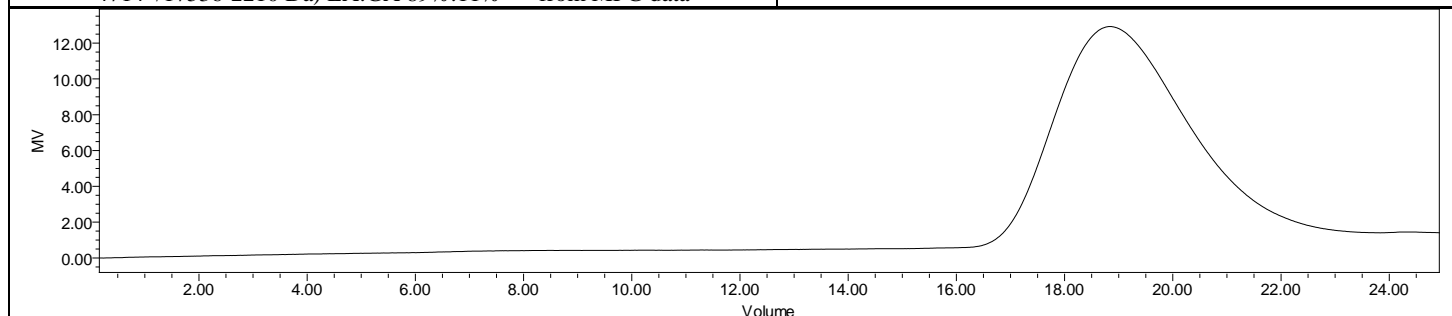
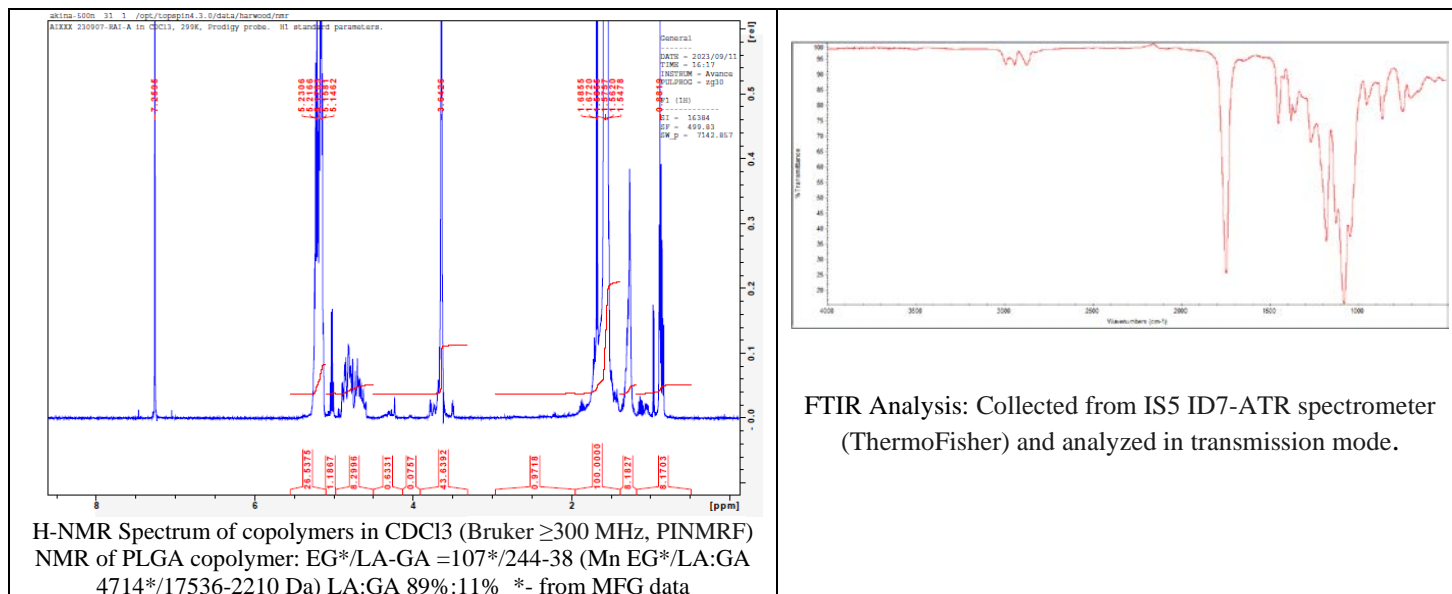


# No. AI261

# Certificate of Analysis



Product Name: Poly(lactide-co-glycolide)-b-Poly(ethylene glycol)-carboxylic acid endcap LA:GA 90:10 (Mw ~ 20,000 Da:5,000 Da) (Lot#: 230907RAI-A)



GPC-ES Analysis Method: Waters Breeze 2 system with 1 ml/min THF flow across three GPC columns. Detection via refractive index, calibrated against polystyrene standards.

Polymer	M <sub>n</sub> (from GPC)	M <sub>w</sub> (from GPC)	PDI
PLGA-PEG-COOH	33,322	55,054	1.65
PEG-Precursor*		4700*	

\*- from MFG data

## • Structure of PLGA-PEG-COOH copolymers

