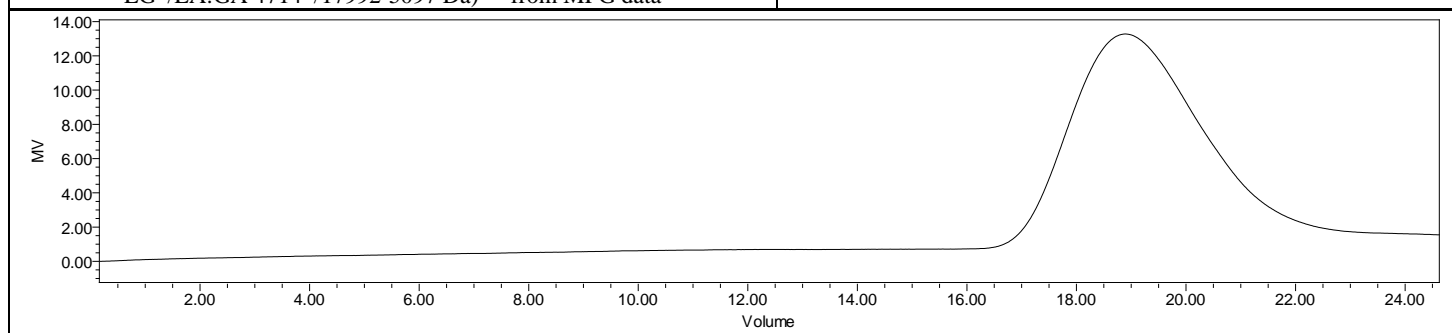
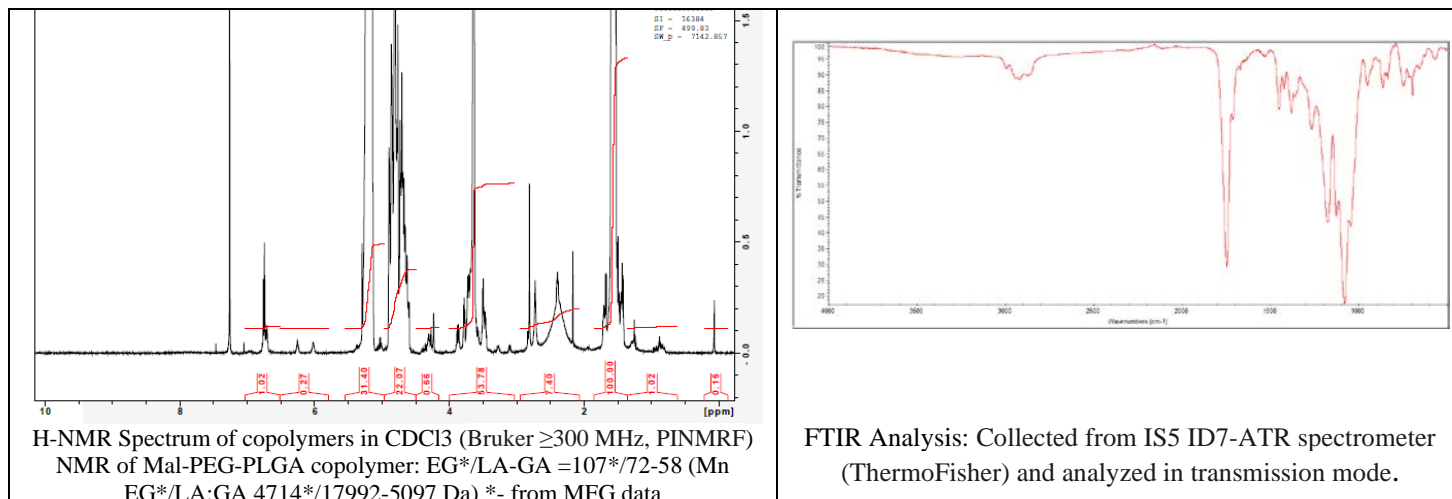


No. AI259

Certificate of Analysis



Product Name: Maleimide-Poly(ethylene glycol)-*b*-Poly(lactide-co-glycolide) copolymers (75:25 LA:GA) ($M_w \sim 5,000-25,000$ Da) (Lot#: 230928RAI-A)

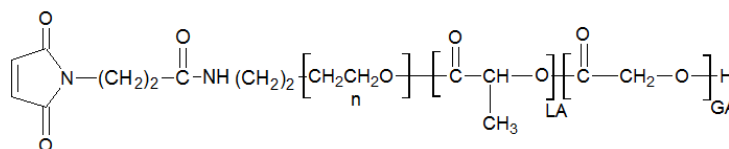


GPC-ES Analysis Method: Waters Breeze 2 system with 1 ml/min THF flow across three GPC columns. Detection via refractive index, calibrated against polystyrene standards.

Polymer	M_n (from GPC)	M_w (from GPC)	PDI
Mal-PEG-PLGA	31,832	53,905	1.69
PEG-Precursor*		4700*	

*- from MFG data

• Structure of Mal-PEG-PLGA diblock copolymers



Approved By:
Amie Tyler
Quality Manager