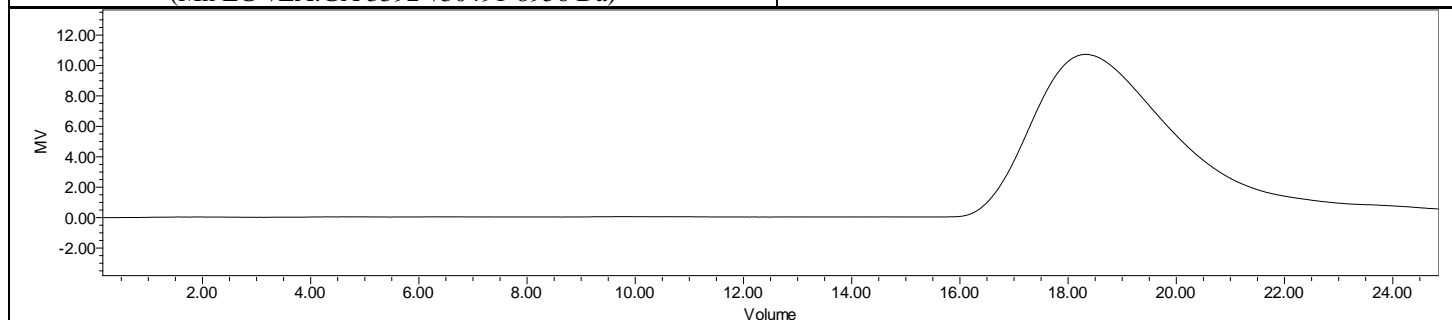
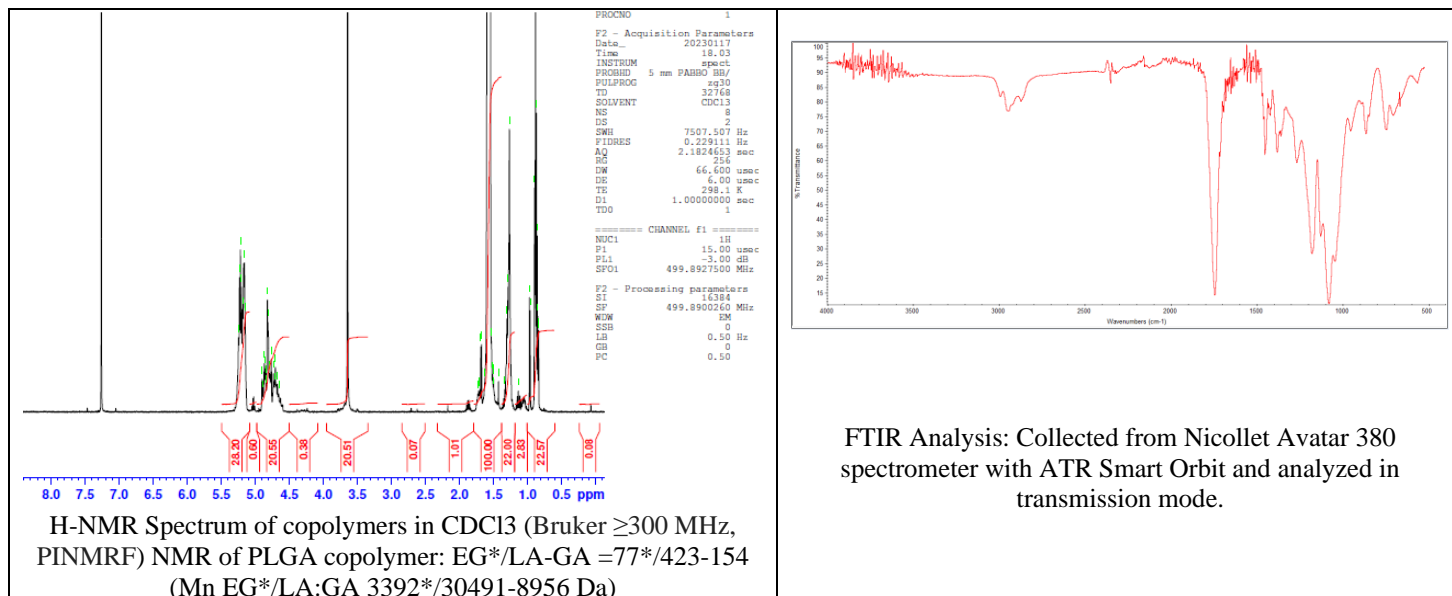


No. AI251

Certificate of Analysis



Product Name: Poly(lactide-co-glycolide)-b-Poly(ethylene glycol)-carboxylic acid endcap (Mw ~ 40,000 Da; 3,400 Da, LA:GA 75:25) (Lot# 230112RAI-A)



Polymer	M _n (from GPC)	M _w (from GPC)	PDI
PLGA-PEG-COOH	50,341	78,735	1.56
PEG-precursor*	3400*		

*- from MFG data

Structure of PLGA-PEG-COOH copolymers

