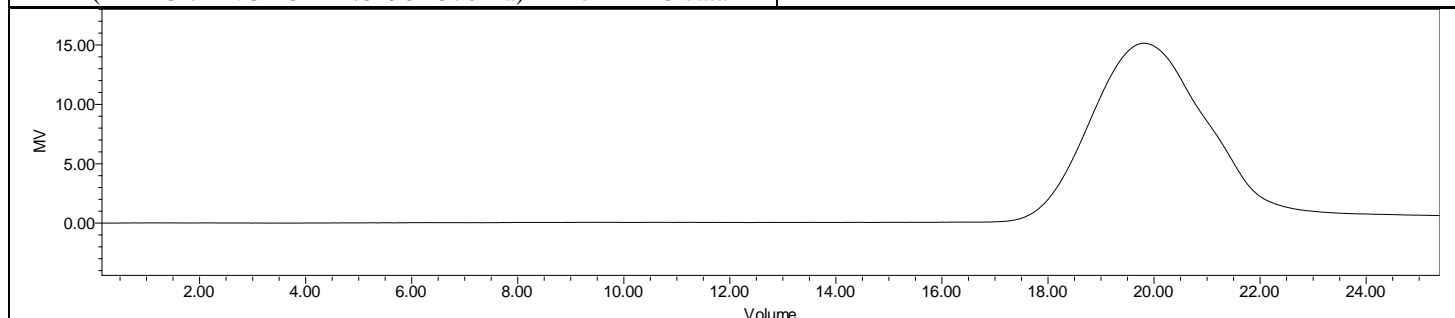
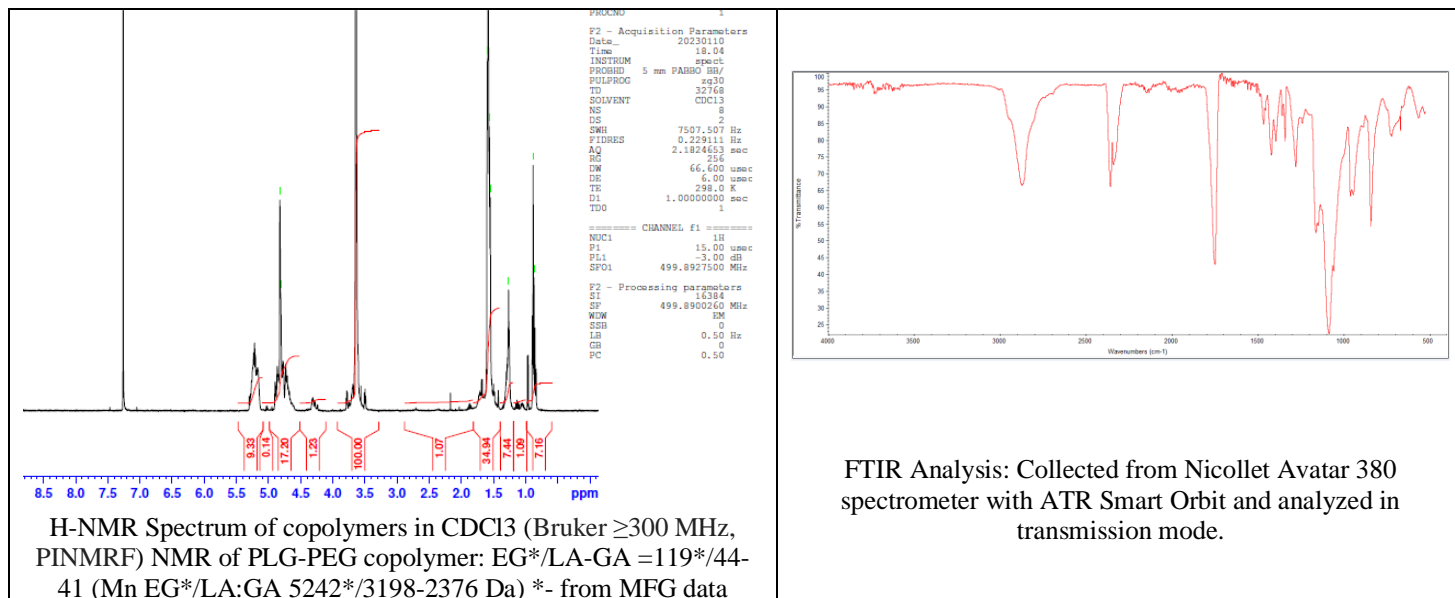


# No. AI250

# Certificate of Analysis



Product Name: Poly(lactide-co-glycolide)-b-Poly(ethylene glycol)-carboxylic acid endcap (Mw ~ 5,000 Da; 5,000 Da) (Lot#: 230103RAI-B)



Polymer	M <sub>n</sub> (from GPC)	M <sub>w</sub> (from GPC)	PDI
PLGA-PEG-COOH	21,832	31,503	1.44
PEG-precursor*		5258*	

\*- from MFG data

## • Structure of PLGA-PEG-COOH copolymers

