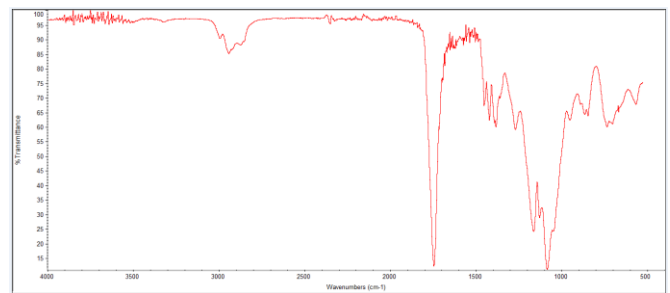
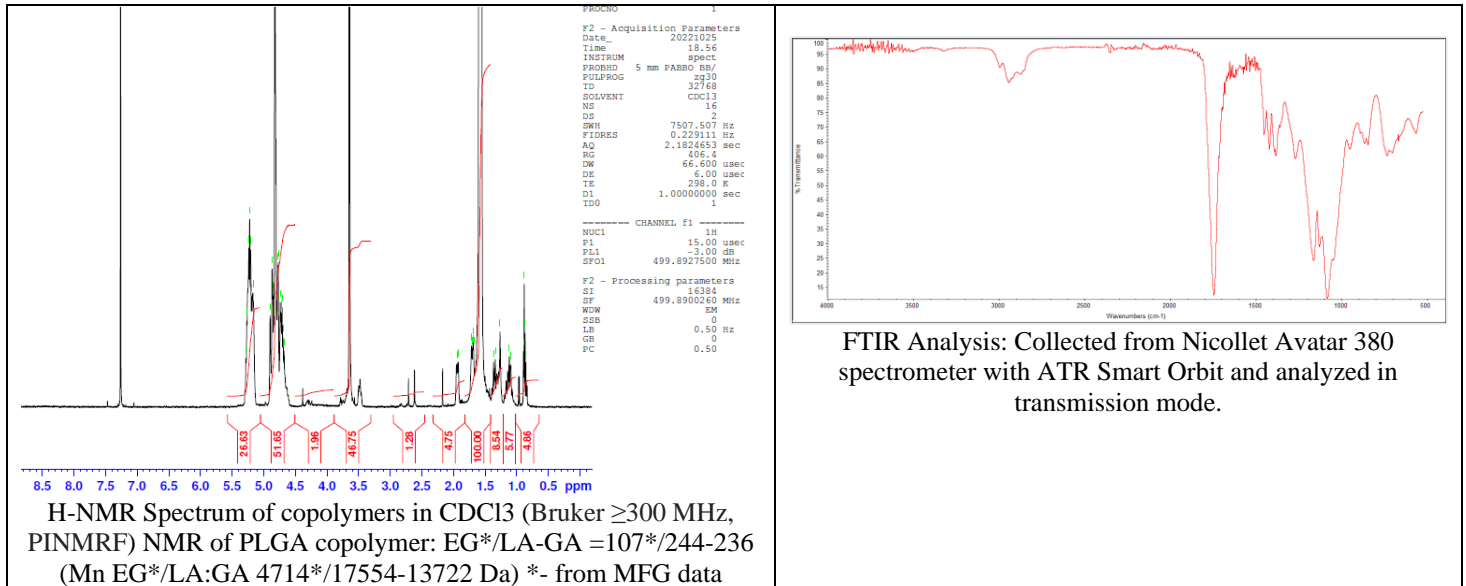


# No. AI247

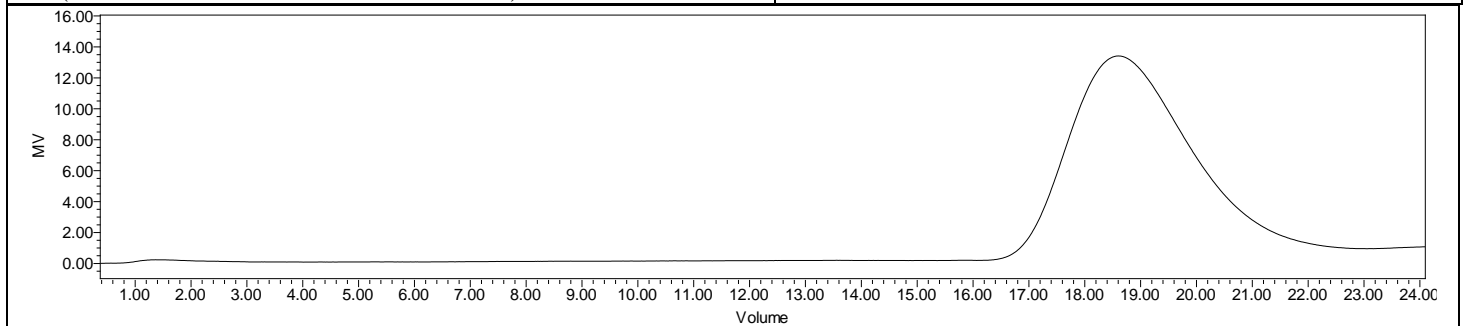
# Certificate of Analysis



Product Name: Poly(lactide-co-glycolide)-b-Poly(ethylene glycol)-folate  
(30,000-5,000Da) Lot #221011RAI-B



FTIR Analysis: Collected from Nicolet Avator 380 spectrometer with ATR Smart Orbit and analyzed in transmission mode.



GPC-ES Analysis Method: Waters Breeze 2 system with 1 ml/min THF flow across three GPC columns. Detection via refractive index, calibrated against polystyrene standards.

Polymer	M <sub>n</sub> (from GPC)	M <sub>w</sub> (from GPC)	PDI
PLGA-PEG-Folate	40,648	62,444	1.54
PEG-precursor*		4700*	

\*- from MFG data

## • Structure of PLGA-PEG-Folate

