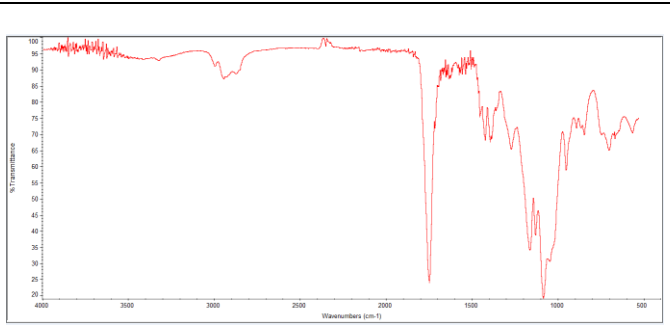
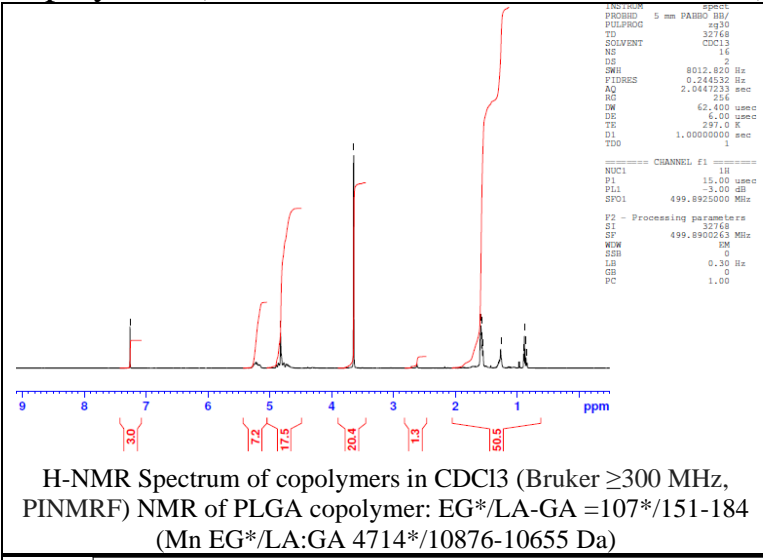


No. AI245

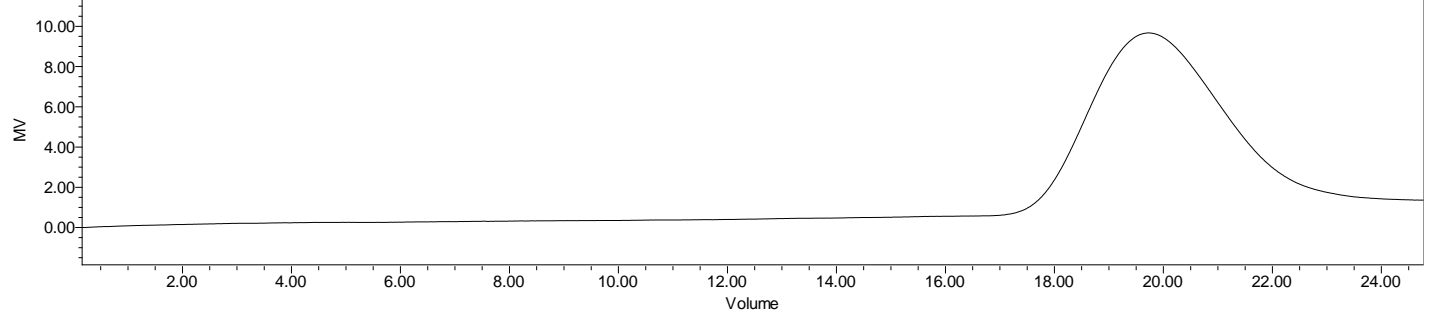
Certificate of Analysis



Product Name: Poly(lactide-co-glycolide)-b-Poly(ethylene glycol)-Mannose
Copolymers (LA:GA 50:50, $M_w \sim 20,000\text{-}5,000\text{Da}$) (Lot#: 220919RAI-A)



FTIR Analysis: Collected from Nicolet Avatar 380 spectrometer with ATR Smart Orbit and analyzed in transmission mode.



GPC-ES Analysis Method: Waters Breeze 2 system with 1 ml/min THF flow across three GPC columns. Detection via refractive index, calibrated against polystyrene standards.

Polymer	M_n (from GPC)	M_w (from GPC)	PDI
PLGA-PEG-Man	25,794	35,787	1.39
PEG-Precursor*	4700*		

*- from MFG data

- Structure of PLGA-PEG-Mannose copolymers

