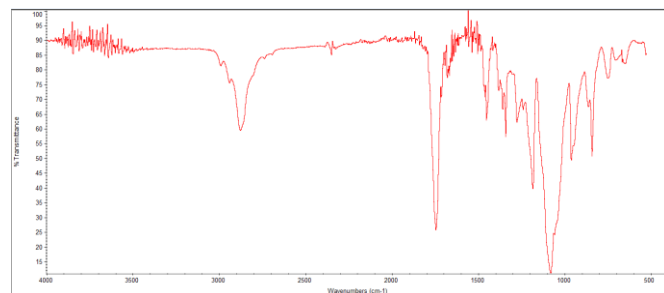
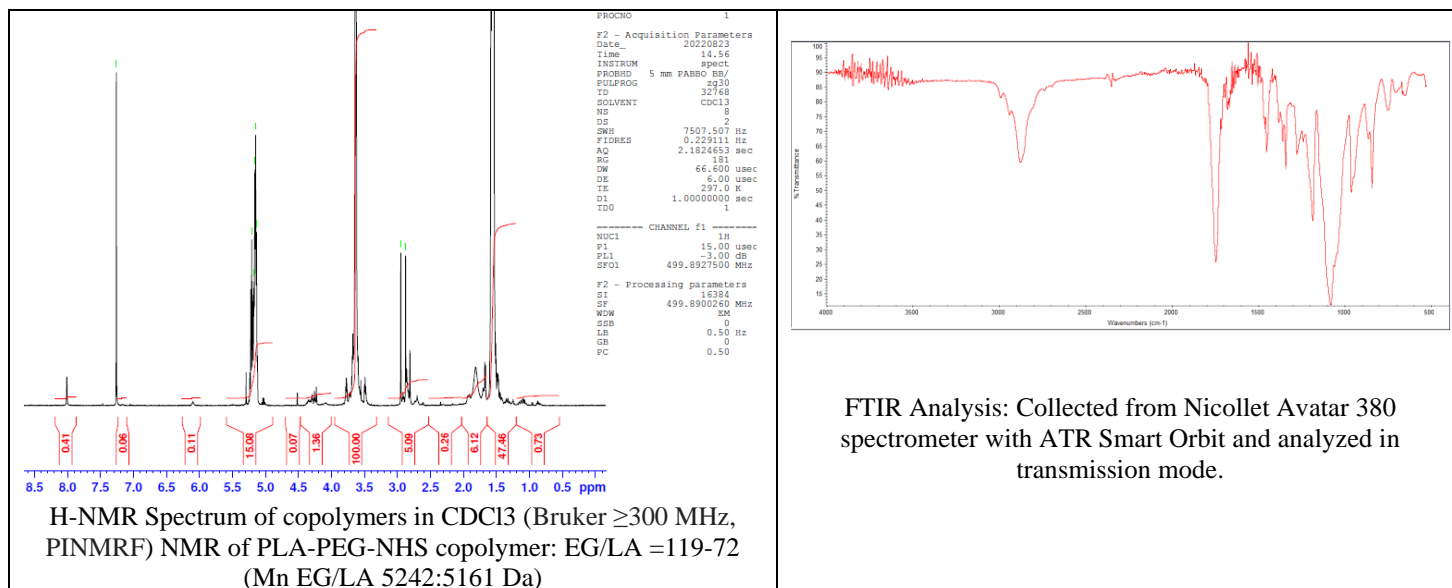


No. AI238

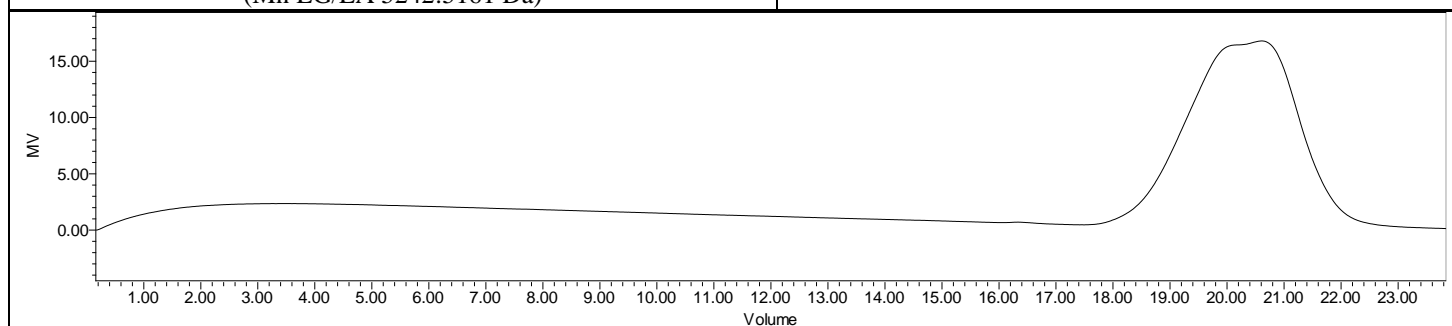
Certificate of Analysis



Product Name: Poly(D,L-lactide)-b-Poly(ethylene glycol)-N-hydroxysuccinimide
(Mw ~ 5,000:5,000 Da) (Lot#: 220816ERG-A)



FTIR Analysis: Collected from Nicolet Avator 380 spectrometer with ATR Smart Orbit and analyzed in transmission mode.



GPC-ES Analysis Method: Waters Breeze 2 system with 1 ml/min THF flow across three GPC columns. Detection via refractive index, calibrated against polystyrene standards.

Polymer	M _n (from GPC)	M _w (from GPC)	PDI
PLA-PEG-NHS	19,008	25,529	1.34
PEG-precursor*		5258*	

*- from MFG data

Structure of PLA-PEG-NHS copolymers

