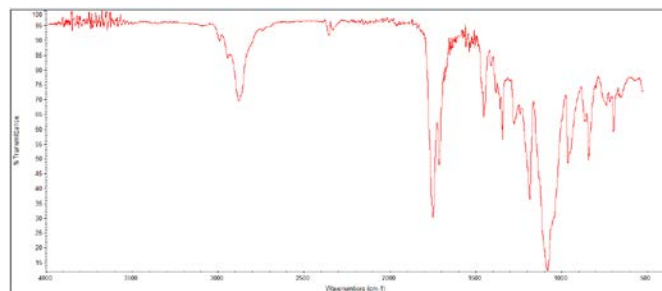
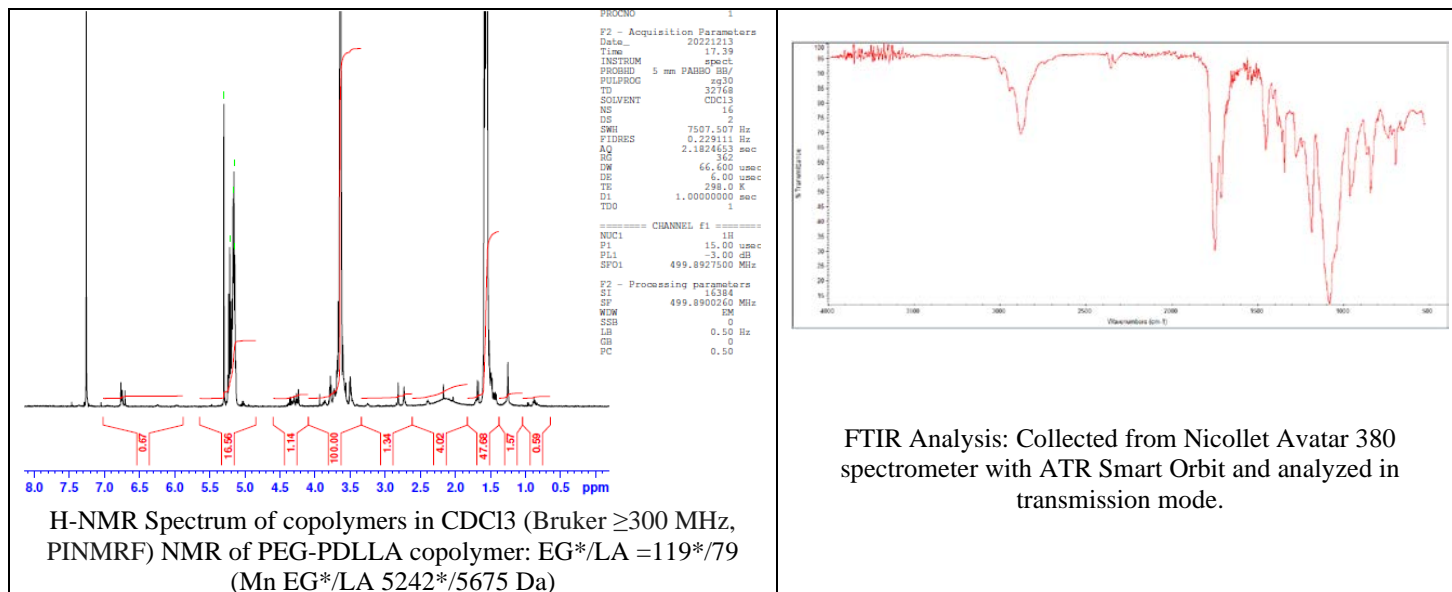


No. AI237

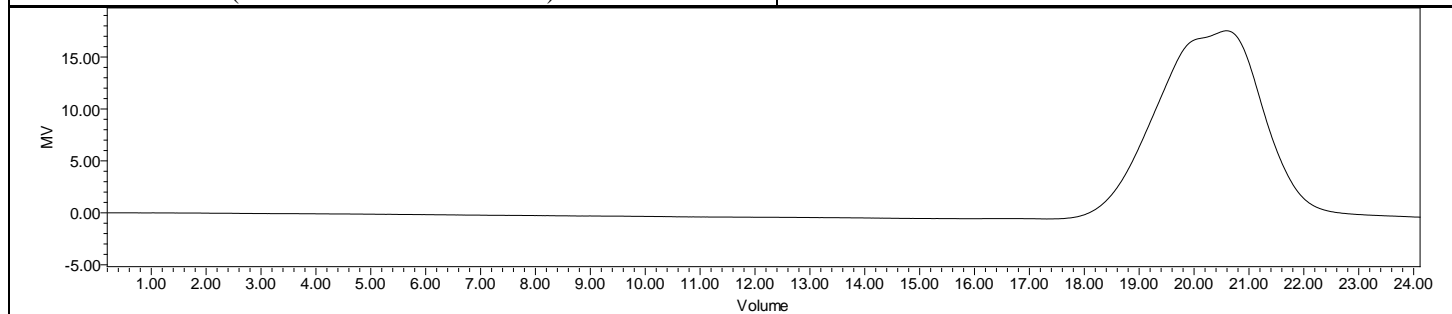
Certificate of Analysis



Product Name: Maleimide-Poly(ethylene glycol)-b-Poly(D,L-lactide)
(MW 5,000:5,000 Da) (Lot#: 220802RAI-A)



FTIR Analysis: Collected from Nicolet Avatar 380 spectrometer with ATR Smart Orbit and analyzed in transmission mode.



GPC-ES Analysis Method: Waters Breeze 2 system with 1 ml/min THF flow across three GPC columns. Detection via refractive index, calibrated against polystyrene standards.

Polymer	M _n (from GPC)	M _w (from GPC)	PDI
PDLLA-PEG-Mal	18,060	24,534	1.36
PEG-Precursor*		5258*	

*- from MFG data

Structure of Mal-PEG-PDLLA copolymers

