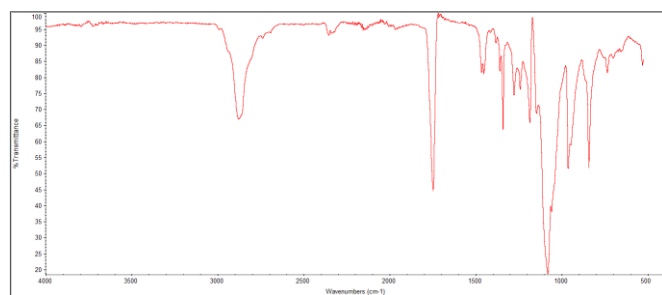
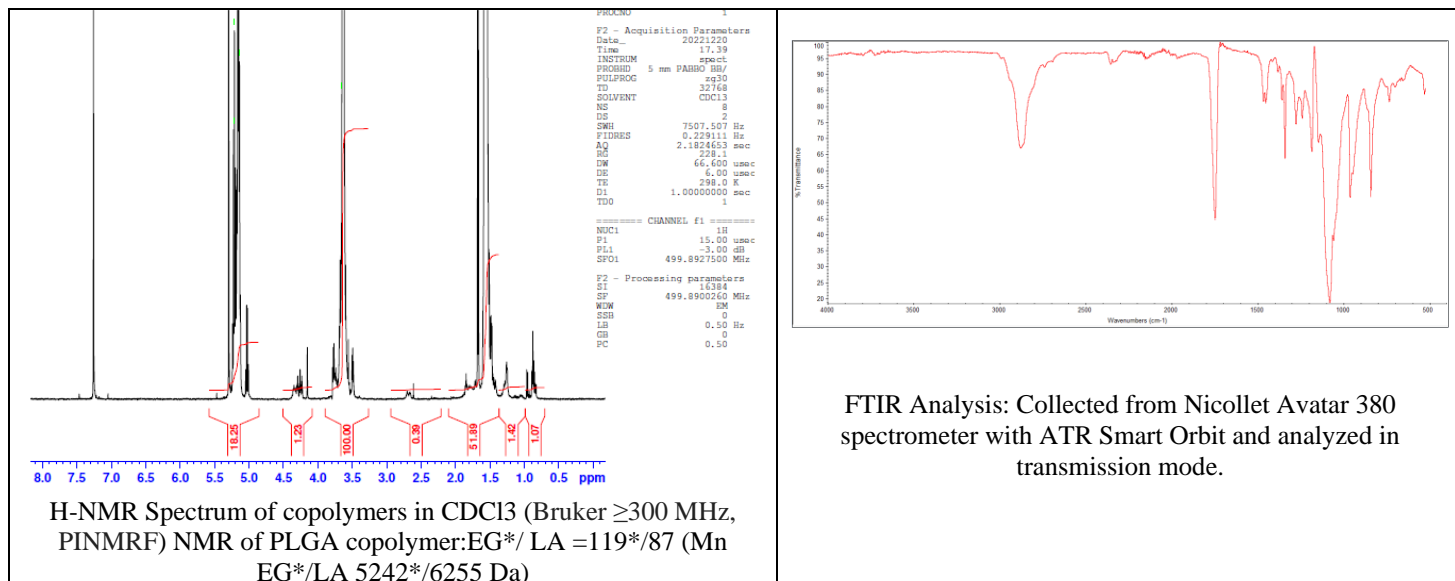


# No. AI236

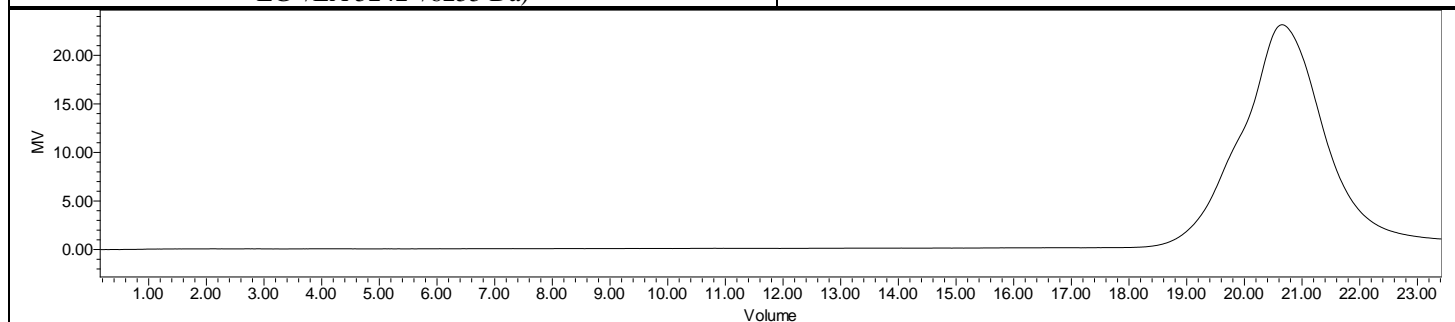
# Certificate of Analysis



Product Name: Poly(D,L-lactide)-b-Poly(ethylene glycol)- carboxylic acid copolymers (5,000-5,000 Da) (Lot#: 221214RAI-A)



FTIR Analysis: Collected from Nicolet Avator 380 spectrometer with ATR Smart Orbit and analyzed in transmission mode.



GPC-ES Analysis Method: Waters Breeze 2 system with 1 ml/min THF flow across three GPC columns. Detection via refractive index, calibrated against polystyrene standards.

Polymer	M <sub>n</sub> (from GPC)	M <sub>w</sub> (from GPC)	PDI
PDLLA-PEG-COOH	14,253	17,786	1.25
PEG precursor*		5258*	

\*- from MFG data

## Structure of PDLLA-PEG-COOH copolymers

