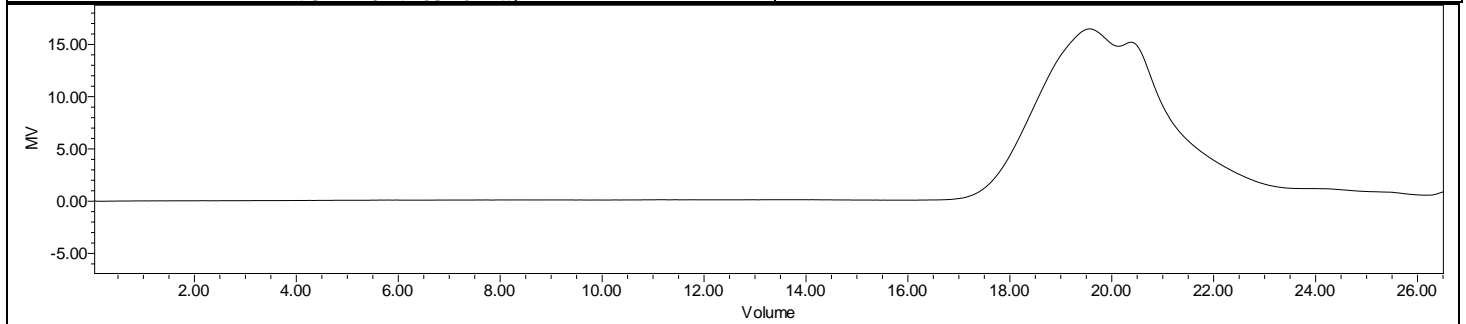
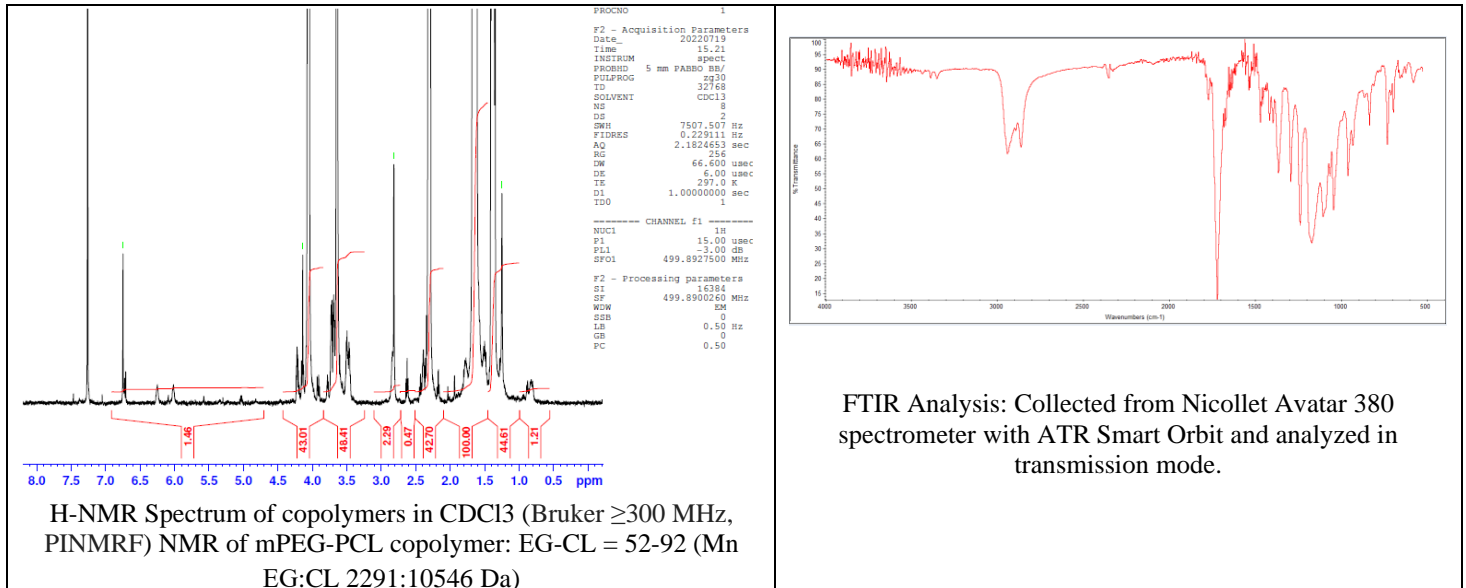


No. AI234

Certificate of Analysis



Product Name: Maleimide-*b*-Poly(ethylene glycol)-Poly(caprolactone)
 copolymers ($M_w \sim 2,000:10,000$ Da) (Lot#: 220708RAI-A)



GPC-ES Analysis Method: Waters Breeze 2 system with 1 ml/min THF flow across three GPC columns. Detection via refractive index, calibrated against polystyrene standards.

Polymer	M_n (from GPC)	M_w (from GPC)	PDI
Mal-PEG-PCL	18,989	35,589	1.87
PEG Precursor*		2300*	

*- from MFG data

- Structure of Mal-PEG-PCL copolymers**

