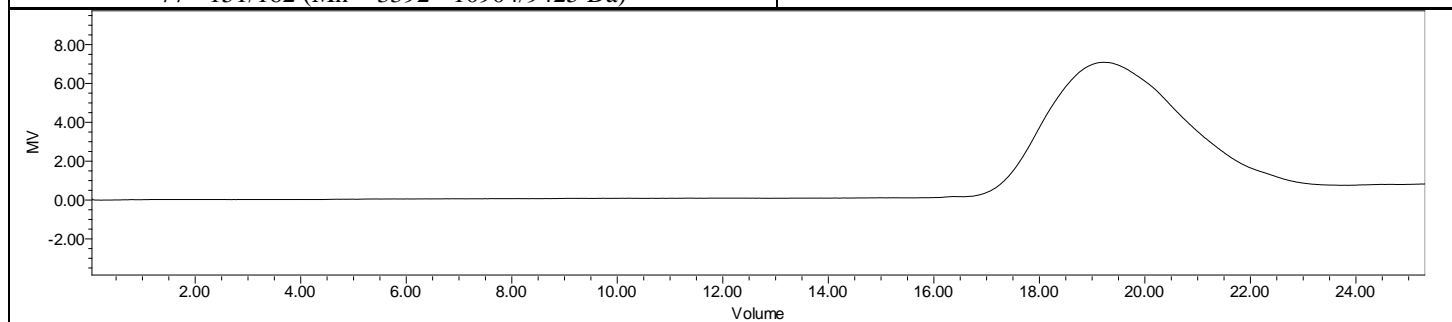
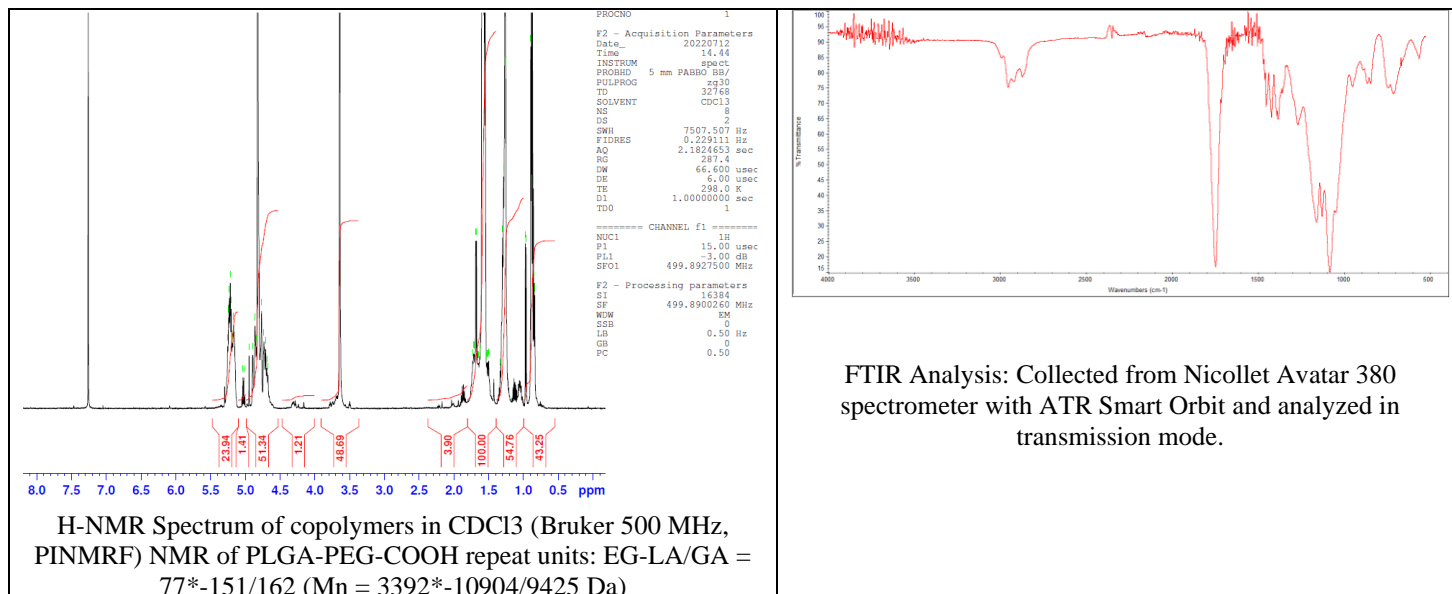


No. AI233

Certificate of Analysis



Product Name: Poly(lactide-co-glycolide)-b-Poly(ethylene glycol)-carboxylic acid endcap (Mw ~20,000 Da-3,400 Da, La:Ga 50:50) (Lot#: 220706RAI-A)



GPC-ES Analysis Method: Waters Breeze 2 system with 1 ml/min THF flow across three GPC columns. Detection via refractive index, calibrated against polystyrene standards.

Polymer	M _n (from GPC)	M _w (from GPC)	PDI
PLGA-PEG-COOH	23,976	44,394	1.85
HO-PEG-COOH*		3400*	

*- from MFG data

• Structure of PLGA-PEG-COOH copolymers

