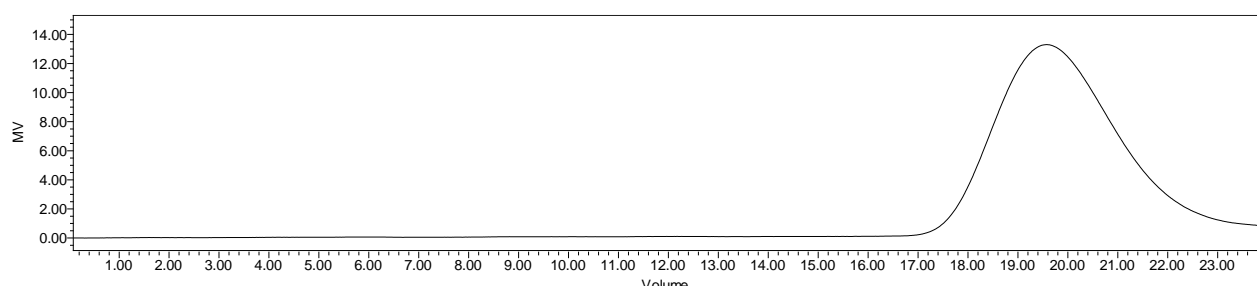
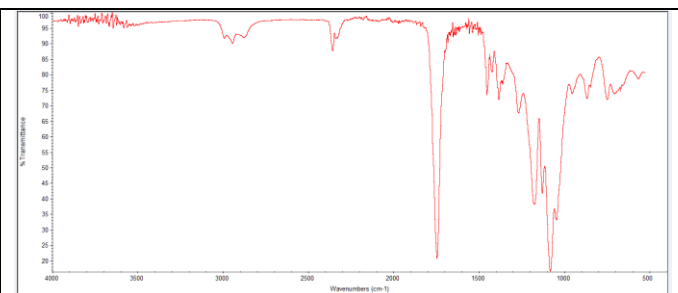
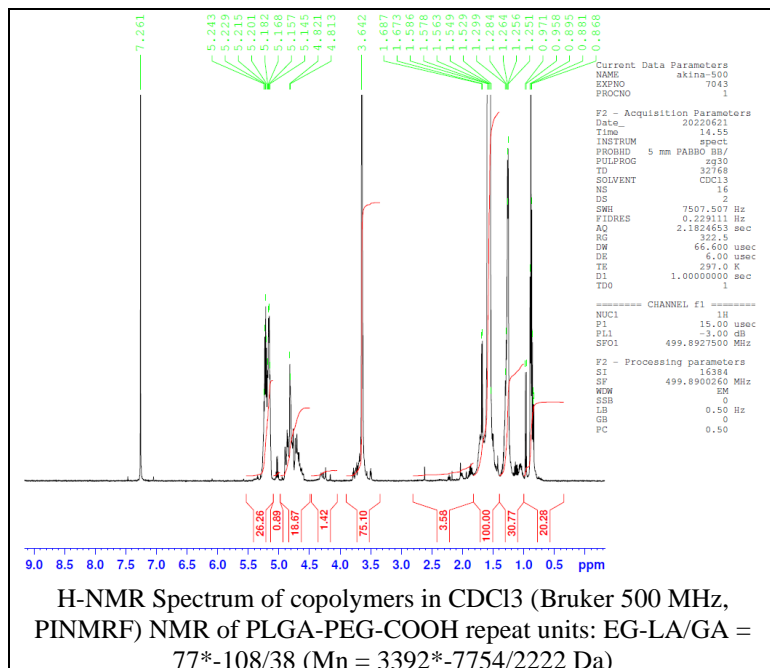


No. AI231

Certificate of Analysis



Product Name: Poly(lactide-co-glycolide)-b-Poly(ethylene glycol)-carboxylic acid endcap (Mw ~10,000 Da-3,400 Da, La:Ga 75:25) (Lot#: 220616RAI-A)



Polymer	M _n (from GPC)	M _w (from GPC)	PDI
PLGA-PEG-COOH	21,721	36,988	1.70
HO-PEG-COOH*		3400	

*- from MFG data

• **Structure of PLGA-PEG-COOH copolymers**

