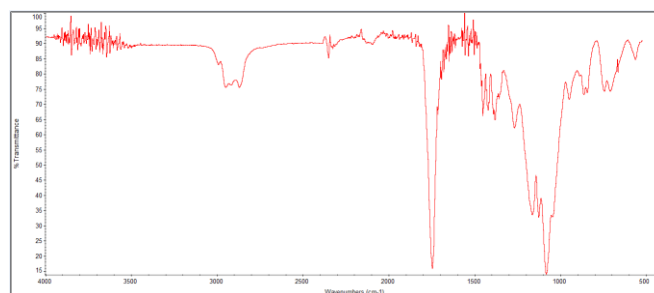
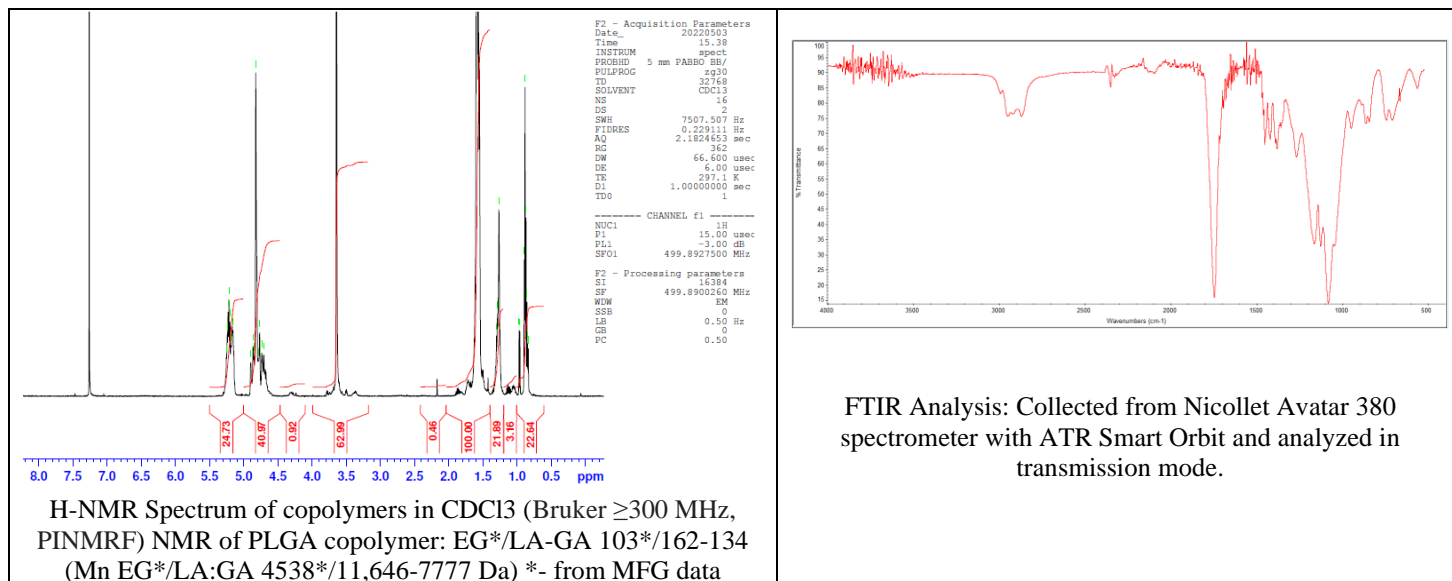


No. AI228

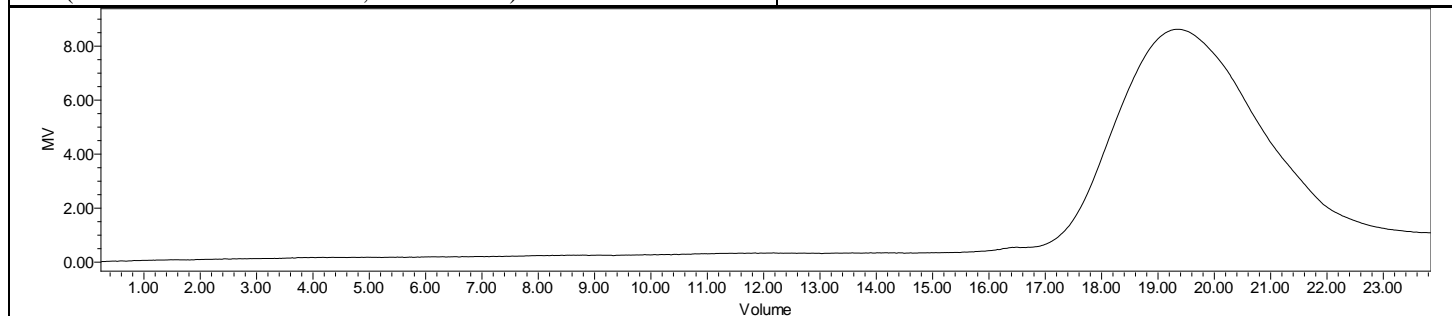
Certificate of Analysis



Product Name: Poly(lactide-co-glycolide)-b-Poly(ethylene glycol)-Azide copolymers (Mw ~ 20,000:5,000Da) (Lot# 220425AHT-A)



FTIR Analysis: Collected from Nicolet Avator 380 spectrometer with ATR Smart Orbit and analyzed in transmission mode.



GPC-ES Analysis Method: Waters Breeze 2 system with 1 ml/min THF flow across three GPC columns. Detection via refractive index, calibrated against polystyrene standards.

Polymer	M _n (from GPC)	M _w (from GPC)	PDI
PLGA-PEG-azide	25,974	43,115	167
PEG-precursor*		4555*	

*- from MFG data

Structure of PLGA-PEG-azide copolymers

