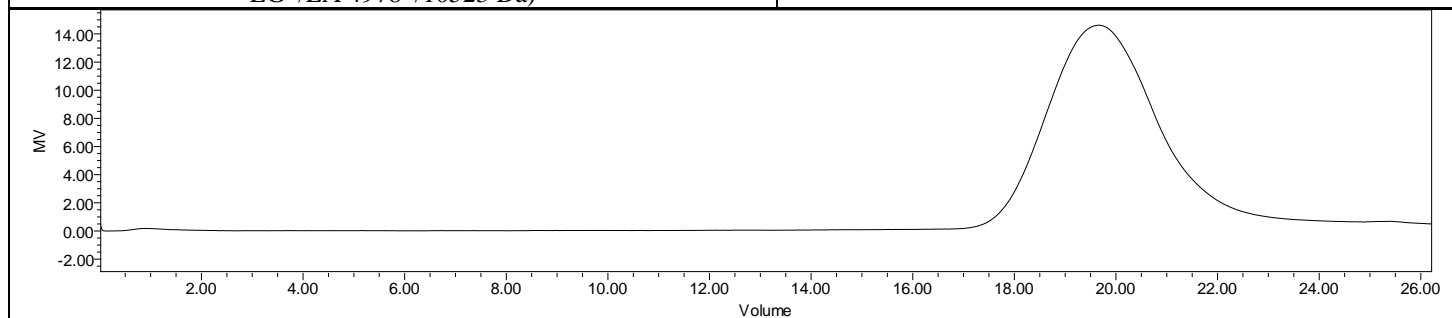
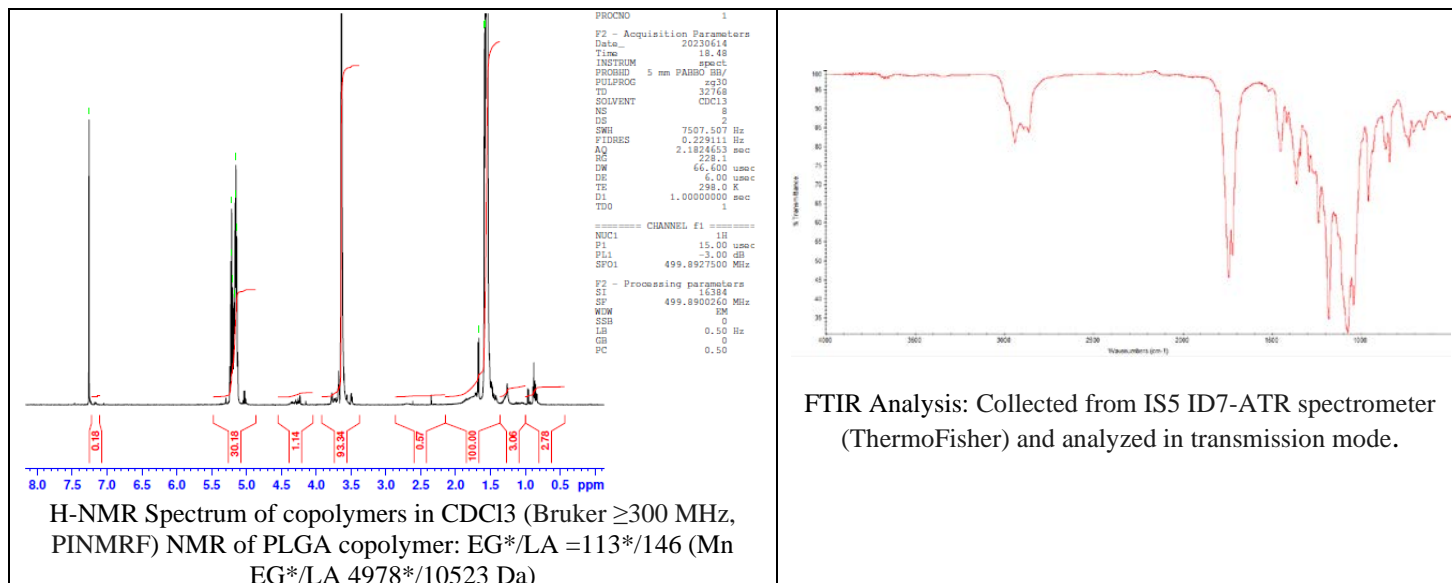


# No. AI223

# Certificate of Analysis



Product Name: Poly((D,L)lactide)-b-Poly(ethylene glycol)- carboxylic acid copolymers (10,000 Da – 5000 Da ) (Lot#: 230602RAI-A)

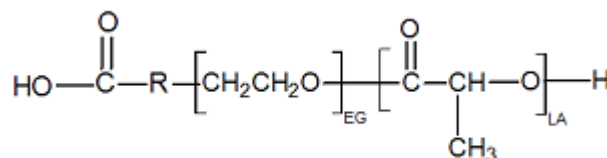


GPC-ES Analysis Method: Waters Breeze 2 system with 1 ml/min THF flow across three GPC columns. Detection via refractive index, calibrated against polystyrene standards.

Polymer	M <sub>n</sub> (from GPC)	M <sub>w</sub> (from GPC)	PDI
PDLLA-PEG-COOH	24,825	35,928	1.45
PEG-precursor*		4996*	

\*- from MFG data

## Structure of P(D,L)La-PEG-COOH copolymers



Approved By:  
*Amie Tyler*  
Quality Manager