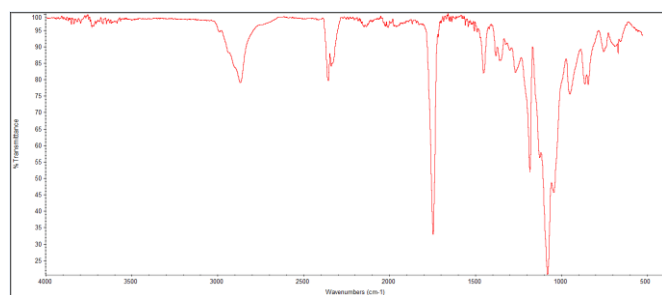
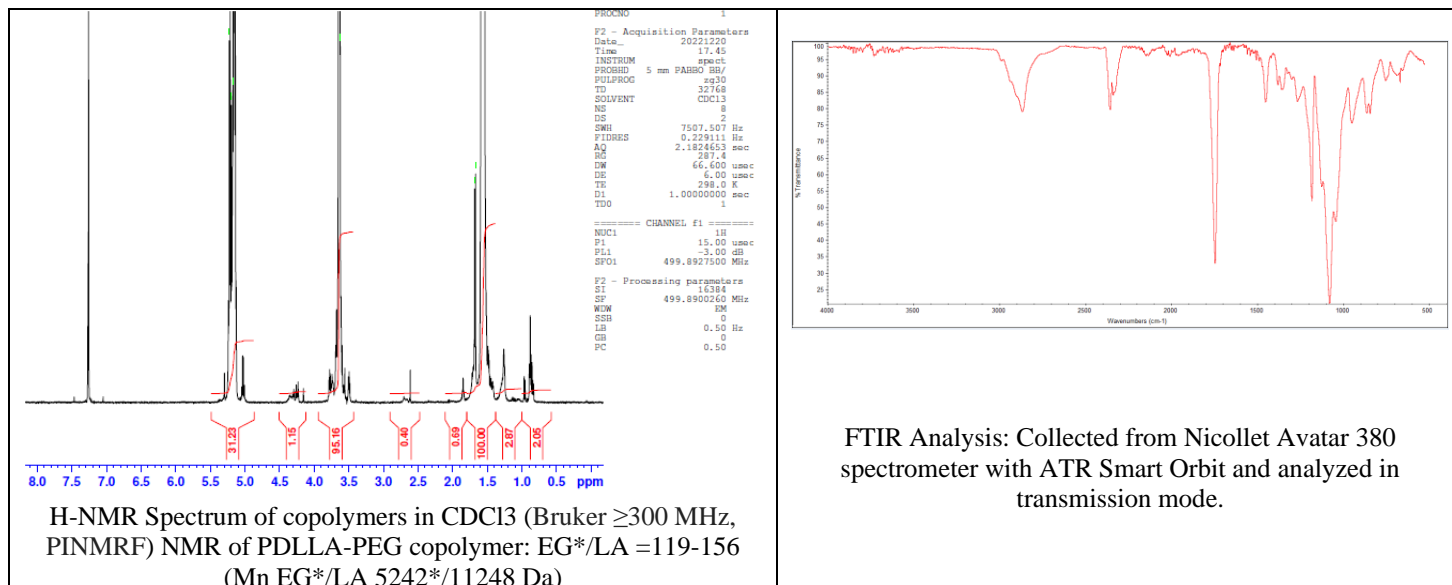


# No. AI223

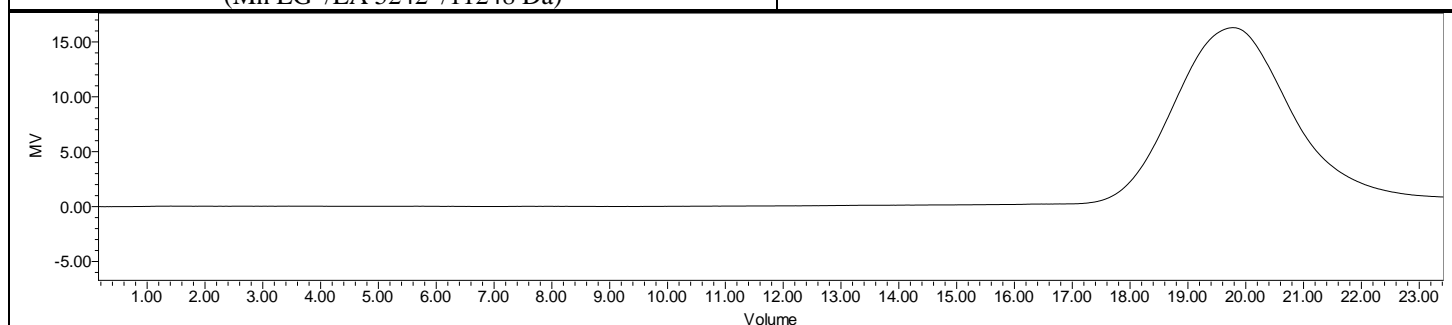
# Certificate of Analysis



Product Name: Poly((D,L)lactide)-b-Poly(ethylene glycol)- carboxylic acid copolymers (10,000 Da – 5000 Da ) (Lot#: 221215RAI-A)



FTIR Analysis: Collected from Nicolet Avator 380 spectrometer with ATR Smart Orbit and analyzed in transmission mode.



GPC-ES Analysis Method: Waters Breeze 2 system with 1 ml/min THF flow across three GPC columns. Detection via refractive index, calibrated against polystyrene standards.

Polymer	M <sub>n</sub> (from GPC)	M <sub>w</sub> (from GPC)	PDI
PDLLA-PEG-COOH	23,006	32,859	1.43
PEG-precursor*		5258*	

\*- from MFG data

## • Structure of P(D,L)La-PEG-COOH copolymers

