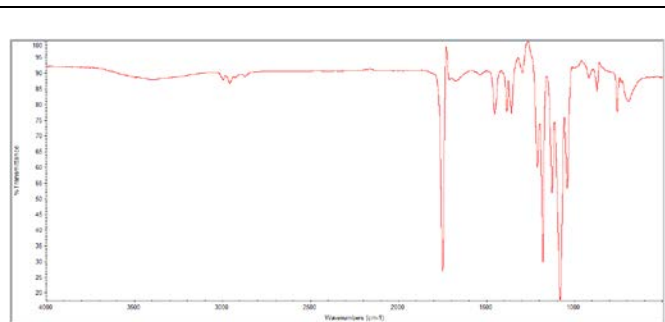
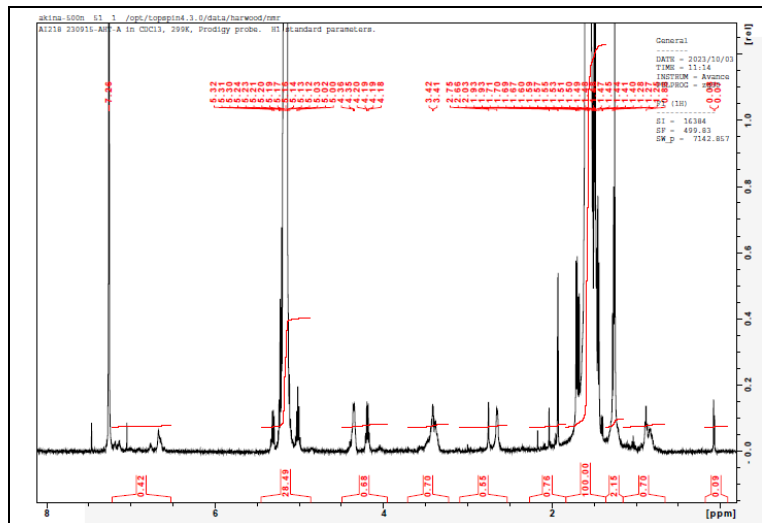


No. AI218

Certificate of Analysis

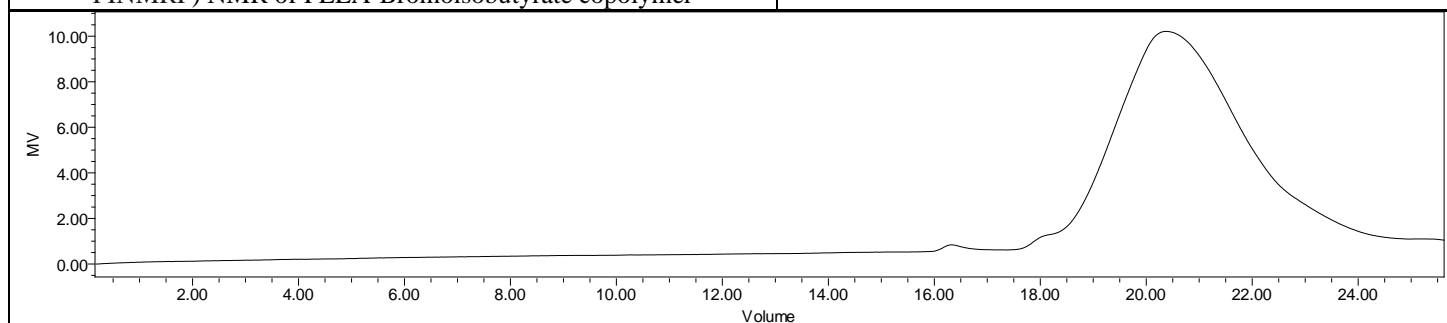


Product Name: Poly(L-Lactide)-co-Bromoisobutamide (Mn 10,000-20,000 Da)
Lot# 230915AHT-A



FTIR Analysis: Collected from IS5 ID7-ATR spectrometer (ThermoFisher) and analyzed in transmission mode.

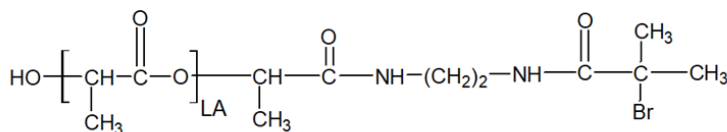
H-NMR Spectrum of copolymers in CDCl₃ (Bruker ≥300 MHz, PINMRF) NMR of PLLA-Bromoisobutyrate copolymer



GPC-ES Analysis Method: Waters Breeze 2 system with 1 ml/min THF flow across three GPC columns. Detection via refractive index, calibrated against polystyrene standards.

Polymer	M _n (from GPC)	M _w (from GPC)	PDI
PLLA-Bromoisobutyrate	10,684	19,617	1.84

• Structure of PLA-Bromoisobutyrate



Approved By:
Amie Tyler
Quality Manager