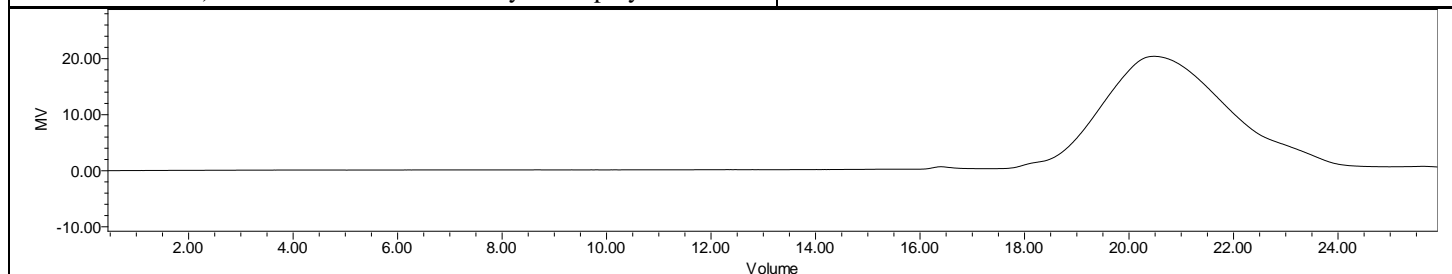
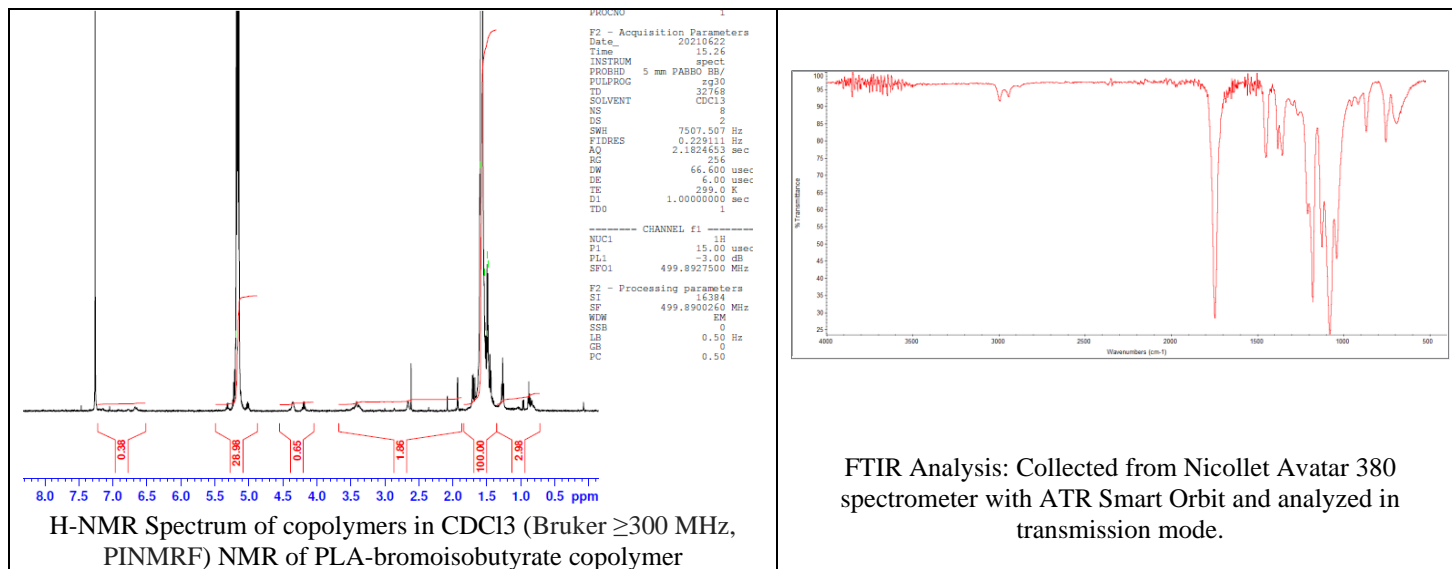


# No. AI218

# Certificate of Analysis



Product Name: Poly(L-Lactide)-co-Bromoisobutamide  
(Mn 10,000-20,000 Da) Lot # 210611JSG-A



GPC Analysis Method: Waters Breeze 2 system with 1 ml/min THF flow across three GPC columns. Detection via refractive index, calibrated against polystyrene standards.

Polymer	M <sub>n</sub> (from GPC)	M <sub>w</sub> (from GPC)	PDI
PLA-Bromoisobutyrate	12,174	20,487	1.66

## Structure of PLA-Bromoisobutyrate

