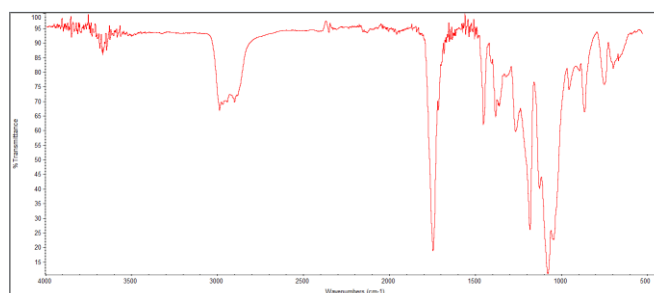
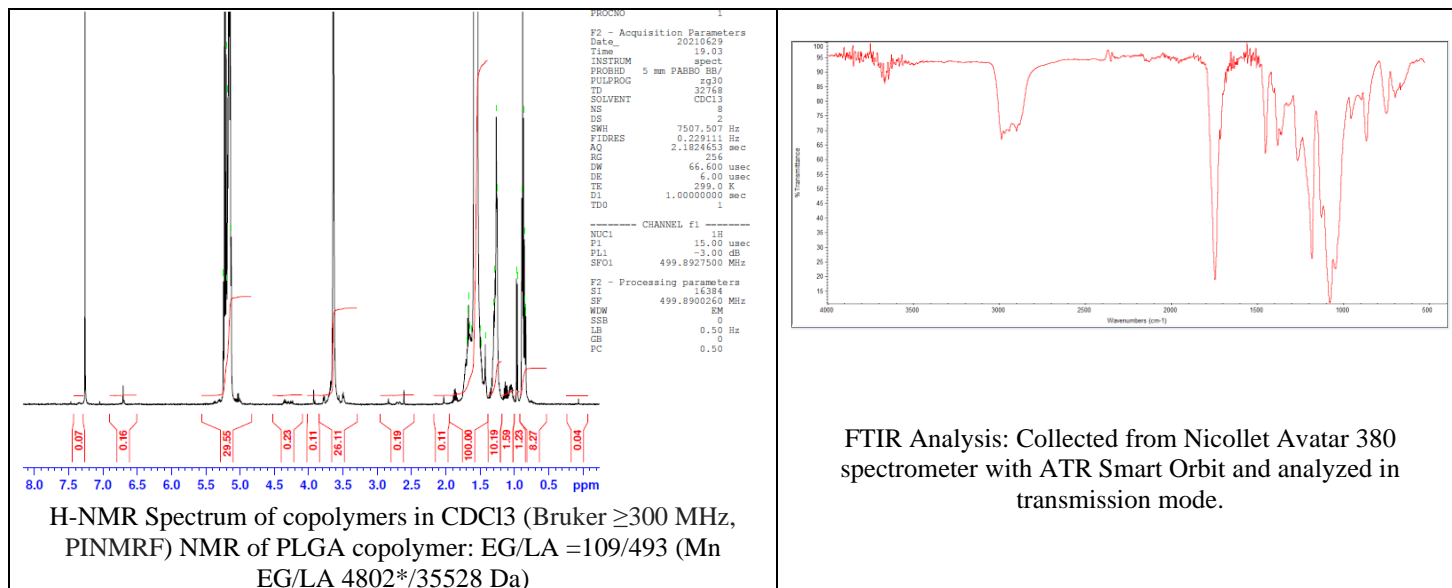


No. AI212

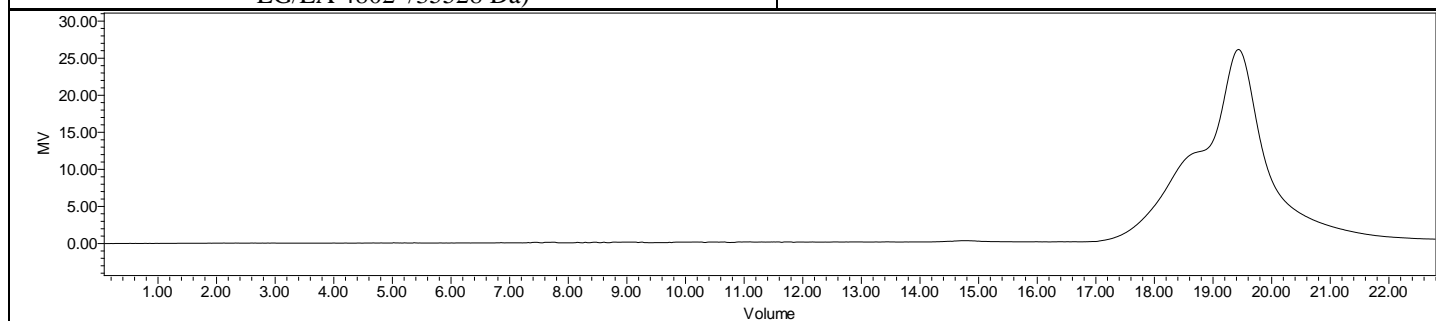
Certificate of Analysis



Product Name: Maleimide-Poly(ethylene glycol)-b-Poly(D,L-lactide)
(MW 5,000:35,000 Da) (Lot#: 210625RAI-B)



FTIR Analysis: Collected from Nicolet Avator 380 spectrometer with ATR Smart Orbit and analyzed in transmission mode.



GPC Analysis Method: Waters Breeze 2 system with 1 ml/min THF flow across three GPC columns. Detection via refractive index, calibrated against polystyrene standards.

Polymer	M _n (from GPC)	M _w (from GPC)	PDI
Mal-PEG_PDLLA	39,409	47,912	1.22
PEG Precursor*		4800*	

*- from MFG data

Structure of Mal-PEG-PDLLA copolymers

