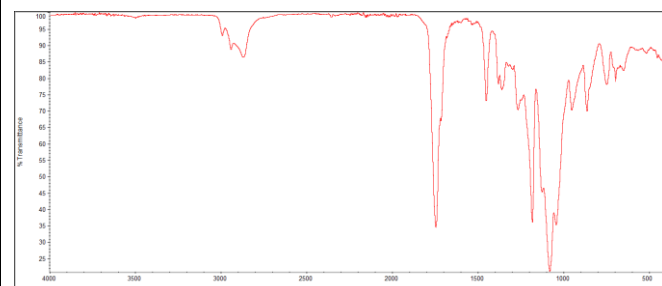
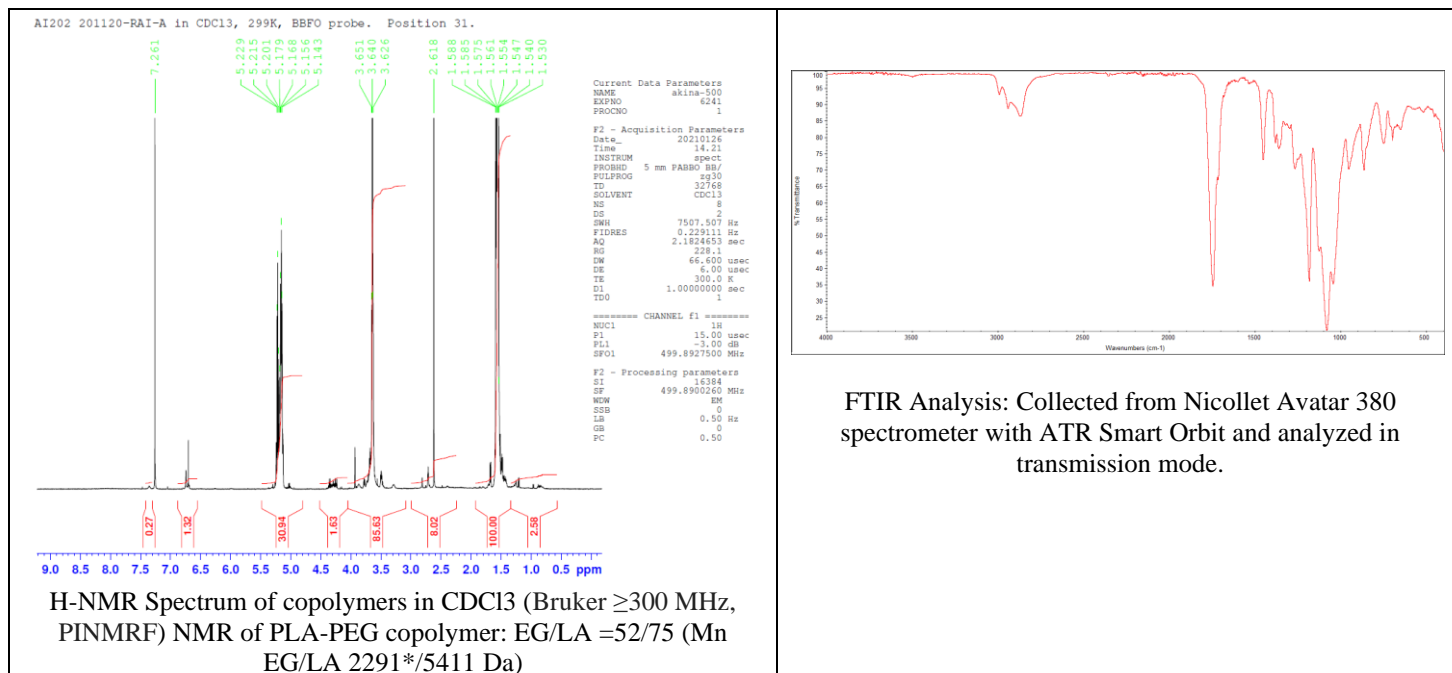


# No. AI202

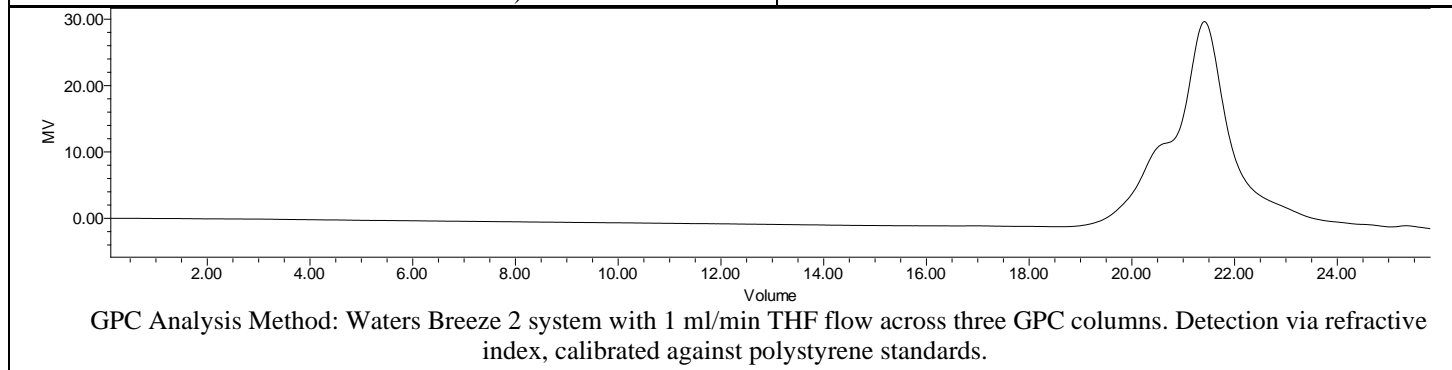
# Certificate of Analysis



Product Name: Poly(DL-Lactide)-b-Poly(ethylene glycol)-Maleimide  
(Mw ~ 5,000-2,000 Da) Lot# 201120RAI-AR



FTIR Analysis: Collected from Nicolet Avator 380 spectrometer with ATR Smart Orbit and analyzed in transmission mode.



Polymer	M <sub>n</sub> (from GPC)	M <sub>w</sub> (from GPC)	PDI
PLA-PEG	9841	12,417	1.26
PEG-precursor		2300*	

\*- from MFG data

## Structure of P(DL)LA-PEG-Maleimide

