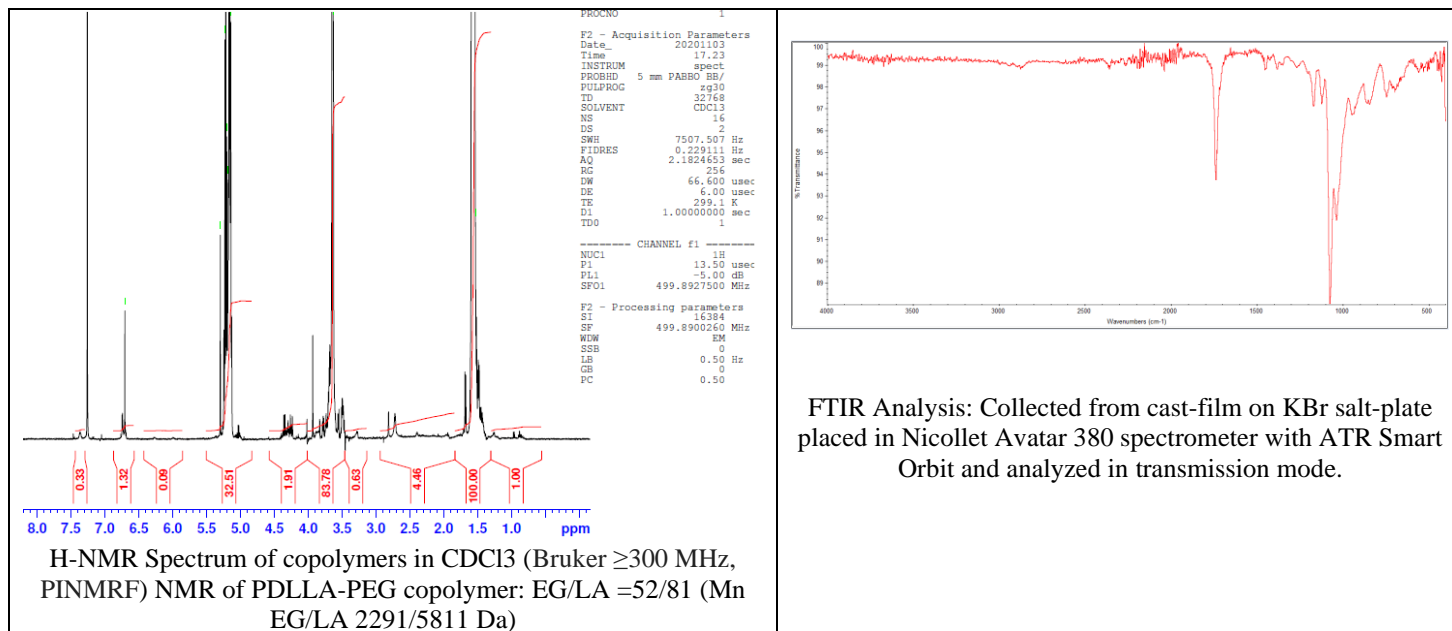


No. AI202

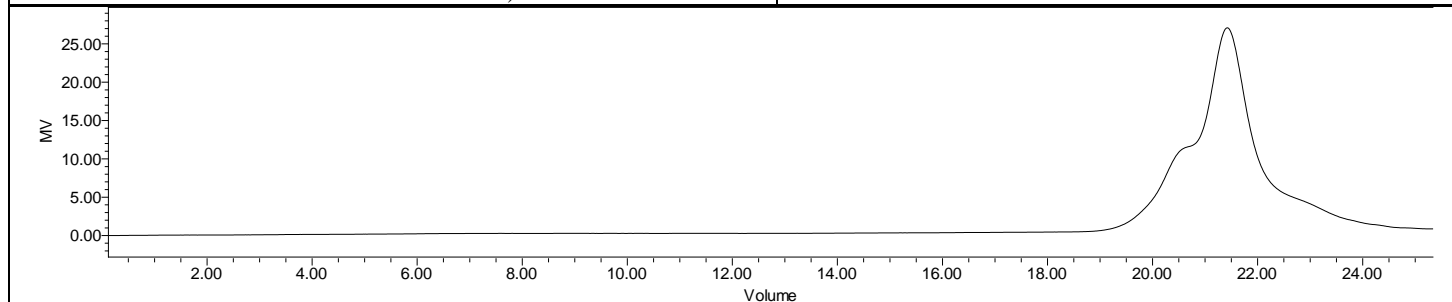
Certificate of Analysis



Product Name: Poly(DL-Lactide)-b-Poly(ethylene glycol)-Maleimide
(Mw ~ 5,000-2,000 Da) Lot# 201021RAI-A



FTIR Analysis: Collected from cast-film on KBr salt-plate placed in Nicolet Avatar 380 spectrometer with ATR Smart Orbit and analyzed in transmission mode.



Polymer	M _n (from GPC)	M _w (from GPC)	PDI
P(DL)LA-PEG	9405	12,182	1.30
PEG-Precursor	2300*		

*- from MFG data

• Structure of P(DL)LA-PEG-Maleimide

