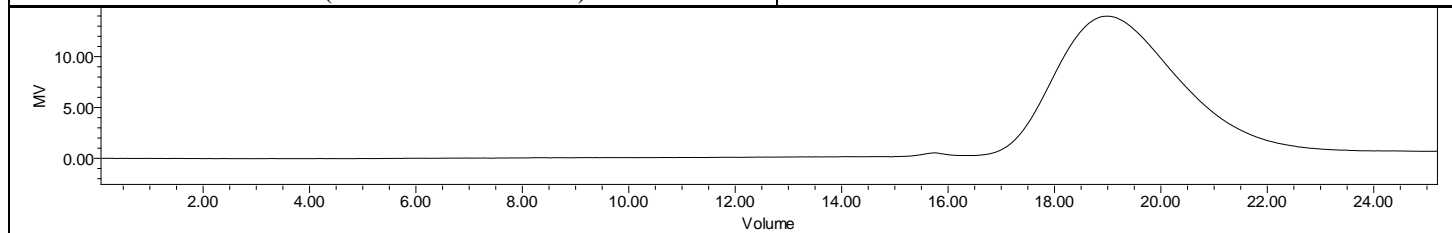
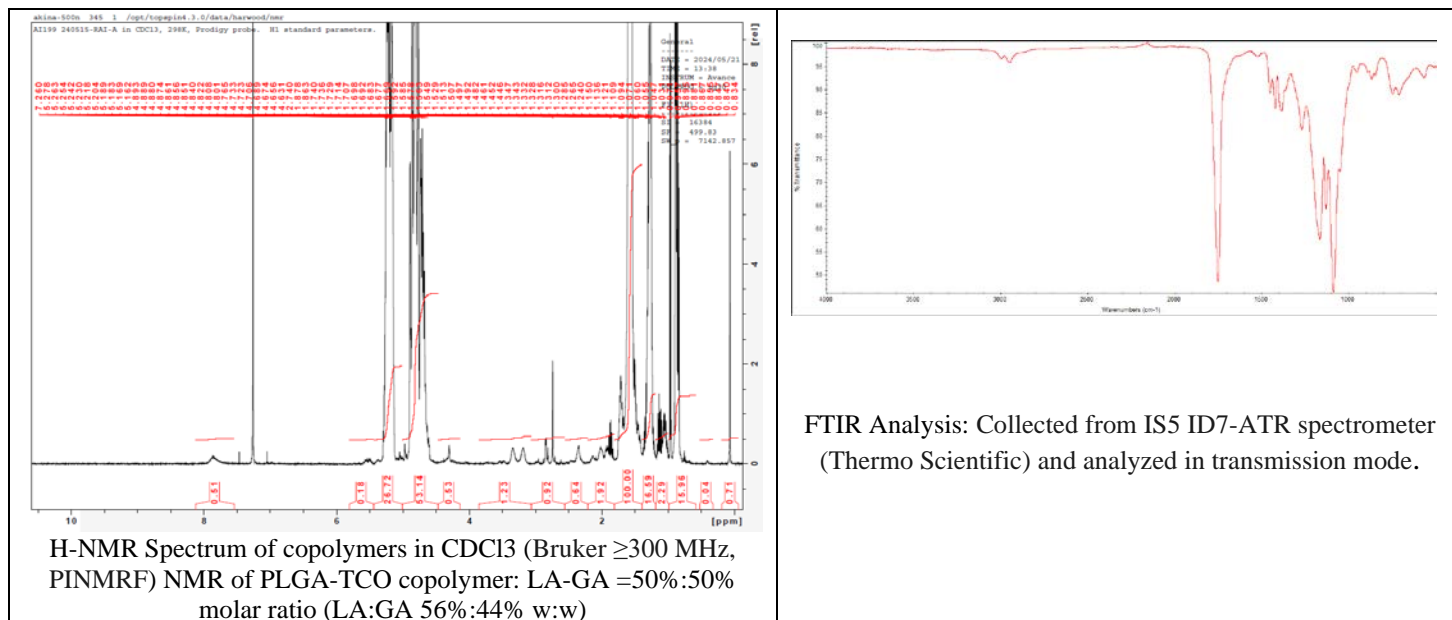


No. AI199

Certificate of Analysis



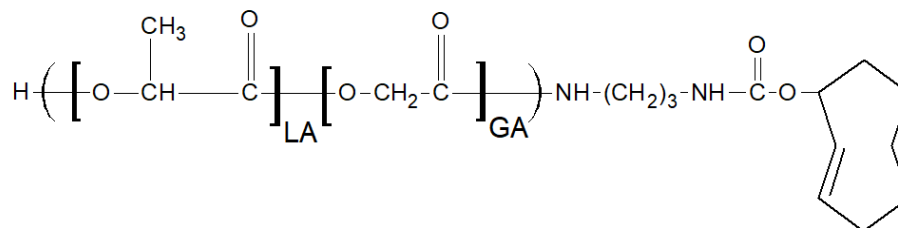
Product Name: Poly(lactide-co-glycolide)-Transcyclooctene endcap
(50:50 LA:GA, M_n : 25,000-35,000 Da) (Lot#: 240515RAI-A)



GPC-ES Analysis Method: Waters Breeze 2 system with 1 ml/min THF flow across three GPC columns. Detection via refractive index, calibrated against polystyrene standards.

Polymer	M_n (from GPC)	M_w (from GPC)	PDI
PLGA-TCO	33,601	51,033	1.52

- Structure of PLGA-TCO copolymer**



Approved By:
Amie Tyler
Quality Manager