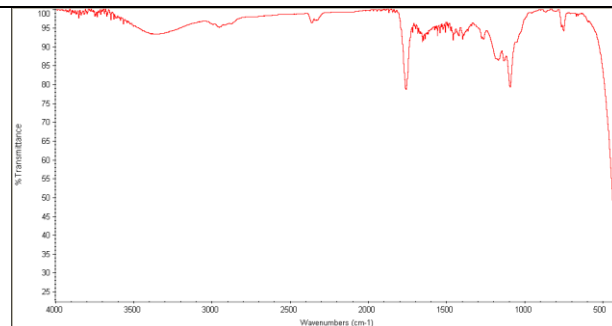
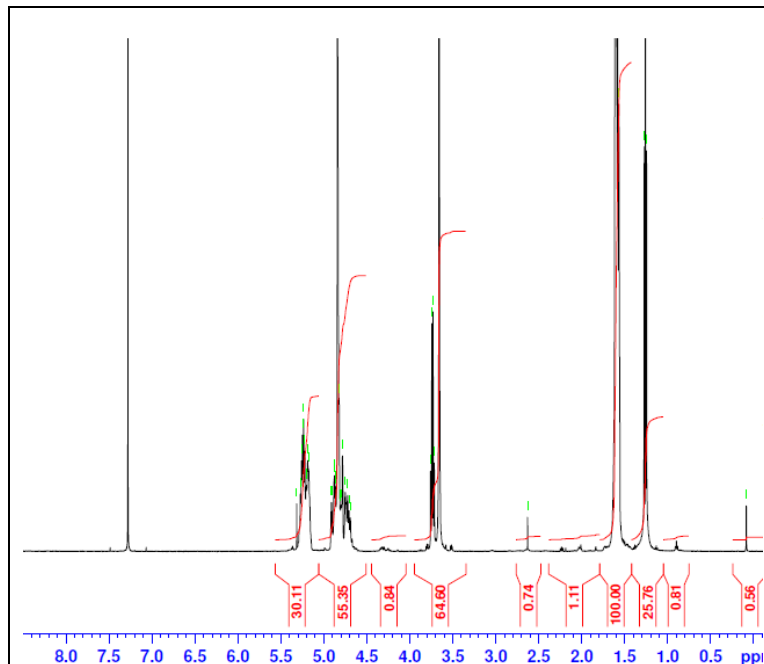


No. AI189

Certificate of Analysis

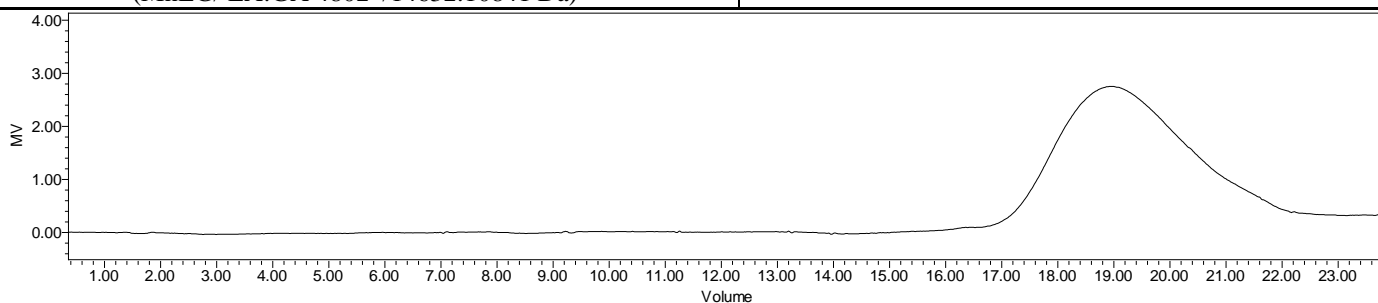


Product Name: Poly(lactide-co-glycolide)-b-Poly(ethylene glycol)-Amine copolymers
(Mw ~ 30,000:5000Da) (Lot#: 191112RAI-A)



FTIR Analysis: Collected from cast-film on KBr salt-plate placed in Nicolet Avatar 320 spectrometer and analyzed in transmission mode.

H-NMR Spectrum of copolymers in CDCl₃ (Bruker ≥300 MHz, PINMRF) NMR of PLGA copolymer: EG/LA-GA =109/203-187 (MnEG/ LA:GA 4802*/14632:10841 Da)



GPC Analysis Method: Waters Breeze 2 system with 1 ml/min THF flow across three GPC columns. Detection via refractive index, calibrated against polystyrene standards.

Polymer	M _n (from GPC)	M _w (from GPC)	PDI
PLGA-PEG	38,598	52,585	1.36
PEG-Precursor*	4800*		

*- from MFG data

• Structure of PLGA-PEG-NH₂ copolymers:

