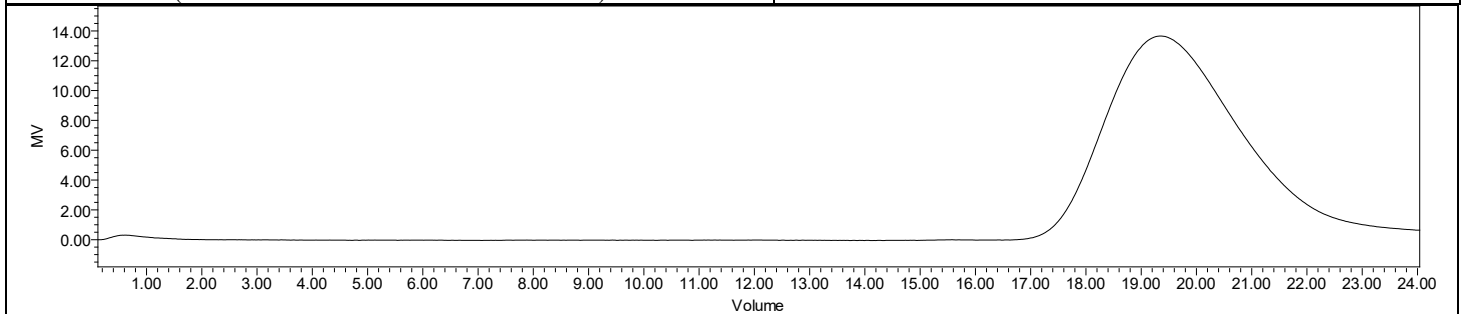
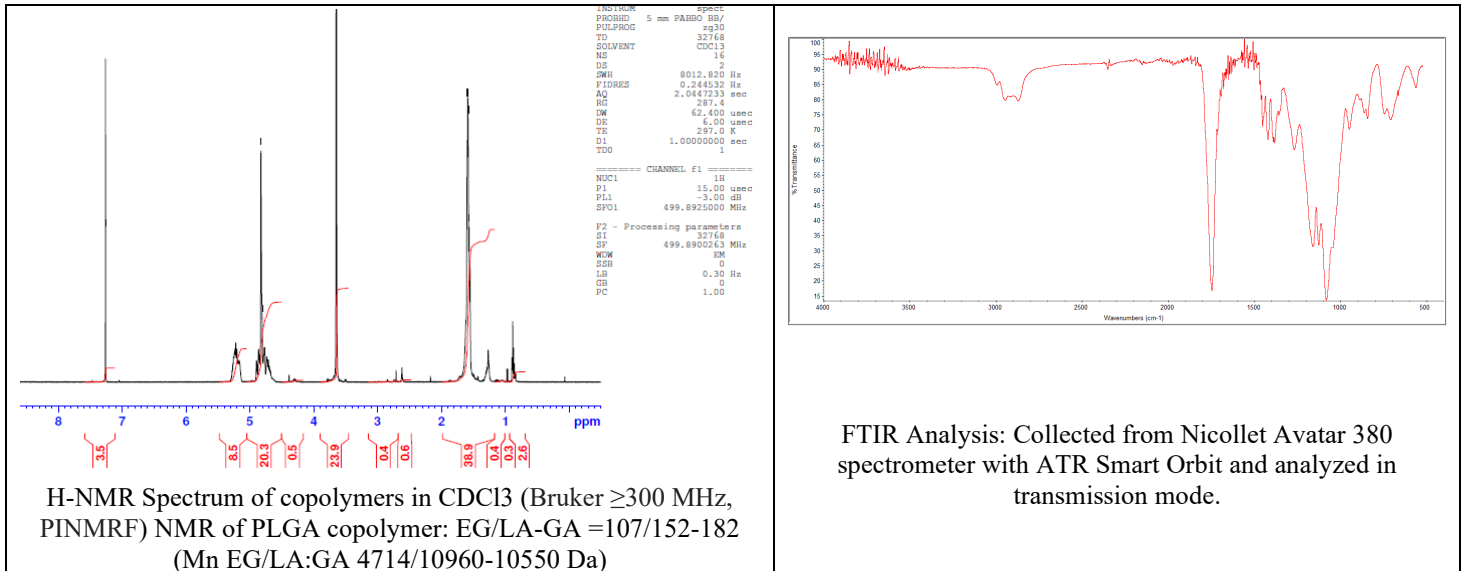


No. AI188

Certificate of Analysis



Product Name: Poly(lactide-co-glycolide)-b-Poly(ethylene glycol)-Amine copolymers (Mw ~ 20,000:5000Da) (Lot#: 220914RAI-A)



GPC-ES Analysis Method: Waters Breeze 2 system with 1 ml/min THF flow across three GPC columns. Detection via refractive index, calibrated against polystyrene standards.

Polymer	M _n (from GPC)	M _w (from GPC)	PDI
PLGA-PEG-NH ₂	26,976	40,918	1.52
PEG-Precursor*		4700*	

*- from MFG data

Structure of PLGA-PEG-NH₂ copolymers:

