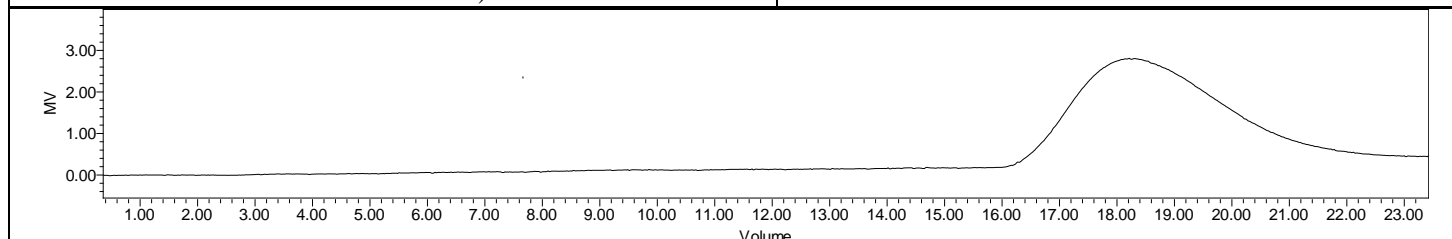
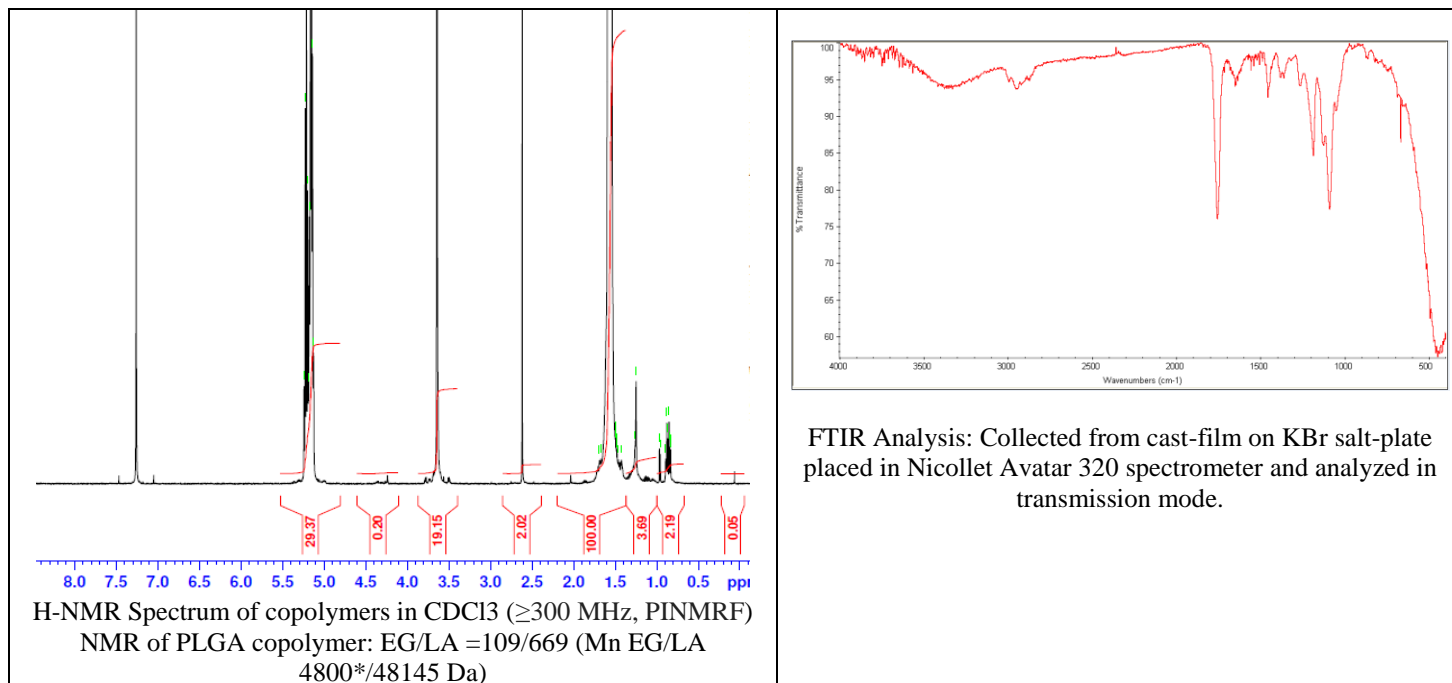


No. AI187

Certificate of Analysis



Product Name: Poly(D,L-Lactide)-b-Poly(ethylene glycol)-Carboxylic acid copolymers (Mn 50,000-5,000Da) (Lot# 190911RAI-A)



GPC Analysis Method: Waters Breeze 2 system with 1 ml/min THF flow across three GPC columns. Detection via refractive index, calibrated against polystyrene standards.

Polymer	M _n (from GPC)	M _w (from GPC)	PDI
PLGA	54,467	81,447	1.49
PEG-Precursor		4800*	

*- from MFG data

- Structure of PLGA-PEG-COOH copolymers

