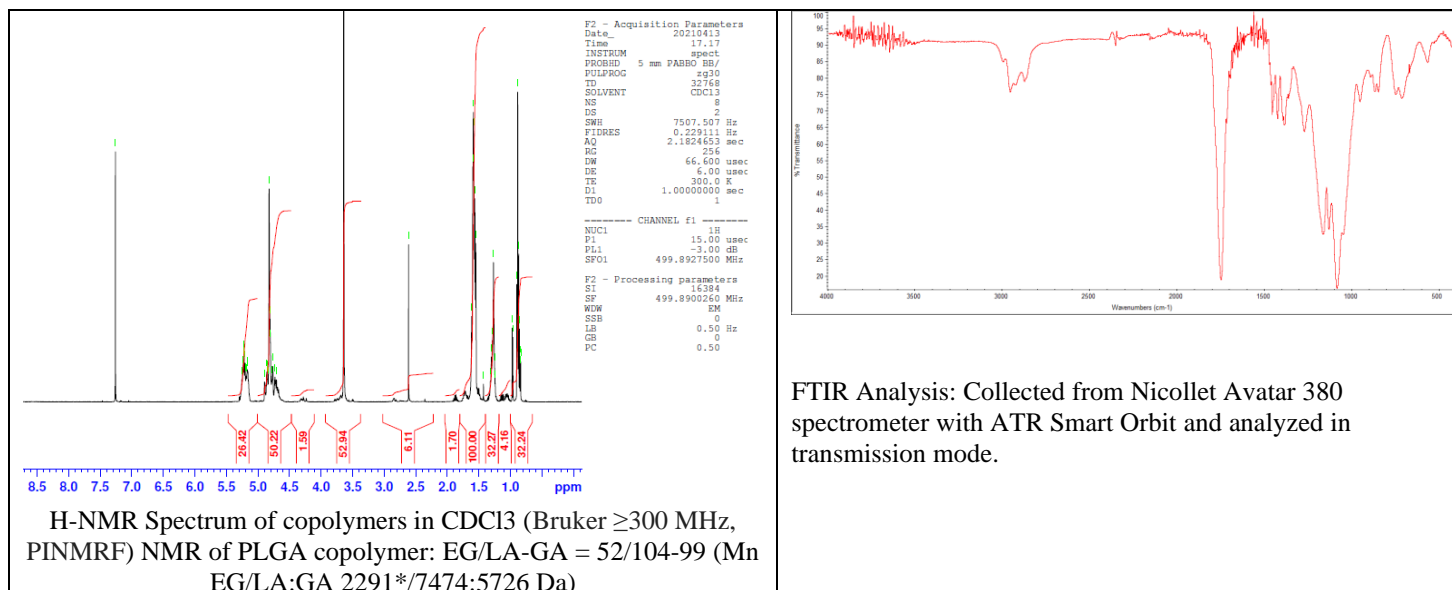


No. AI183

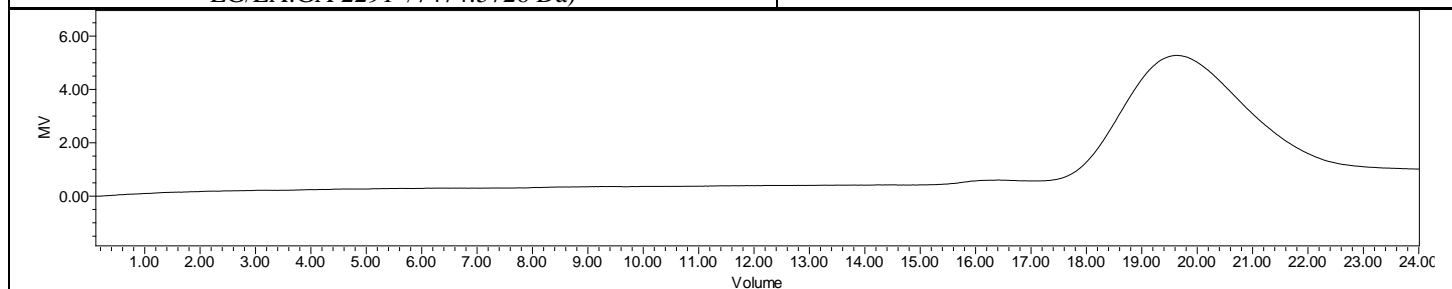
Certificate of Analysis



Product Name: Poly(lactide-co-glycolide)-b-Poly(ethylene glycol)-Amine
(succinic acid dihydrazide) copolymers (Mw ~ 10,000:2000Da) (Lot#: 210405RAI-A)



FTIR Analysis: Collected from Nicolet Avatar 380 spectrometer with ATR Smart Orbit and analyzed in transmission mode.



GPC Analysis Method: Waters Breeze 2 system with 1 ml/min THF flow across three GPC columns. Detection via refractive index, calibrated against polystyrene standards.

Polymer	M _n (from GPC)	M _w (from GPC)	PDI
PLGA-PEG	24,288	35,106	1.45
PEG-precursor*		2300*	

*- from MFG data

Structure of PLGA-PEG-NH₂ copolymers:

