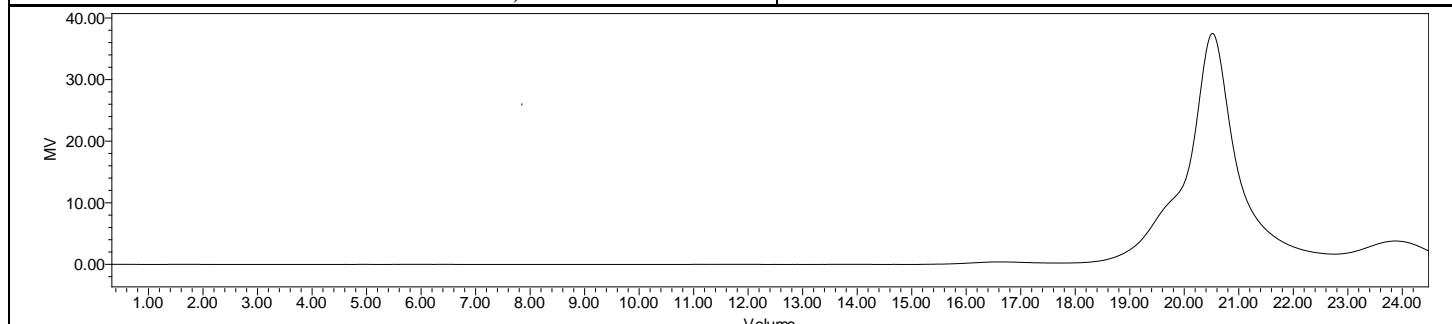
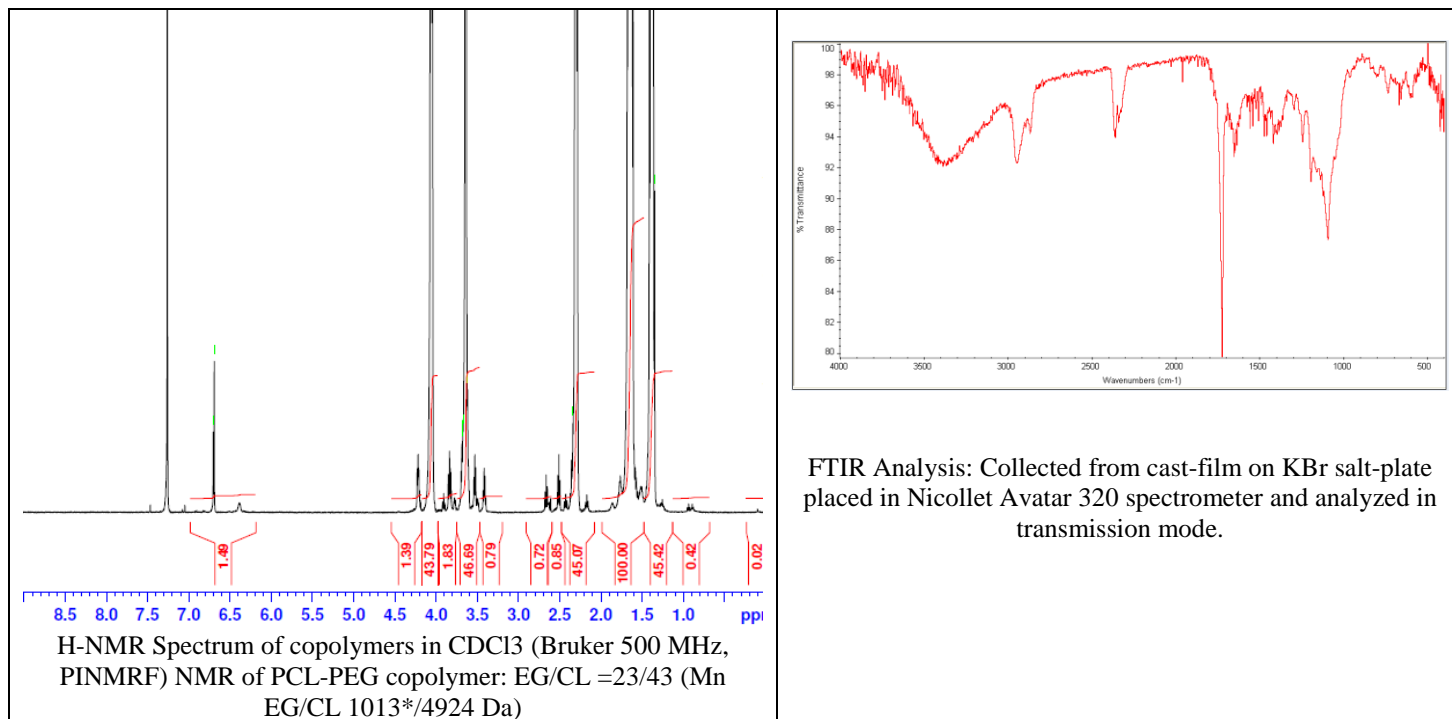


No. AI180

Certificate of Analysis



Product Name: Polycaprolactone-Poly(ethylene glycol)-b-Maleimide
(Mn 5,000-1,000 Da) Lot# 190517RAI-A



GPC Analysis Method: Waters Breeze 2 system with 1 ml/min THF flow across three GPC columns. Detection via refractive index, calibrated against polystyrene standards.

Polymer	M _n (from GPC)	M _w (from GPC)	PDI
PLGA-PEG	16,304	19,245	1.18
PEG precursor*	1024*		

*- from MFG data

• Structure of PCL-PEG-Mal copolymers

