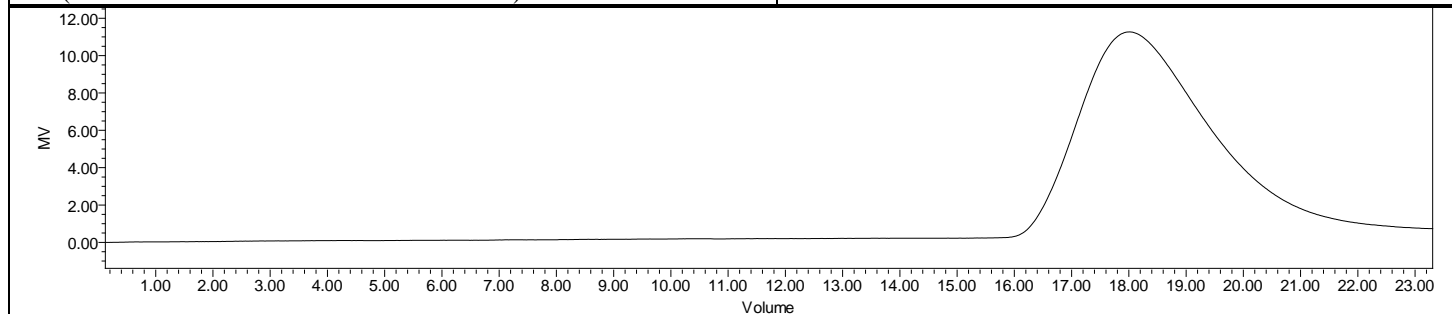
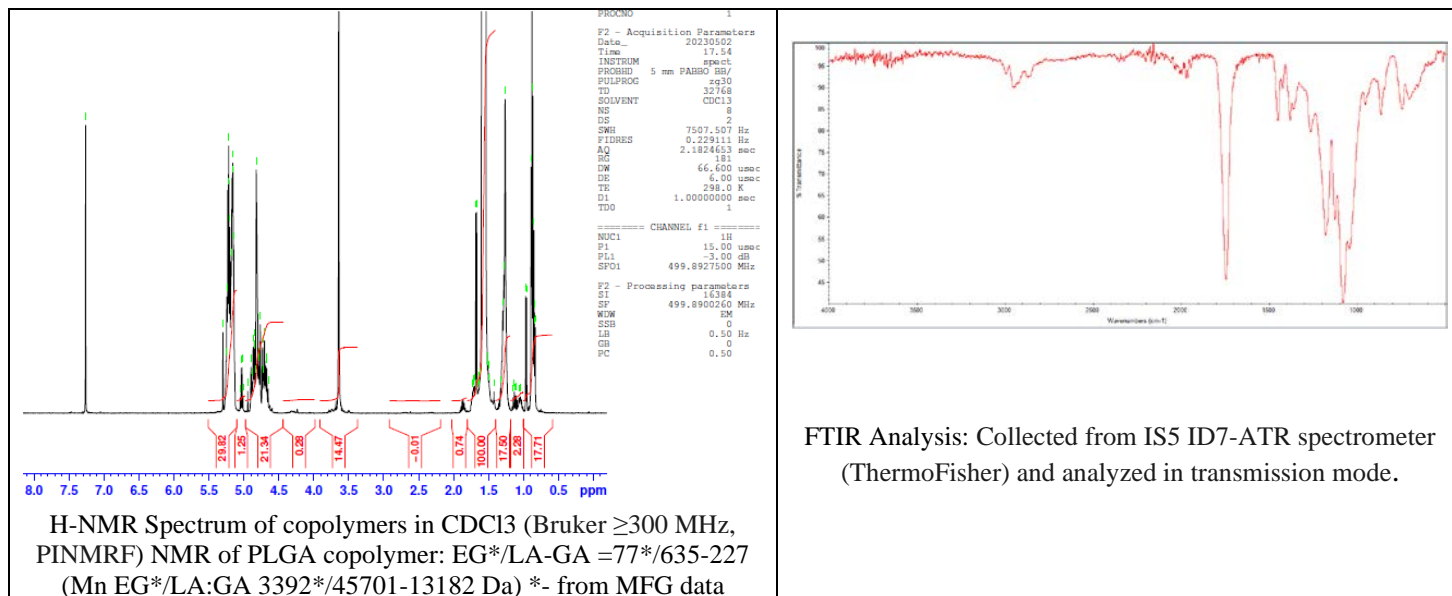


No. AI176

Certificate of Analysis



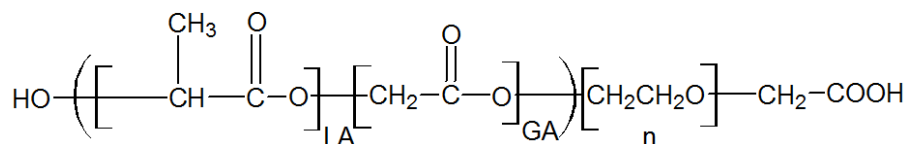
Product Name: Poly(lactide-co-glycolide)-b-Poly(ethylene glycol)-carboxylic acid endcap (Mn~60,000 Da-3,400 Da) (Lot# 230420RAI-B)



Polymer	M _n (from GPC)	M _w (from GPC)	PDI
PLGA-PEG-COOH	58,681	91,450	1.56
PEG-Precursor*		3400*	

*- from MFG data

Structure of PLGA-PEG-COOH copolymers



Approved By:
Amie Tyler
Quality Manager