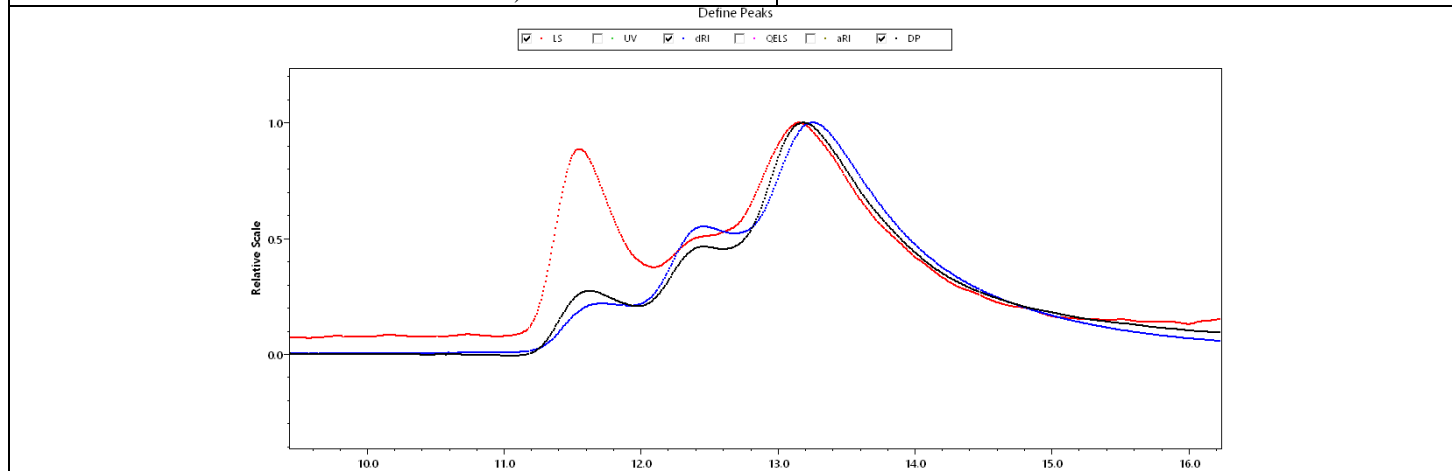
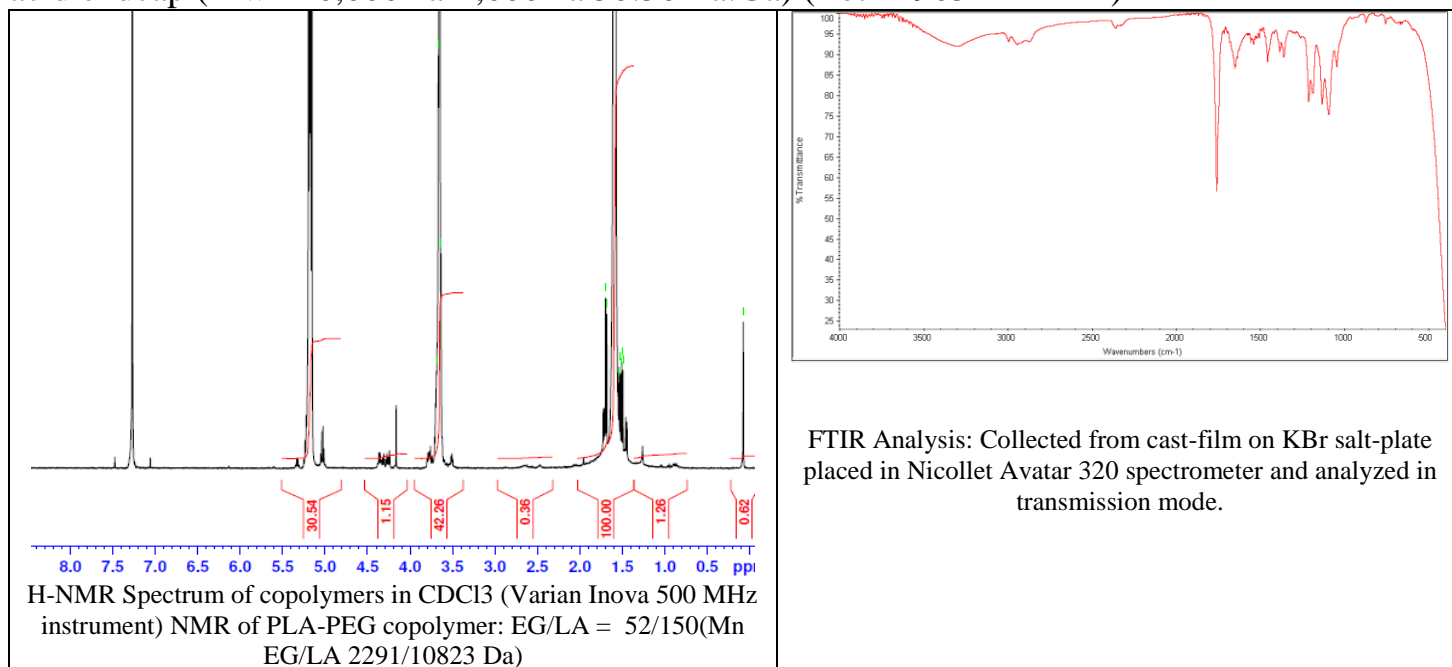


No. AI175

Certificate of Analysis



Product Name: Poly(L-Lactide)-b-Poly(ethylene glycol)-carboxylic acid endcap (Mw ~10,000Da-2,000Da 50:50 La:Ga) (Lot# 190321RAI-A)



GPC Analysis Method: Agilent 1260 Infinity II HPLC connected to Dawn Heleos II (MALLS), Optilab T-rEX (RI detector) and Viscostar III viscometer operated by Astra 7 software. GPC analysis performed with separation by a linear gradient column (TosohBioscience LLC, TSKgel GMHHR-L, 7.8 mm x 30 cm) at 0.6 ml/min flow of Acetone.

Polymer	M _n (from GPC)	M _w (from GPC)	PDI
PLLA-PEG-COOH	17,830	20,960	1.18
PEG precursor	2300*		

*- from MFG data

Structure of PLLA-PEG-COOH copolymers

