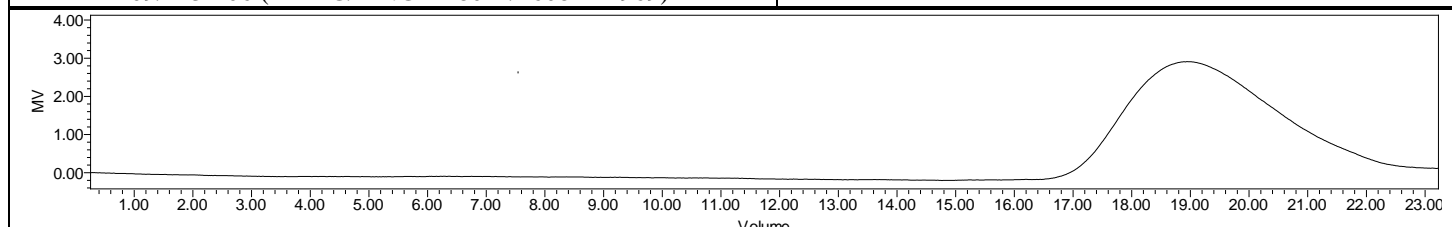
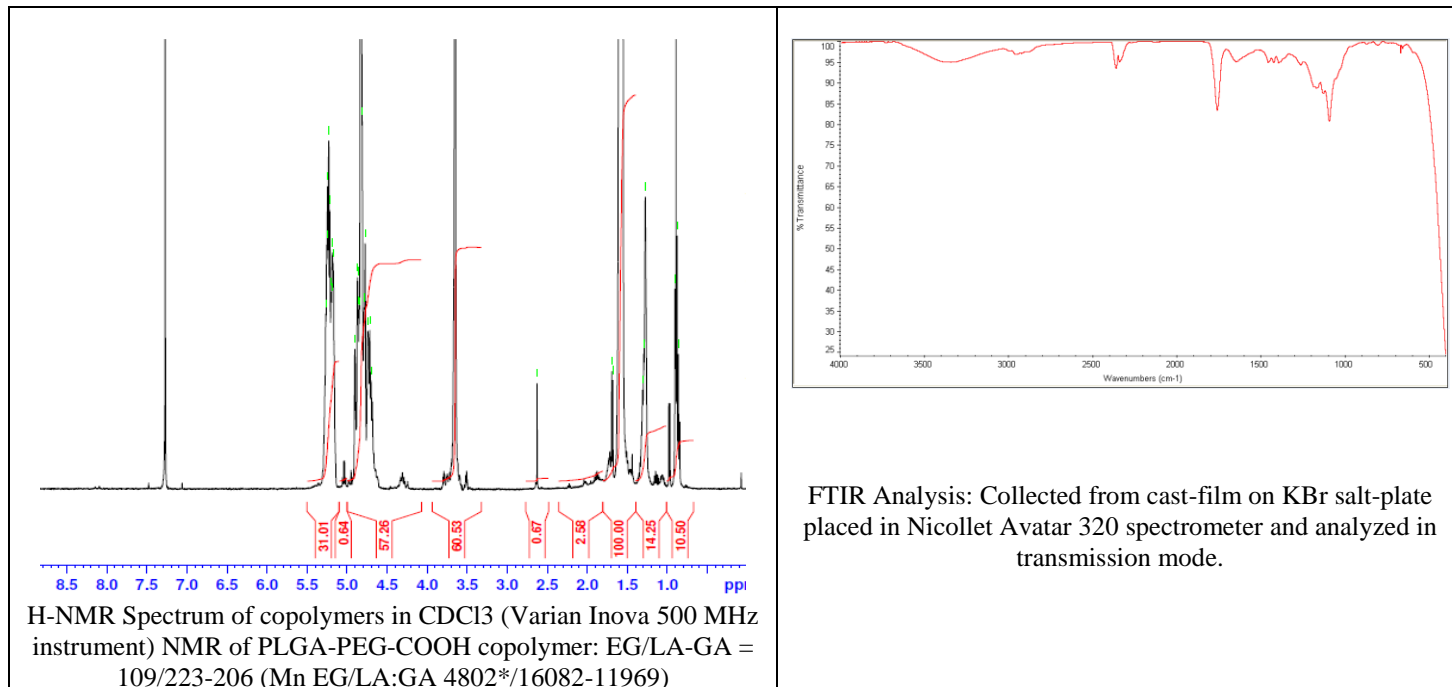


No. AI171

# Certificate of Analysis



Product Name: Poly(lactide-co-glycolide)-b-Poly(ethylene glycol)-carboxylic acid endcap (Mn~30,000 Da-5,000 Da) (Lot#: 190416BGR-A)



GPC Analysis Method: Waters Breeze 2 system with 1 ml/min THF flow across three GPC columns. Detection via refractive index, calibrated against polystyrene standards.

Polymer	M <sub>n</sub> (from GPC)	M <sub>w</sub> (from GPC)	PDI
PLGA-PEG-COOH	35,189	52,085	1.48
PEG-Precursor		4800*	

\*- from MFG data

- Structure of PLGA-PEG-COOH copolymers

