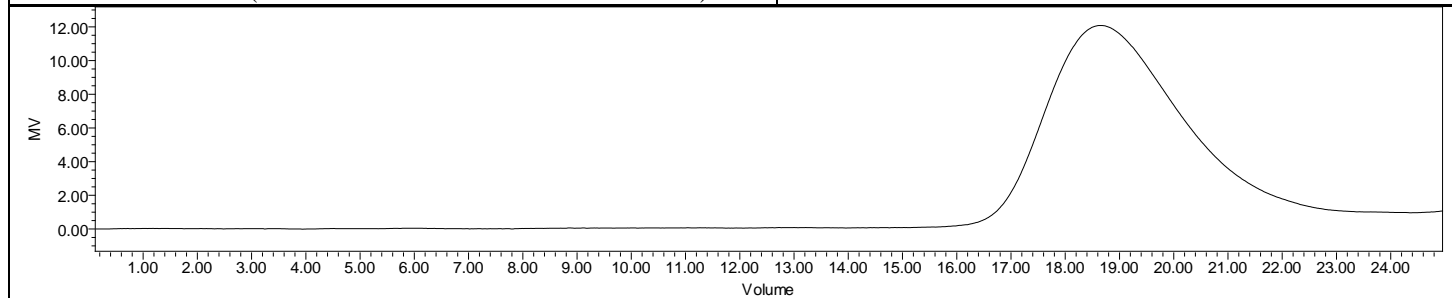
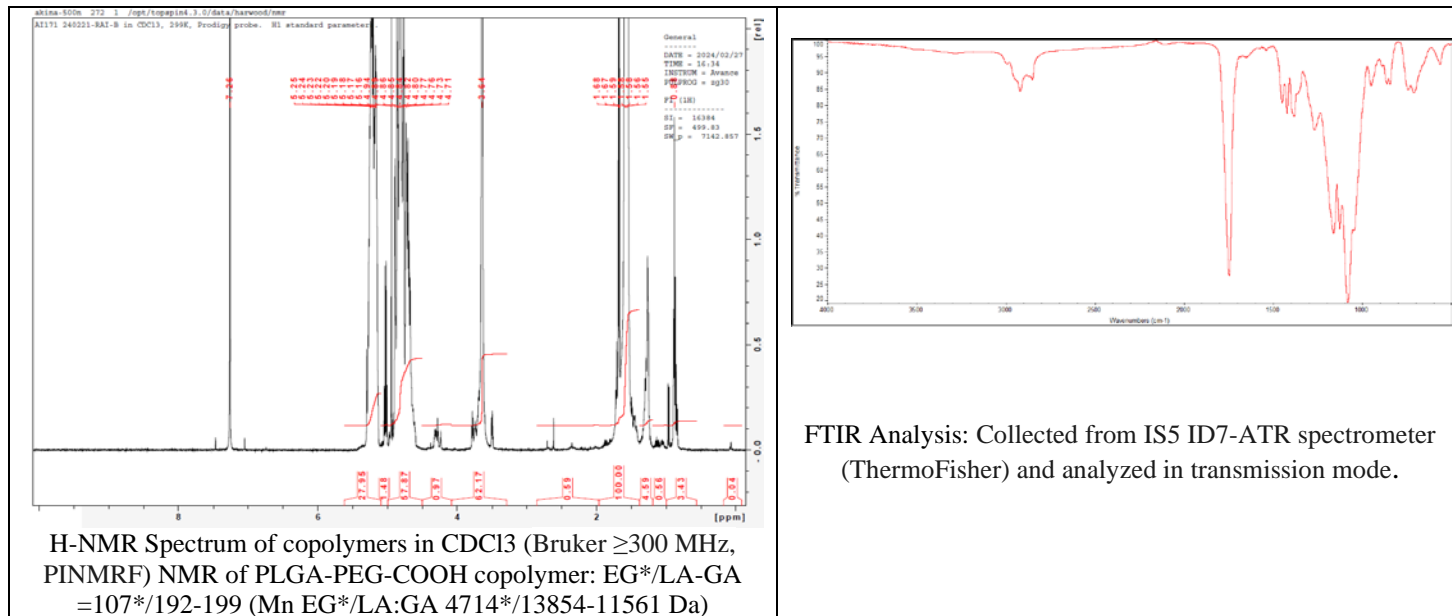


# No. AI171

# Certificate of Analysis



Product Name: Poly(lactide-co-glycolide)-b-Poly(ethylene glycol)-carboxylic acid endcap (Mw ~ 30,000:5,000 Da) (Lot#: 240221RAI-A)

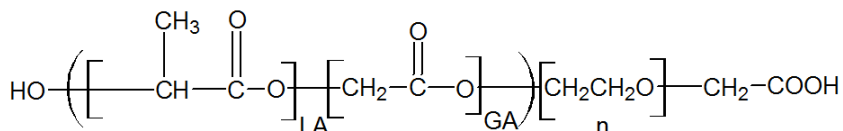


GPC-ES Analysis Method: Waters Breeze 2 system with 1 ml/min THF flow across three GPC columns. Detection via refractive index, calibrated against polystyrene standards.

Polymer	M <sub>n</sub> (from GPC)	M <sub>w</sub> (from GPC)	PDI
PLGA-PEG-COOH	35,572	61,851	1.74
PEG-Precursor*	M <sub>n</sub> = 4700*		

\*- from MFG data

- Structure of PLGA-PEG-COOH copolymers



Approved By:  
*Amie Tyler*  
Quality Manager