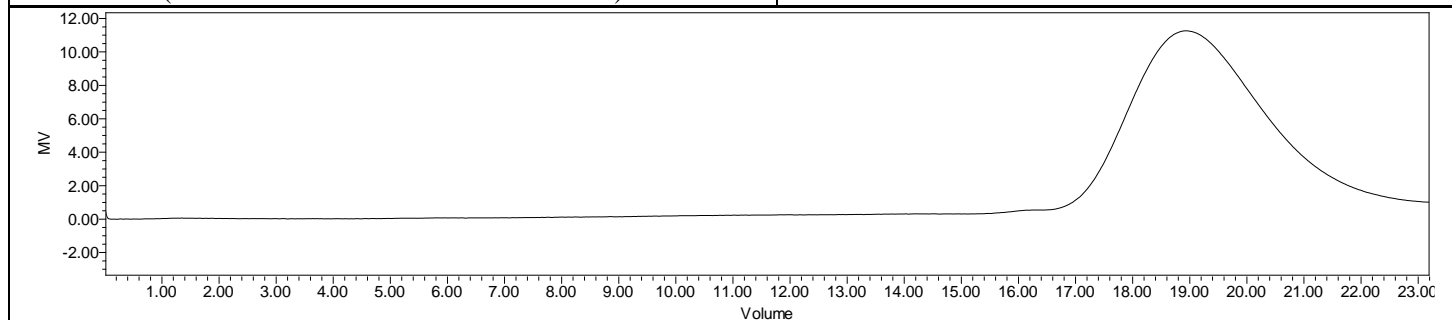
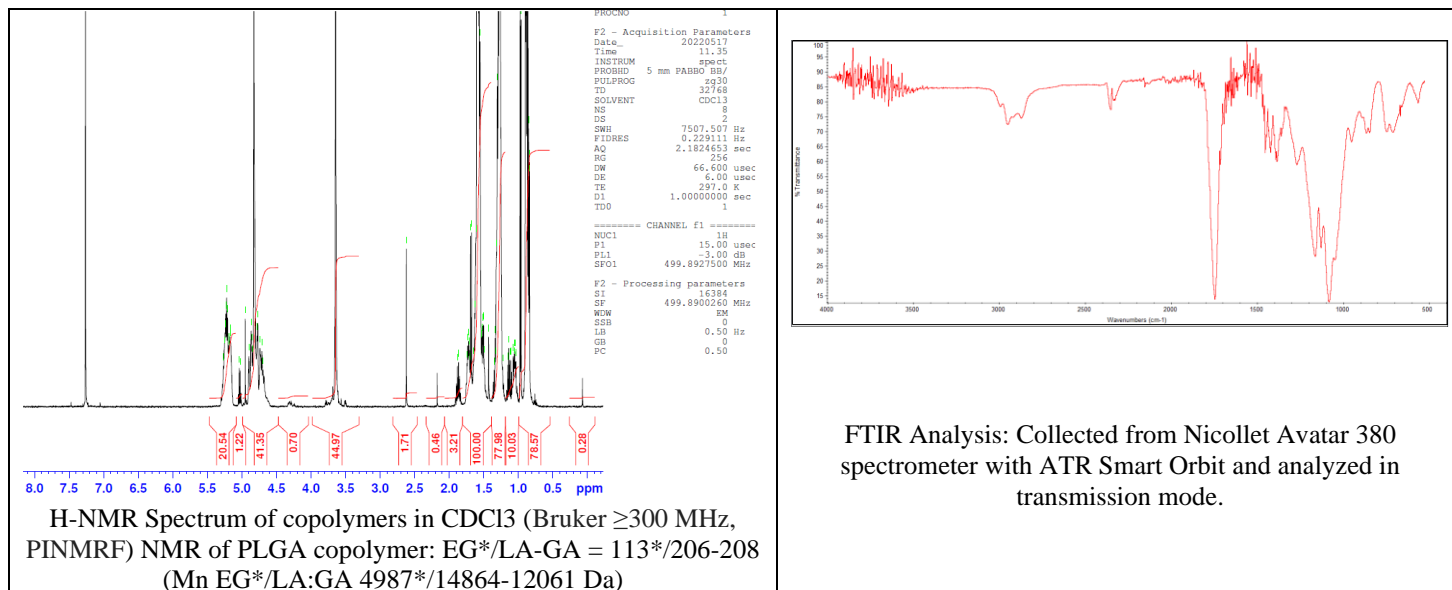


No. AI171

Certificate of Analysis



Product Name: Poly(lactide-co-glycolide)-b-Poly(ethylene glycol)-carboxylic acid endcap (Mw ~ 30,000:5,000 Da) (Lot#: 220512RAI-A)



| Polymer | M _n (from GPC) | M _w (from GPC) | PDI |
|----------------|---------------------------|---------------------------|------|
| PLGA-PEG-COOH | 34,800 | 53,115 | 1.53 |
| PEG precursor* | | 4996* | |

*- from MFG data

Structure of PLGA-PEG-COOH copolymers

