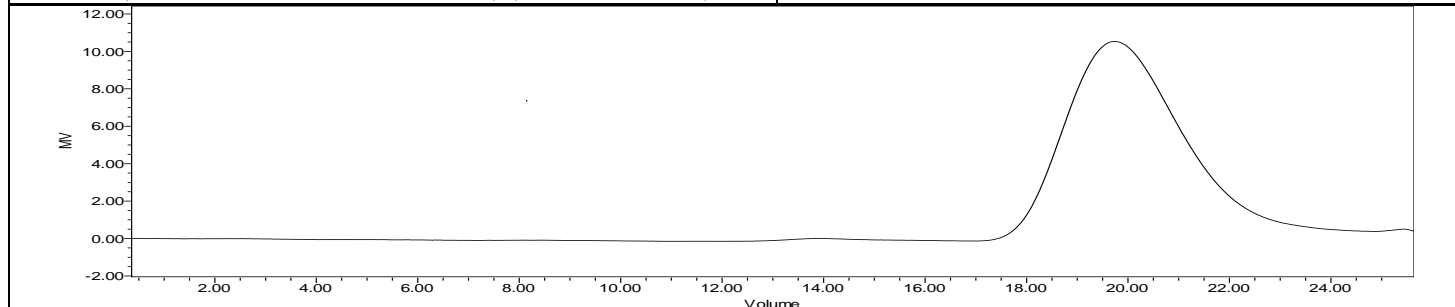
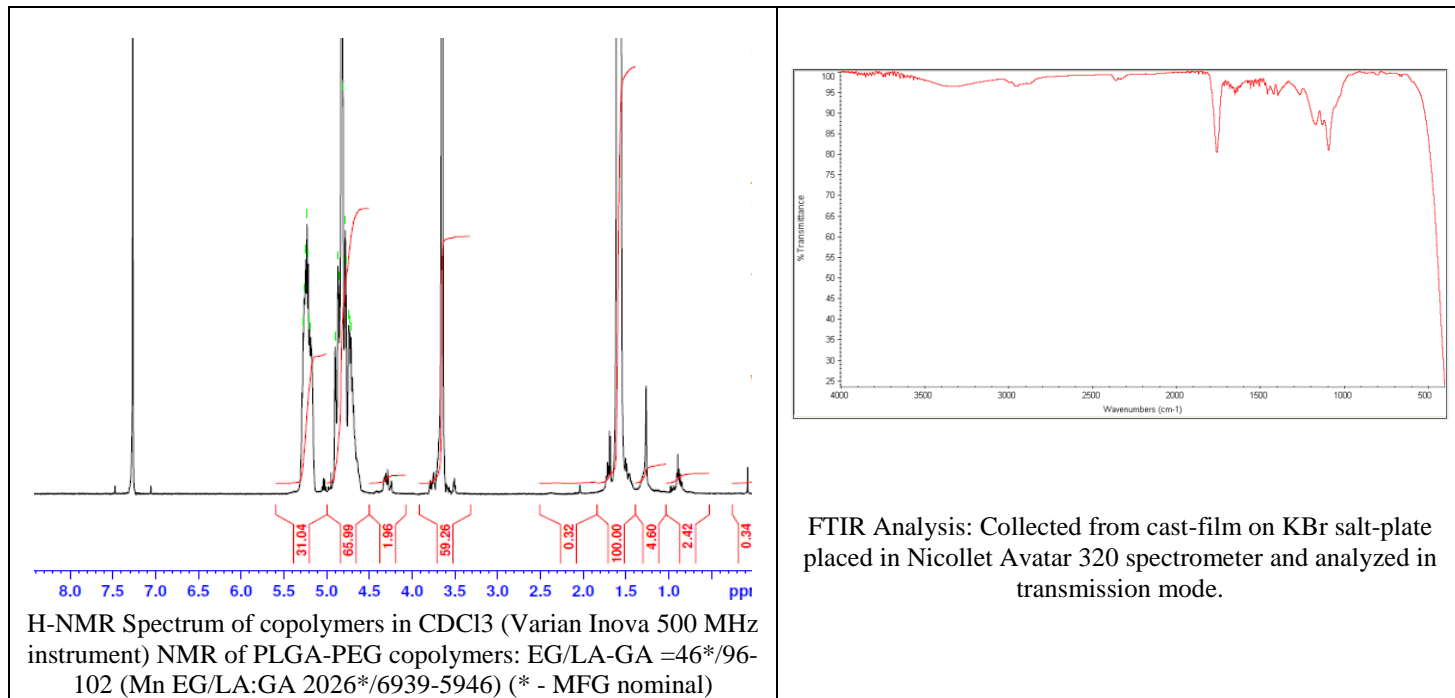


No. AI170

Certificate of Analysis



Product Name: Poly(lactide-co-glycolide)-b-Poly(ethylene glycol)-carboxylic acid endcap (Mw ~12,000Da-2000Da 50:50 La:Ga) (Lot#: 181203RAI-A)



GPC Analysis Method: Waters Breeze 2 system with 1 ml/min THF flow across three GPC columns. Detection via refractive index, calibrated against polystyrene standards.

Polymer	M _n (from GPC)	M _w (from GPC)	PDI
PLGA-PEG	20,970	31,714	1.51
PEG*	2400*		

*- from MFG data

Structure of PLGA-PEG-COOH copolymers

