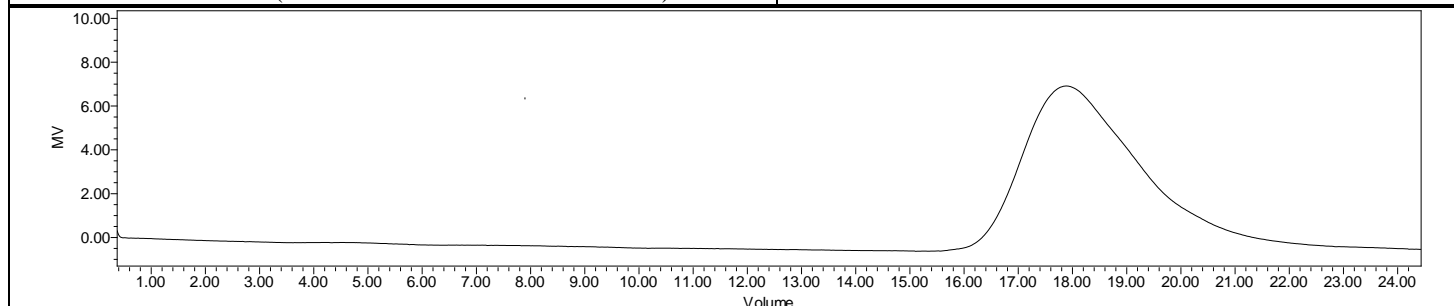
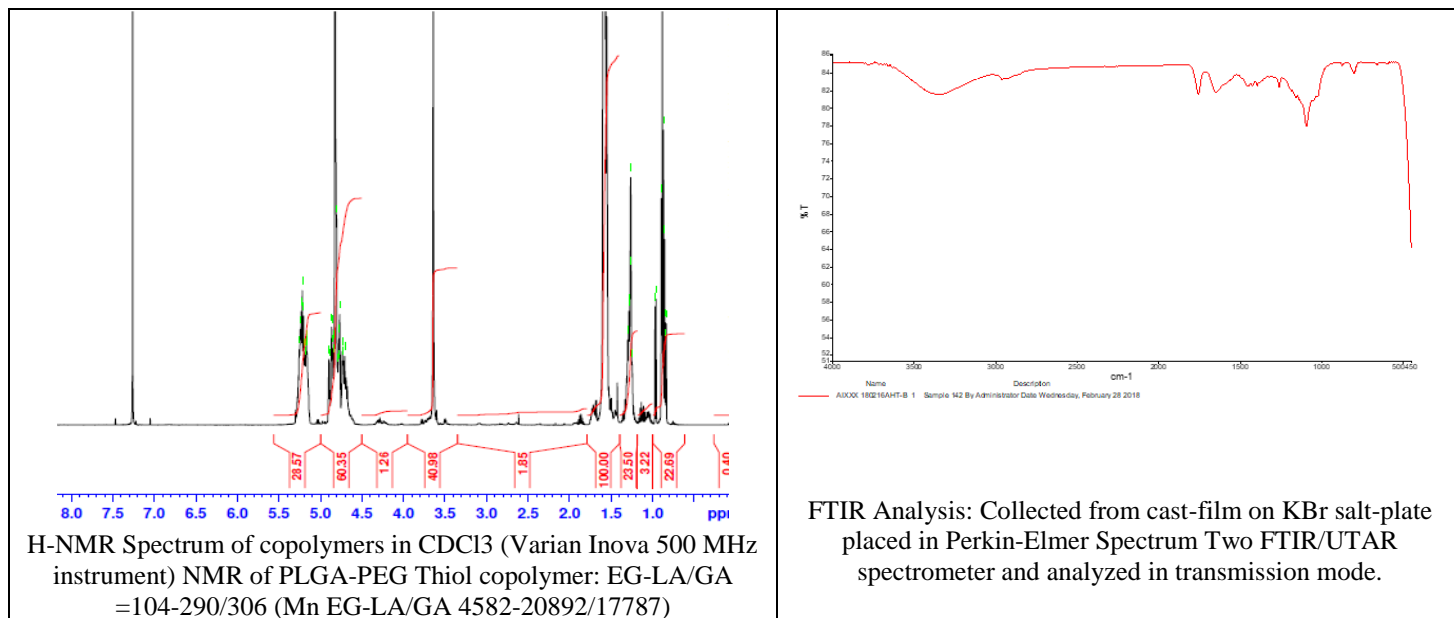


# No. AI164

# Certificate of Analysis



Product Name: Poly(lactide-co-glycolide)-b-Poly(ethylene glycol)-Cysteine ethyl ester (Thiol) (Mw ~ 40,000-5,000Da) (Lot# 180216AHT-B)



GPC Analysis Method: Waters Breeze 2 system with 1 ml/min THF flow across three GPC columns. Detection via refractive index, calibrated against polystyrene standards.

| Polymer         | M <sub>n</sub> (from GPC)  | M <sub>w</sub> (from GPC) | PDI  |
|-----------------|----------------------------|---------------------------|------|
| PDLLA-PEG-Thiol | 47,373                     | 68,696                    | 1.45 |
| PEG-Precursor   | Average Mn by GFC – 4,600* |                           |      |

\*- from MFG data

## Structure of PDLLA-PEG-Thiol copolymers

