

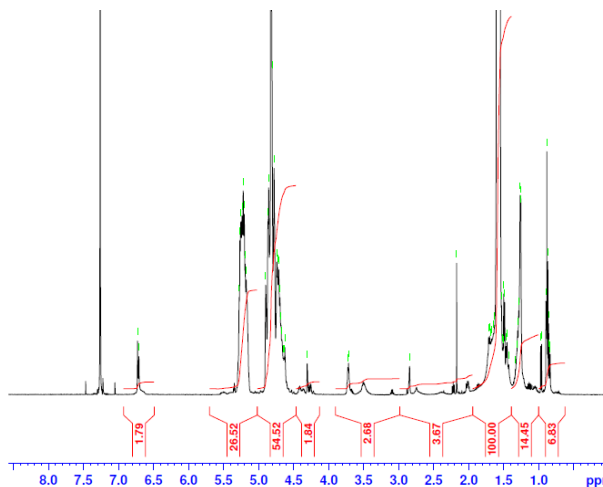
No. AI160

Certificate of Analysis

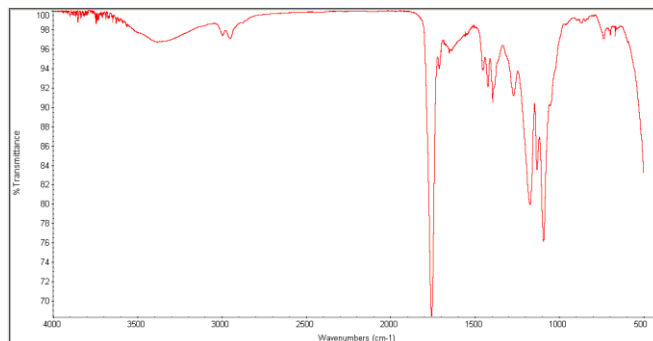


Product Name: Poly(lactide-co-glycolide) maleimide endcap (50:50 LA:GA),

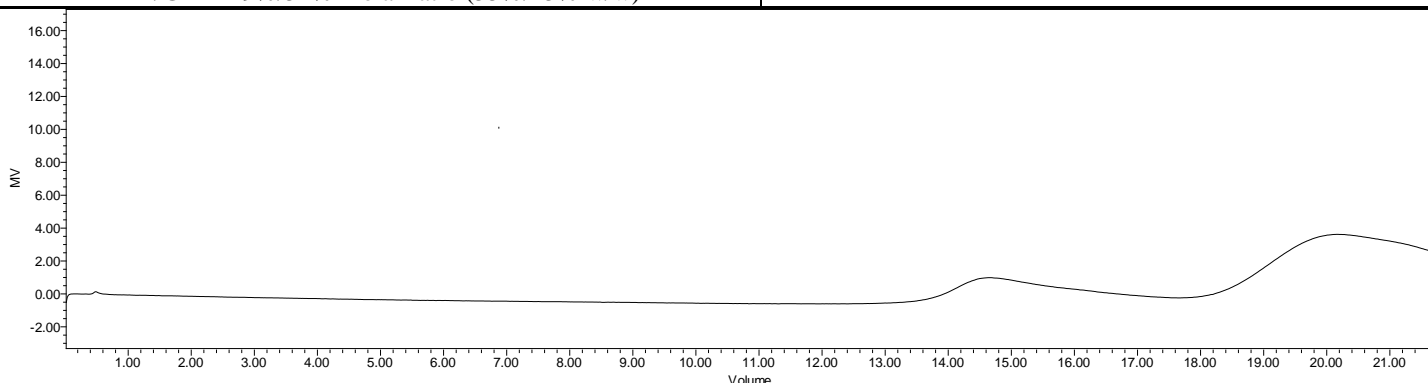
M_w : 7,000-20,000Da (Lot#: 171020JSG-A)



H-NMR Spectrum of copolymers in CDCl₃ (Varian Inova 500 MHz instrument) NMR of PLGA copolymers:
LA/GA = 49%/51% molar ratio (55%/45% w/w)



FTIR Analysis: Collected from cast-film on KBr salt-plate placed in Protégé 460 spectrometer and analyzed in transmission E.S.P. mode.



GPC Analysis Method: Waters Breeze 2 system with 1 ml/min THF flow across three GPC columns. Detection via refractive index, calibrated against polystyrene standards.

Polymer	M_n (from GPC)	M_w (from GPC)	PDI
PLGA	6057	7529	1.24

• Structure of PLGA-Maleimide copolymers

