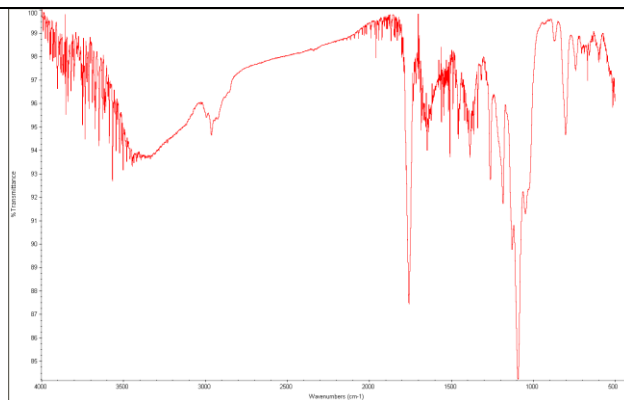
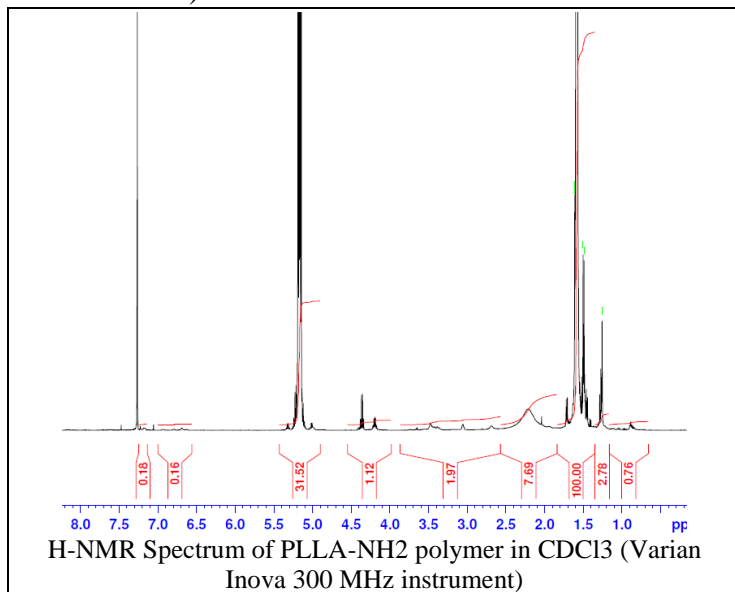


# No. AI154

# Certificate of Analysis

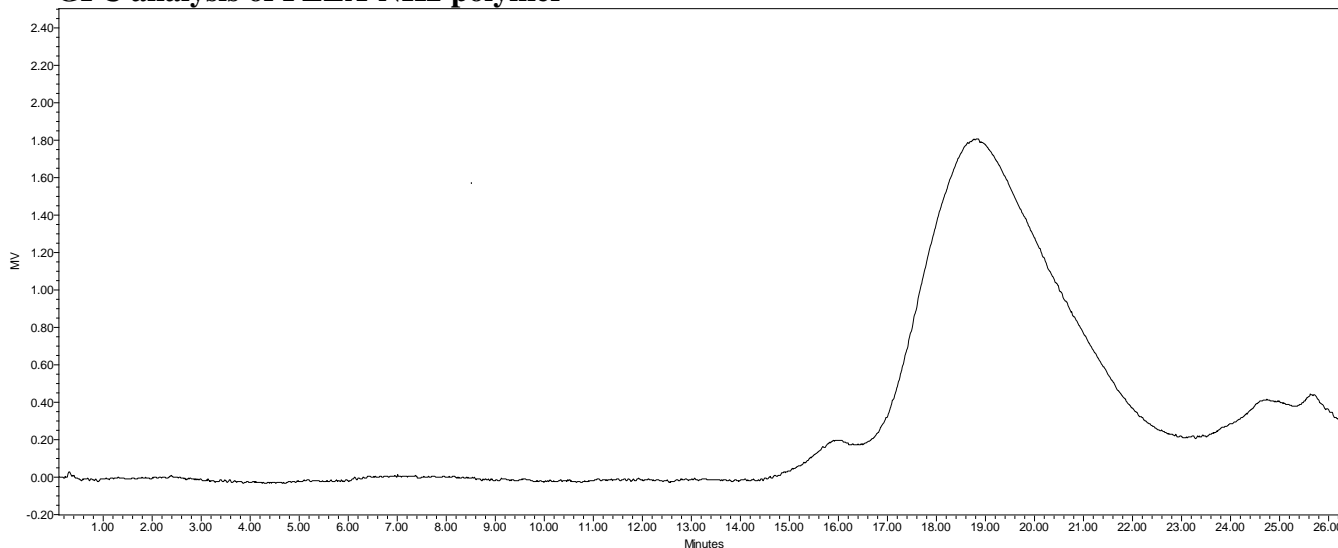


Product Name: Poly(L-lactide) amine endcap (ethylene diamine) (Mn 5,000 -10,000 Da) (Lot#: 70410FAJ-A)



FTIR Analysis: Collected from cast-film on salt-plate placed in Protégé 460 Spectrometer (Nicolet) and analyzed in transmission E.S.P. mode.

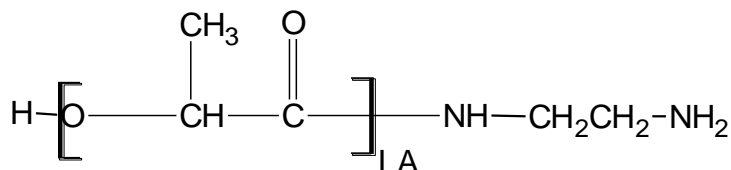
## • GPC analysis of PLLA-NH<sub>2</sub> polymer



GPC Analysis Method: Waters Breeze 2 system with 1 ml/min THF flow across three Phenogel 5um columns (Phenomenex). Detection via refractive index, calibrated against polystyrene standards.

Polymer	M <sub>n</sub> (from GPC)	M <sub>w</sub> (from GPC)	PDI
PLLA-NH <sub>2</sub>	9294	13,952	1.50

## • Structure of PLLA-NH<sub>2</sub> polymer



Material provided for research use only. Not for human usage.

PolySciTech Division of Akina, Inc. | 3495 Kent Avenue, West Lafayette, IN 47906  
765-464-0390 | www.polysciotech.com

For research use only.