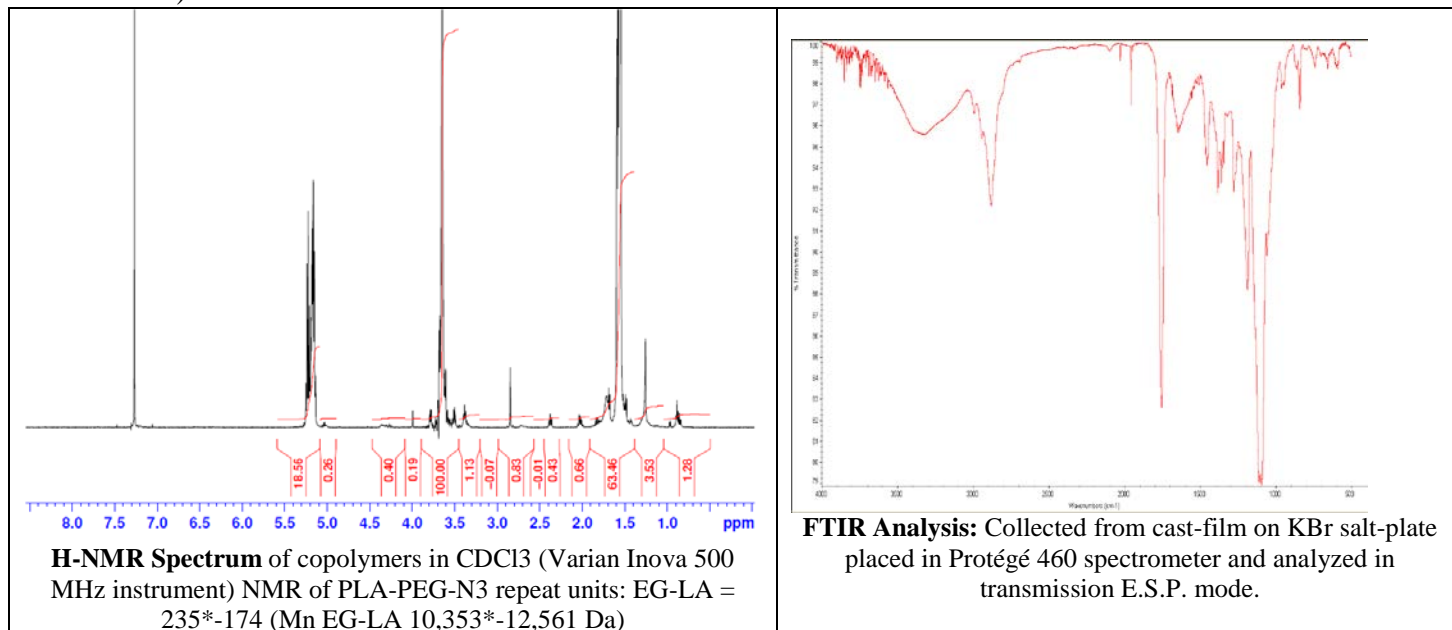


# No. AI152

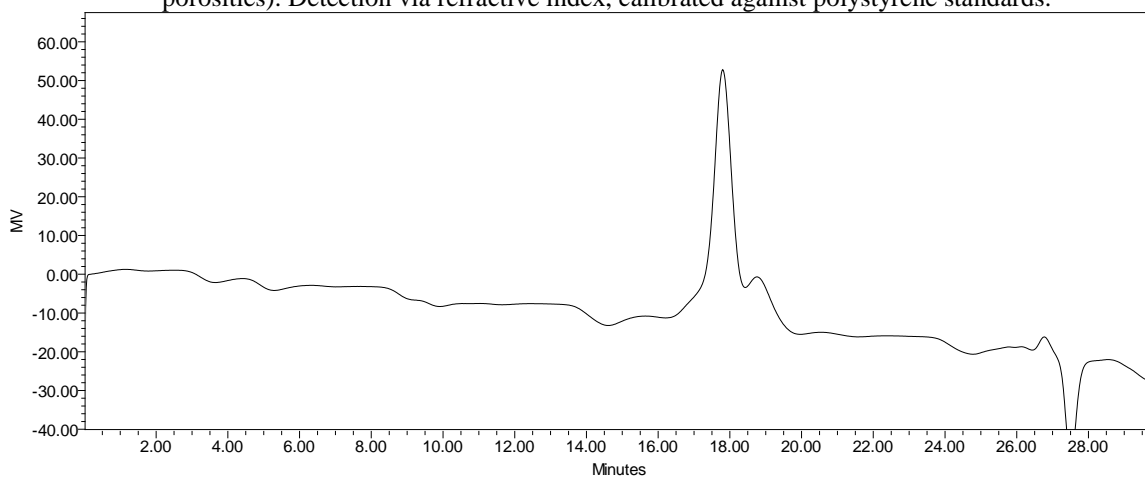
# Certificate of Analysis



Product Name: Poly((D,L)Lactic acid)-*b*-Poly(ethylene glycol)-Azide (16,000-10,000Da) (Lot#: 70119JSG-A)



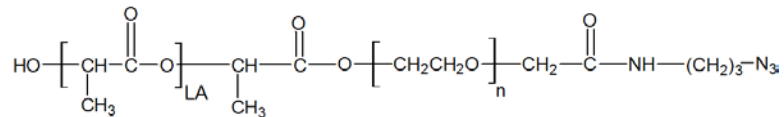
- GPC Analysis Method:** Waters Breeze 2 system with 1 ml/min THF flow across three GPC columns (7.8 x 300 mm, mixed porosities). Detection via refractive index, calibrated against polystyrene standards.



Polymer	M <sub>n</sub> (from GPC)	M <sub>w</sub> (from GPC)	PDI
PDLA-PEG-Azide	32,163	35,952	1.37
PEG initiator*	Average Mw by GFC -10,300*		

\*- from MFG data

- Structure of PDLA-PEG-Azide**



Material provided for research use only. Not for human use.