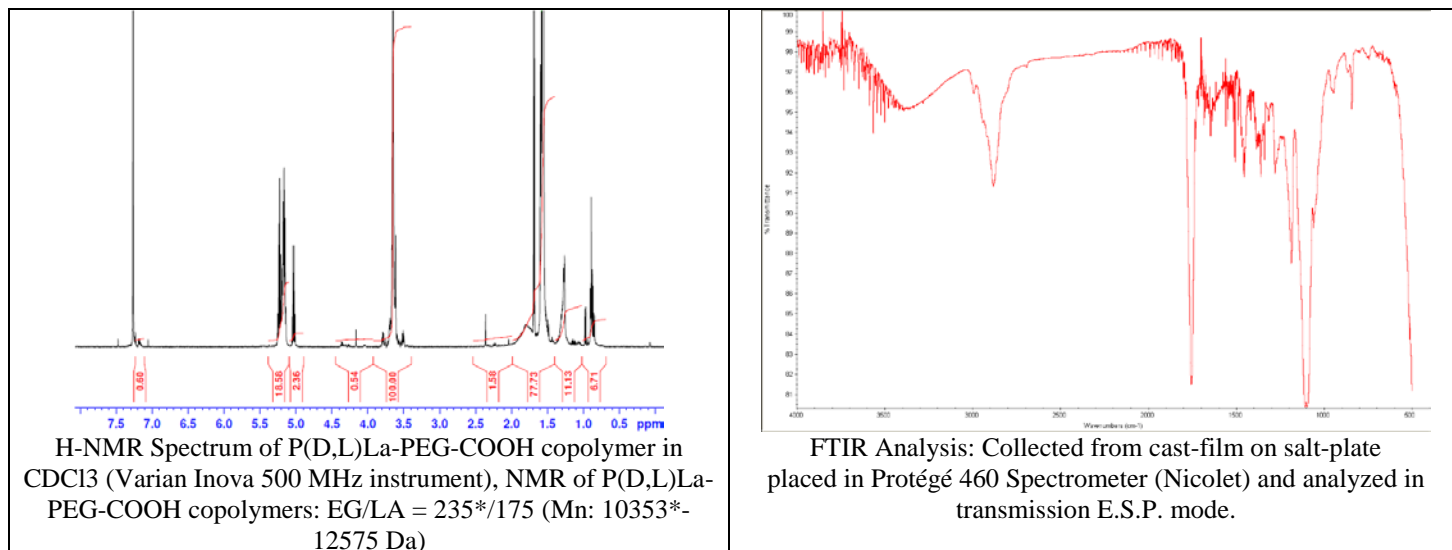


No. AI151

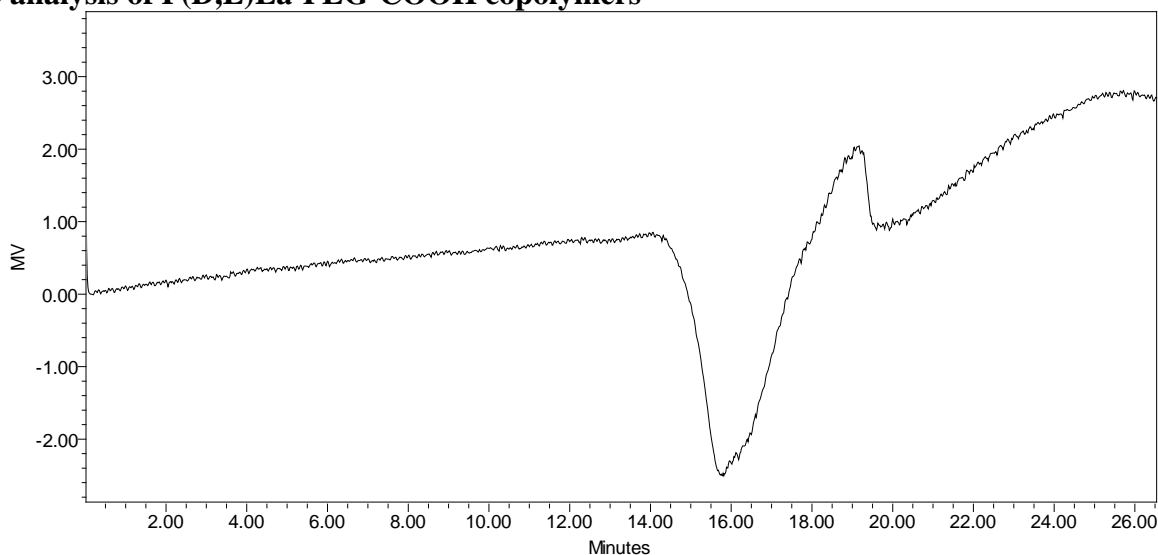
Certificate of Analysis



Product Name: Poly((D,L)lactide)-b-Poly(ethylene glycol)- carboxylic acid copolymers (Mw ~ 16,000-10,000 Da) Lot# 70109JSG-A



- GPC analysis of P(D,L)La-PEG-COOH copolymers**



Analysis Method: Waters Breeze 2 system with 1 ml/min DCM flow across three GPC columns. Detection via refractive index, calibrated against polystyrene standards.

Polymer	Mn (from GPC)	Mw (from GPC)	PDI
P(D,L)La-PEG-COOH	22,979	27,855	1.21
PEG(10,000) Initiator*	Mn by GFC = 10,300 Da		

*MFG information.

- Structure of P(D,L)La-PEG-COOH copolymers**

