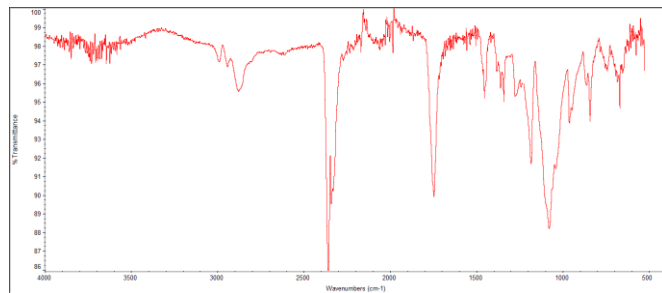
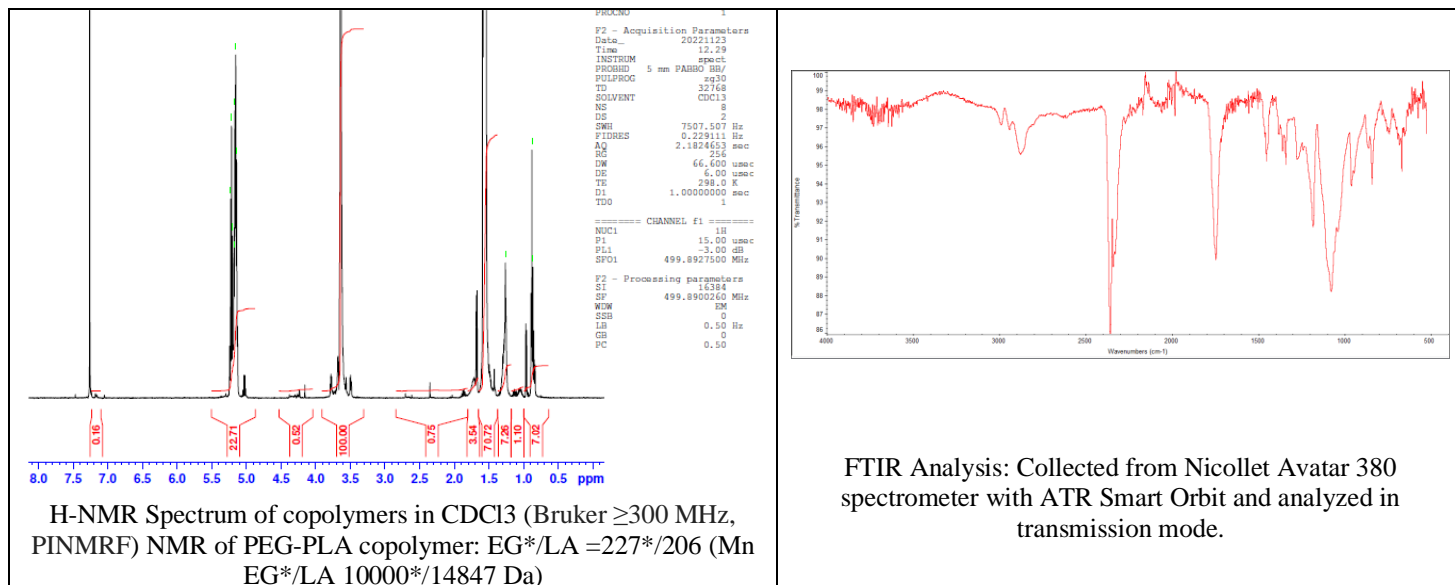


# No. AI151

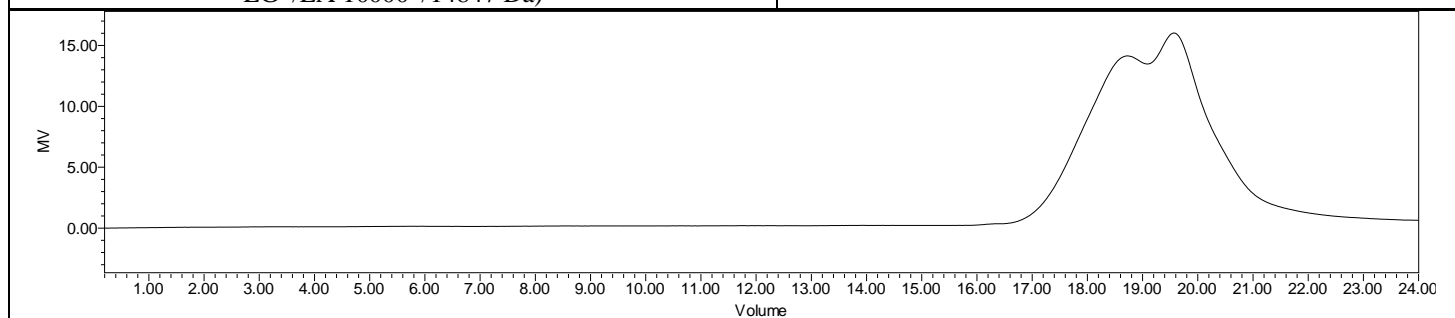
# Certificate of Analysis



Product Name: Poly((D,L)lactide)-b-Poly(ethylene glycol)- carboxylic acid copolymers (Mw ~ 16,000-10,000 Da) (Lot #221118RAI-A)



FTIR Analysis: Collected from Nicolet Avatar 380 spectrometer with ATR Smart Orbit and analyzed in transmission mode.



GPC-ES Analysis Method: Waters Breeze 2 system with 1 ml/min THF flow across three GPC columns. Detection via refractive index, calibrated against polystyrene standards.

Polymer	M <sub>n</sub> (from GPC)	M <sub>w</sub> (from GPC)	PDI
P(D,L)La-PEG-COOH	35,665	52,713	1.48
PEG(10,000) Initiator*	M <sub>n</sub> by GFC = 10,000 Da		

\*- from MFG data

## Structure of P(D,L)La-PEG-COOH copolymers

