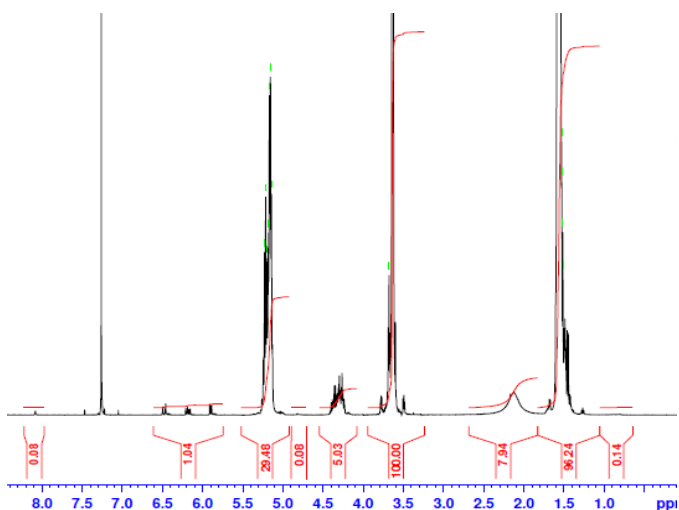


No. AI145

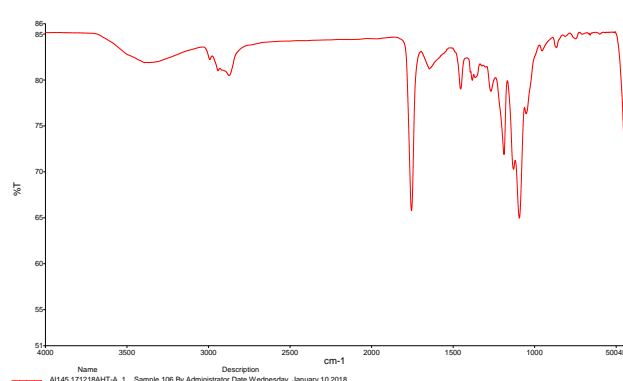
Certificate of Analysis



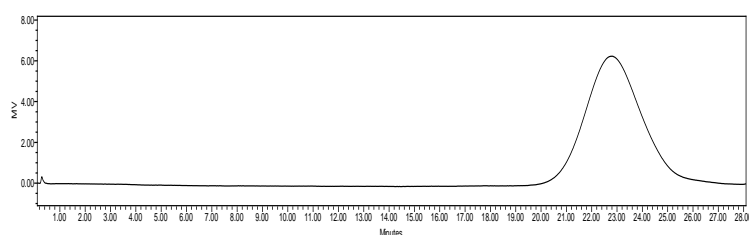
Product Name: Poly(DL-lactide)-b-Poly(ethylene glycol)-b-Poly(DL-lactide) diacrylate endcap (1700-1500-1700Da) (Lot#: 171218AHT-A)



H-NMR Spectrum of copolymers in CDCl₃ (Varian Inova 500 MHz instrument) NMR of PLA-PEG-PLA repeat units: EG-LA=34-44 (Mn EG-LA 1497-2886Da)



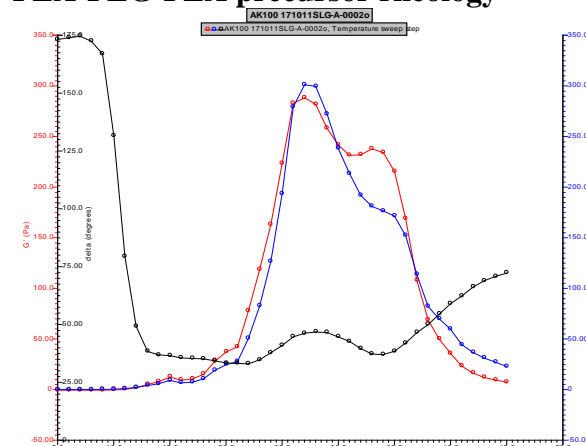
FTIR Analysis: Collected from cast-film on KBr salt-plate placed in Perkin-Elmer Spectrum Two FTIR-UATR spectrometer and analyzed in transmission mode.



GPC Analysis Method: Waters Breeze 2 system with 1 ml/min THF flow across three GPC columns. Detection via refractive index, calibrated against polystyrene standards.

Polymer	M _n (from GPC)	M _w (from GPC)	PDI
PLA-PEG-PLA diacrylate	5,569	6,589	1.18

PLA-PEG-PLA precursor rheology



Precursor Rheology performed on AR550 (TA instruments) with 60mm 2degree cone on 20% w/v polymer in water dissolved over 3 days with stirring at 4°C. Viscosity of solution at 0.1 (sec⁻¹) and 5°C was measured (1minute peak hold 5 second test intervals). Rheology performed by oscillating at constant 6.283 rad/s, 0.1% strain, in increments of 1°C ranging from 5-45°C with 1 minutes of temperature equilibration at each point.

Precursor Viscosity (20% w/v, 5°C) **5.963 mPa/s**

Structure of PLA-PEG-PLA diacrylate

