

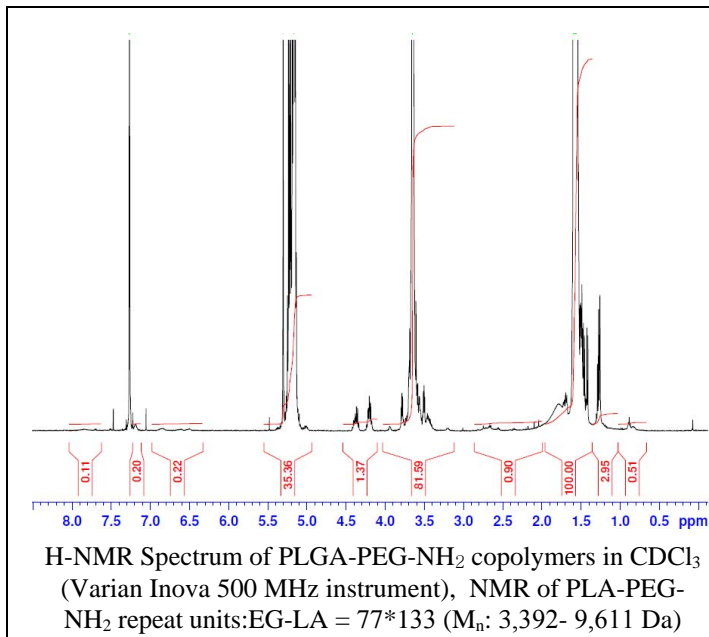
# No. AI141

# Certificate of Analysis

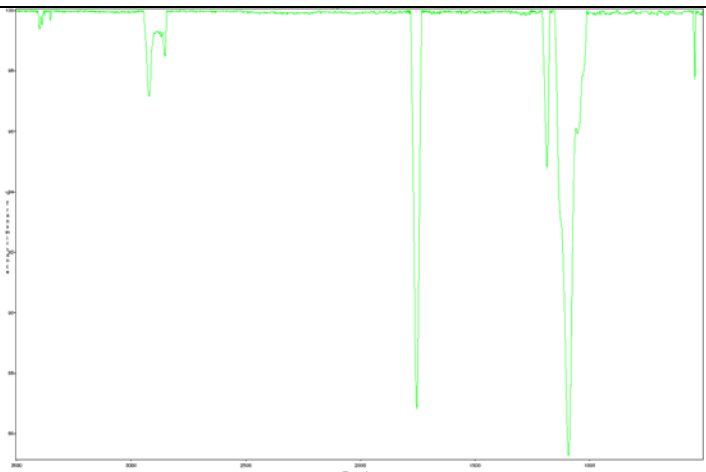


Product Name: Poly(D,L lactide)-b-Poly(ethylene glycol)-Amine copolymers (Mw ~ 15,000:3400Da) (Lot#: 60622JSG-A) (REV A: HNMR)

## H-NMR

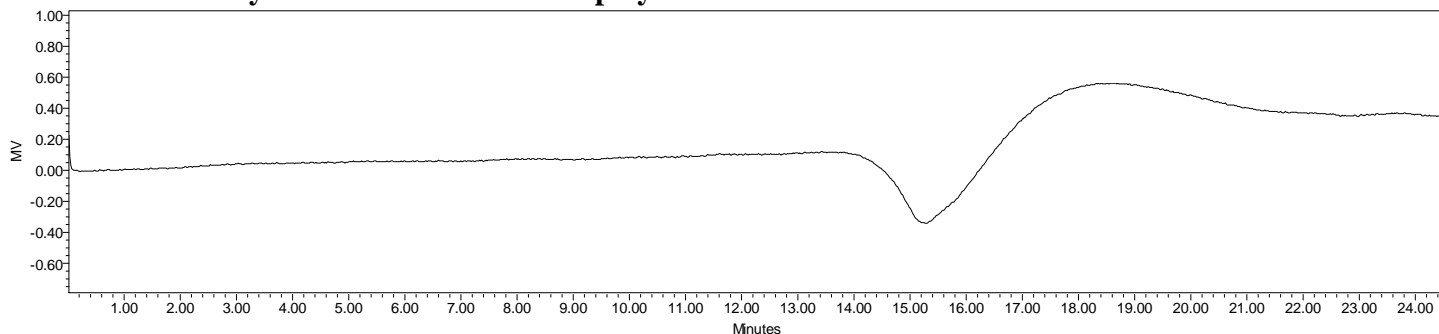


## FTIR



Analysis Method: Collected from cast-film on KBR salt-plate placed in Satellite FTIR (Thermo-Mattson) and analyzed in transmission mode.

### • GPC analysis of PLA-PEG-NH<sub>2</sub> copolymers

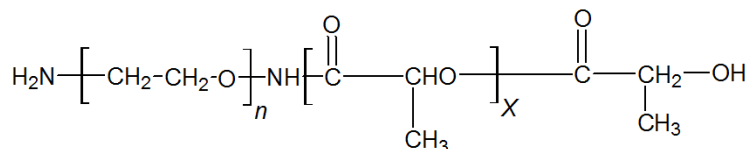


Analysis Method: Waters Breeze 2 system with 1 ml/min DCM flow across three 300x7.6 mm GPC columns (mixed porosities). Detection via refractive index, calibrated against polystyrene standards.

Polymer	M <sub>n</sub> (from GPC)	M <sub>w</sub> (from GPC)	PDI
PLA-PEG-NH <sub>2</sub>	21,648	34,646	1.60
PEG precursor	Average Mw 4500*		

\* - Data provided by Manufacturer

### • Structure of PLA-PEG-NH<sub>2</sub> copolymers



Material provide for research use only. Not for human use.