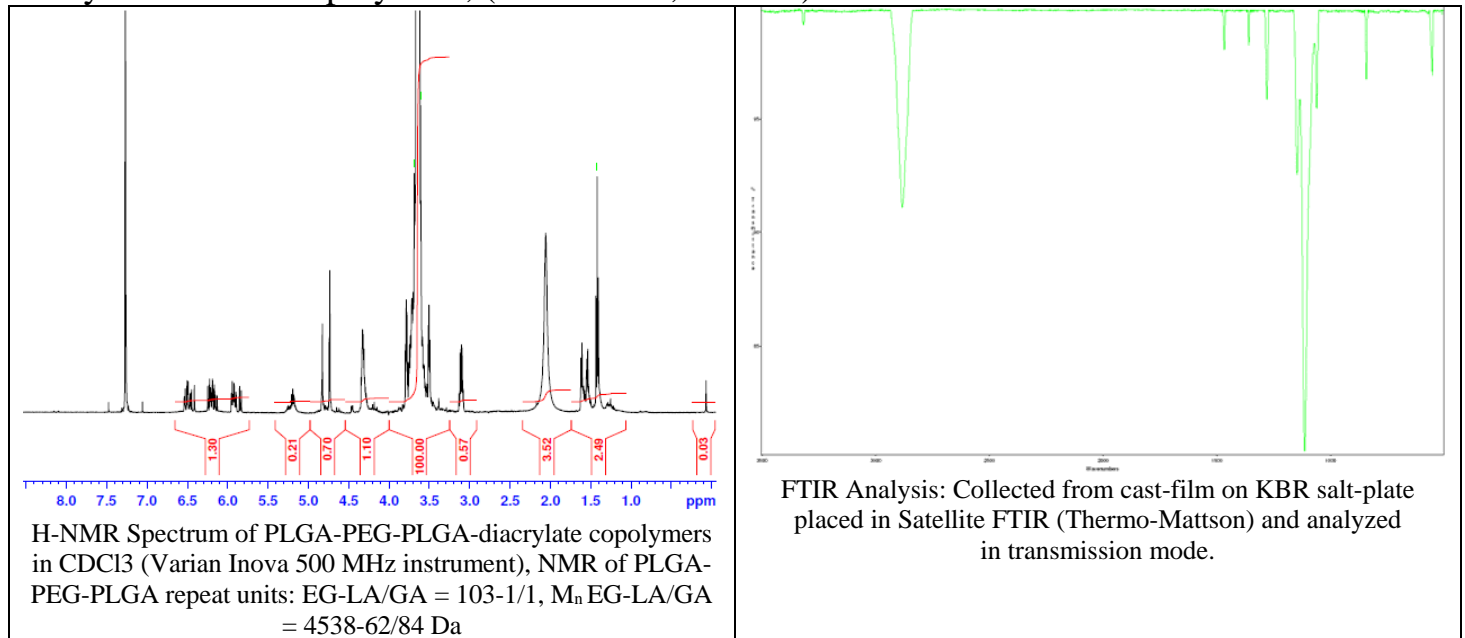
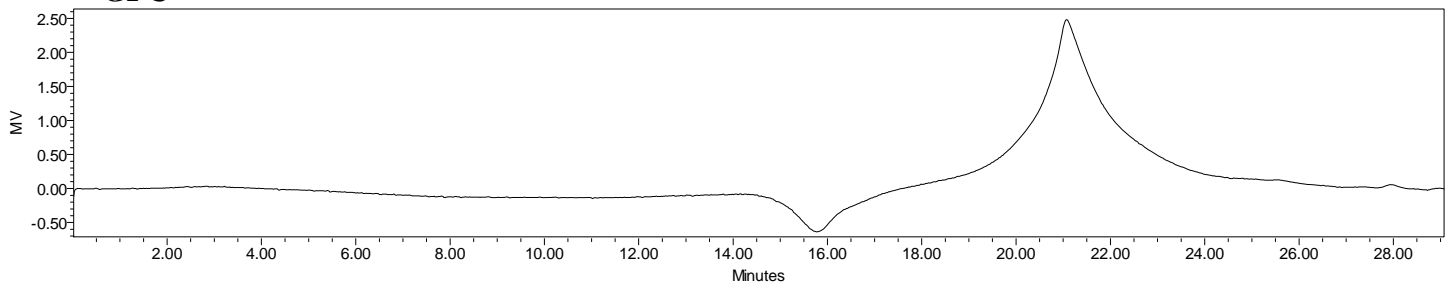


No. AI138 Certificate of Analysis

Product Name: Poly(lactide-co-glycolide)-*b*-Poly(ethylene glycol)-*b*-Poly(lactide-co-glycolide)-diacrylate triblock copolymers, (MW~130:5,000:130) 50:50 Da Lot# 60623MJK-A



• GPC

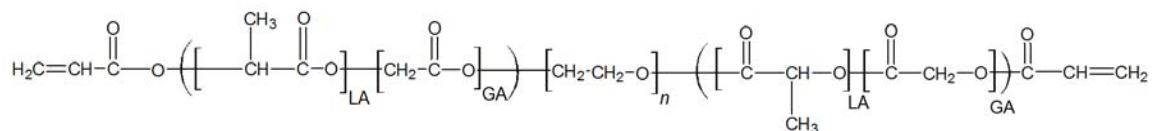


Detection via refractive index, calibrated against polystyrene standards.

Polymer	M _n (GPC)	M _w (GPC)	PDI
PLGA-PEG-PLGA Diacrylate	4435	6792	1.53
PEG precursor	M _n - 4,536*		

*- MFG provided data.

• Structure of PLGA-PEG-PLGA-diacrylate copolymers



Material provided for research use only. Not for human use.

PolySciTech Division of Akina, Inc. | 3495 Kent Avenue, West Lafayette, IN 47906
765-464-0390 | www.polysciotech.com

For research use only.