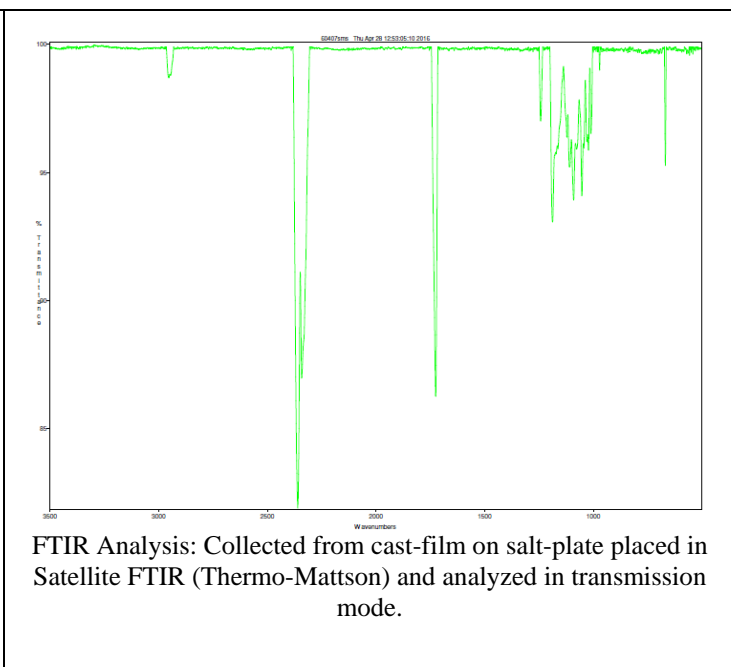
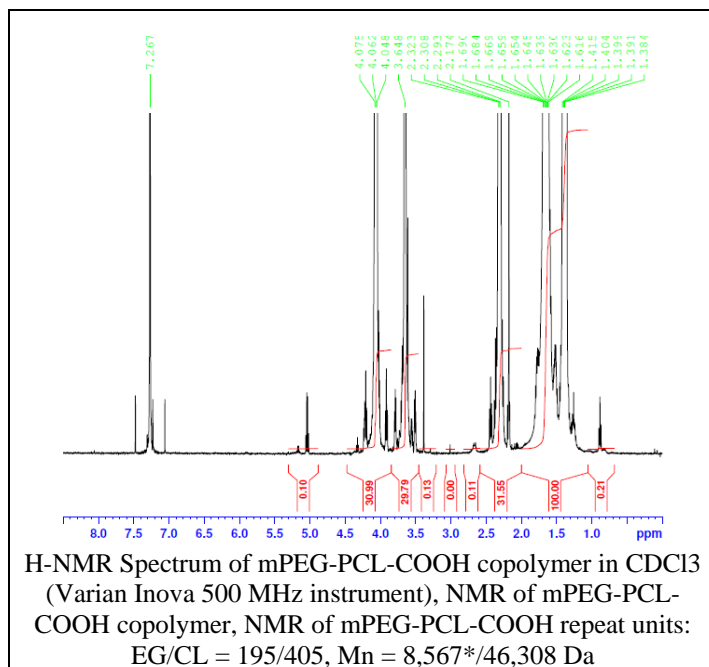


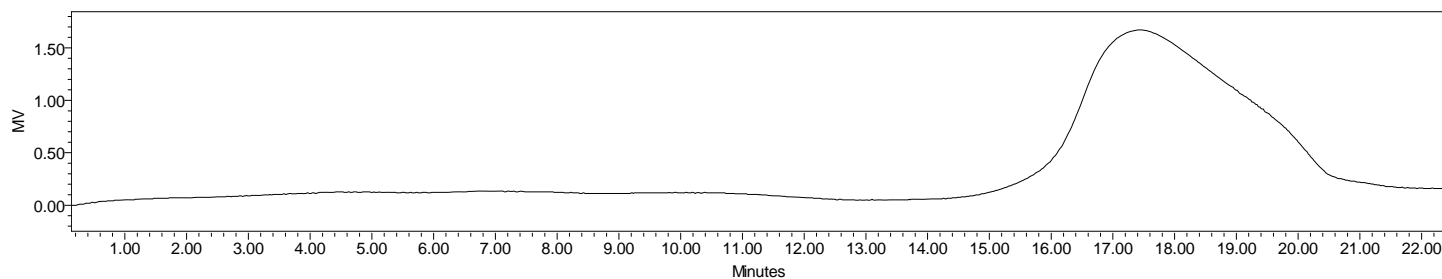
# No. AI129

# Certificate of Analysis

Product Name: Methoxy Poly(ethylene glycol)-b-Poly(caprolactone) carboxylic acid  
(10,000:40,000 Da) (Lot#: 60407SMS-A)



- GPC analysis of mPEG-PCL-COOH copolymer**

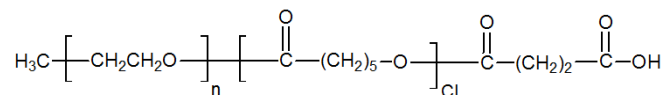


Analysis Method: Waters Breeze 2 system with 1 ml/min DCM flow across three Phenogel 5um columns (Phenomenex).  
Detection via refractive index, calibrated against polystyrene standards.

Polymer	Mn (from GPC)	Mw (from GPC)	PDI
mPEG-PCL-COOH	30,001	48,896	1.63
mPEG 10,000 precursor*	Mn-8,567*		1.1

\*manufacturer provided data

- Structure of mPEG-PCL-COOH copolymer**



Material provided for research use only. Not for human use.

PolySciTech Division of Akina, Inc. | 3495 Kent Avenue, West Lafayette, IN 47906

765-464-0390 | www.polysciotech.com

For research use only.