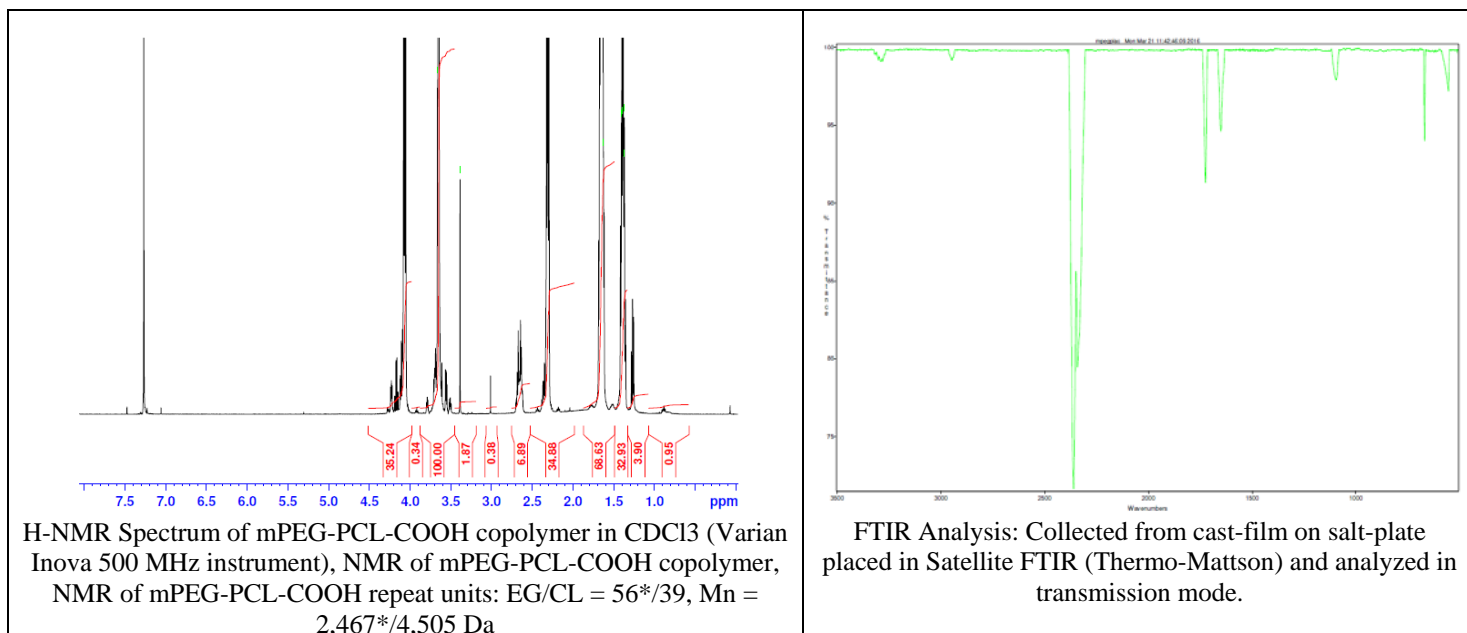


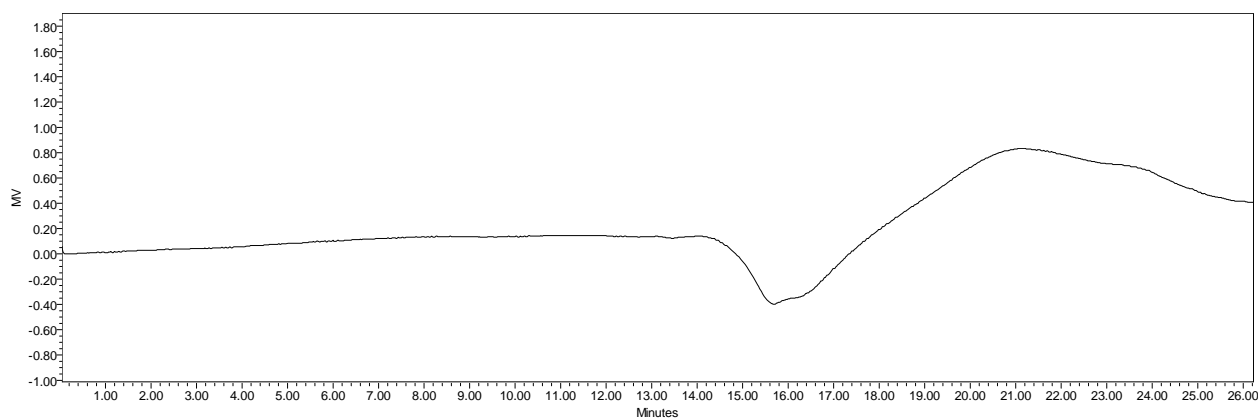
# No. AI123

# Certificate of Analysis

Product Name: Methoxy Poly(ethylene glycol)-b-Poly(caprolactone) carboxylic acid  
(2,000:3,000 Da) (Lot#: 60318FAJ-A)



- GPC analysis of mPEG-PCL-COOH copolymer**

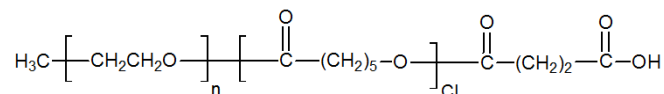


Analysis Method: Waters Breeze 2 system with 1 ml/min DCM flow across three Phenogel 5um columns (Phenomenex). Detection via refractive index, calibrated against polystyrene standards.

Polymer	Mn (from GPC)	Mw (from GPC)	PDI
mPEG-PCL-COOH	2,024	5,469	2.70
mPEG precursor*	2,468	2,511	1.02

\*run against PEG standards

- Structure of mPEG-PCL-COOH copolymer**



Material provided for research use only. Not for human use.