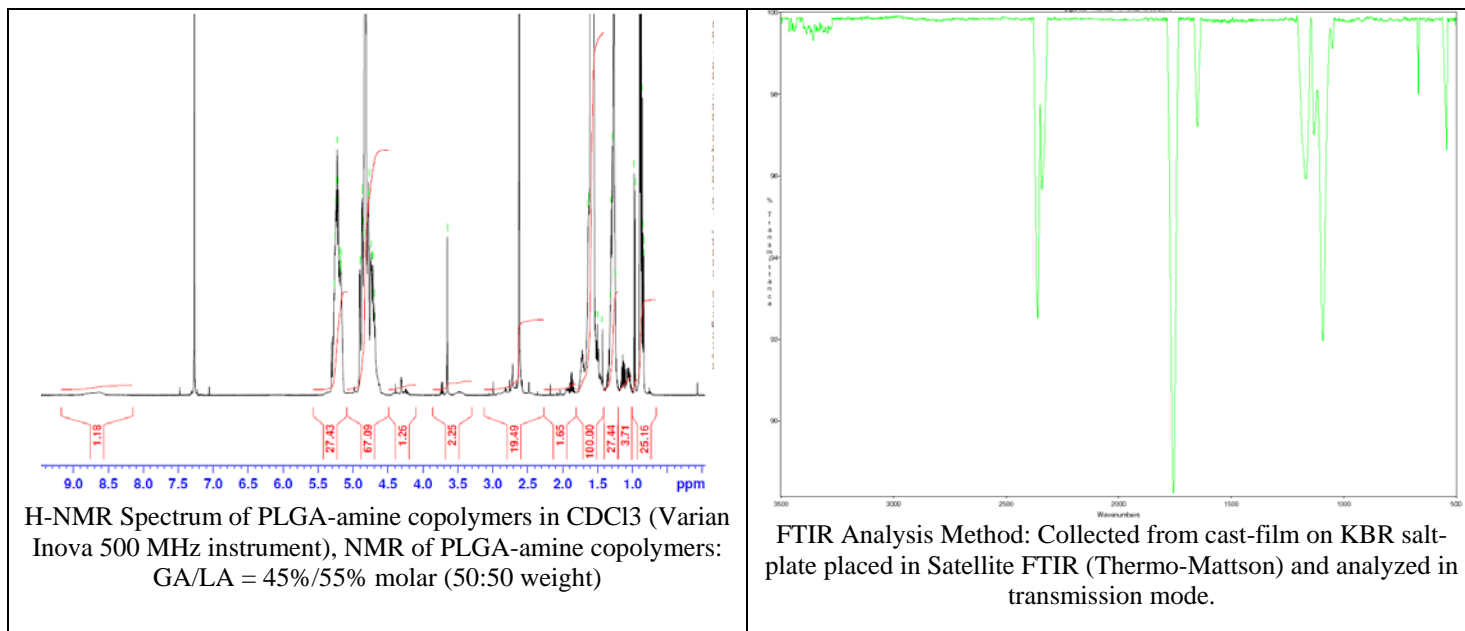


No. AI122

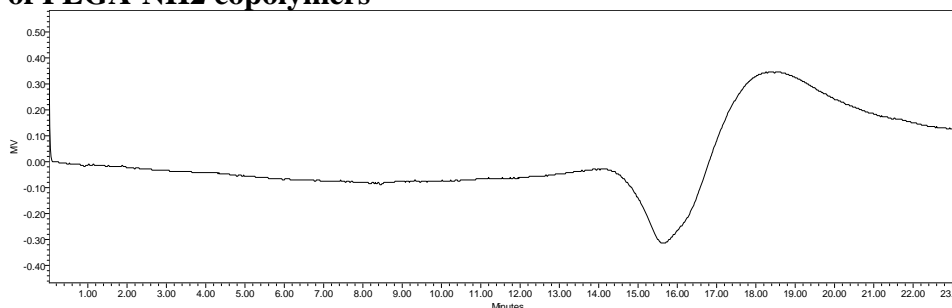
Certificate of Analysis



Product Name: Poly(lactide-co-glycolide) succinic dihydrazide amine endcap (Mn 5,000-10,000 Da) (Lot#: 60302ELH-A)



• GPC analysis of PLGA-NH₂ copolymers



SampleName: PLGA-NH₂ 60302ELH-A

Analysis Method: Waters Breeze 2 with 1 ml/min DCM flow across two Phenogel 5 μ m columns and one PLgel Resipore column (Agilent). Detection via refractive index, calibrated against polystyrene standards.

Polymer	Mn (from GPC)	Mw (from GPC)	PDI
PLGA-NH ₂	9215	20,004	2.17

• Structure of PLGA-NH₂ copolymers

