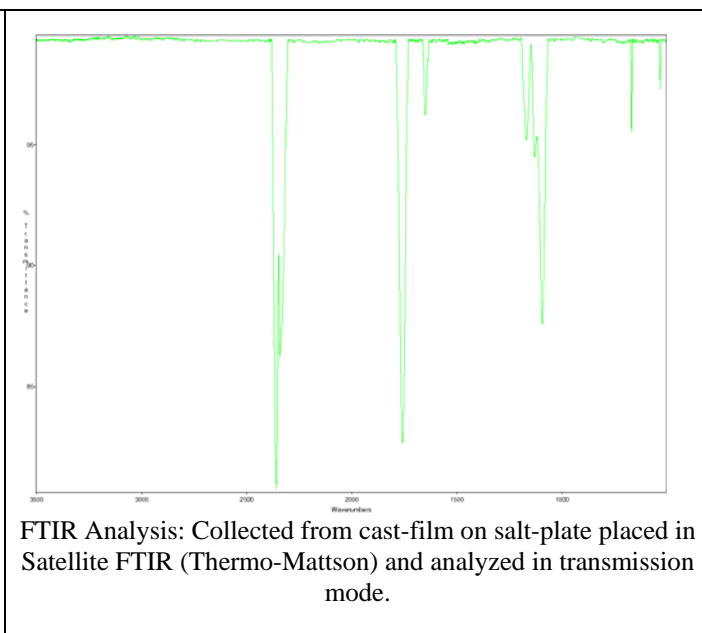
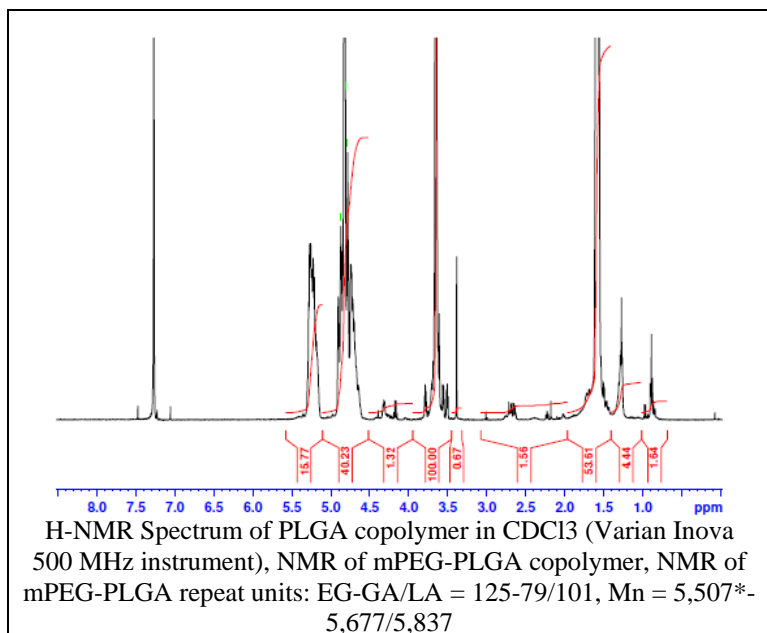
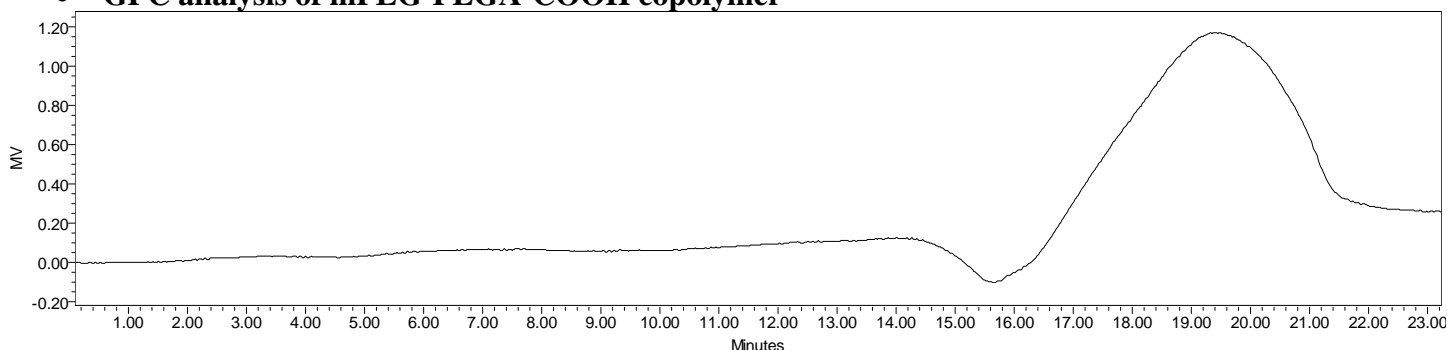


# No. AI121 Certificate of Analysis

Product Name: Methoxy Poly(ethylene glycol)-b-Poly(lactide-co-glycolide) carboxylic acid  
(5,000:10,000 Da) (Lot#: 60216FAJ-B)



- GPC analysis of mPEG-PLGA-COOH copolymer**

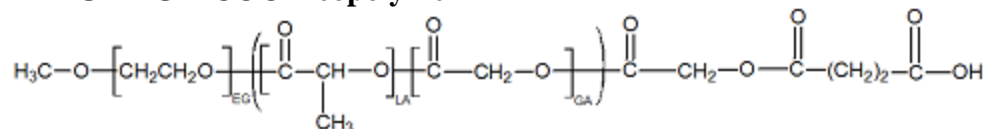


Analysis Method: Waters Breeze 2 system with 1 ml/min DCM flow across two Phenogel 5µm columns and one PLgel Resipore column (Agilent). Detection via UV/Vis, calibrated against polystyrene standards.

Polymer	Mn (from GPC)	Mw (from GPC)	PDI
mPEG-PLGA-COOH	9,405	18,521	1.97
mPEG precursor*	5,488	5,847	1.07

\*run against PEG standards

- Structure of mPEG-PLGA-COOH copolymer**



Material provided for research use only. Not for human use.