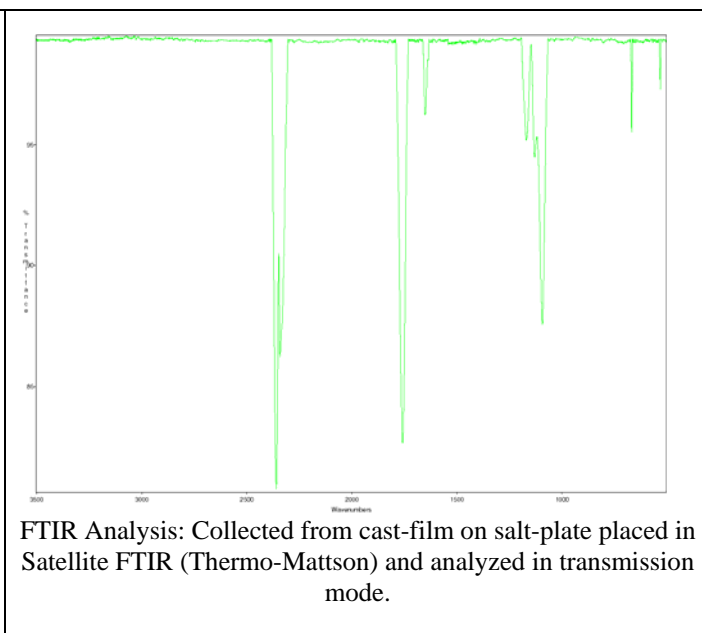
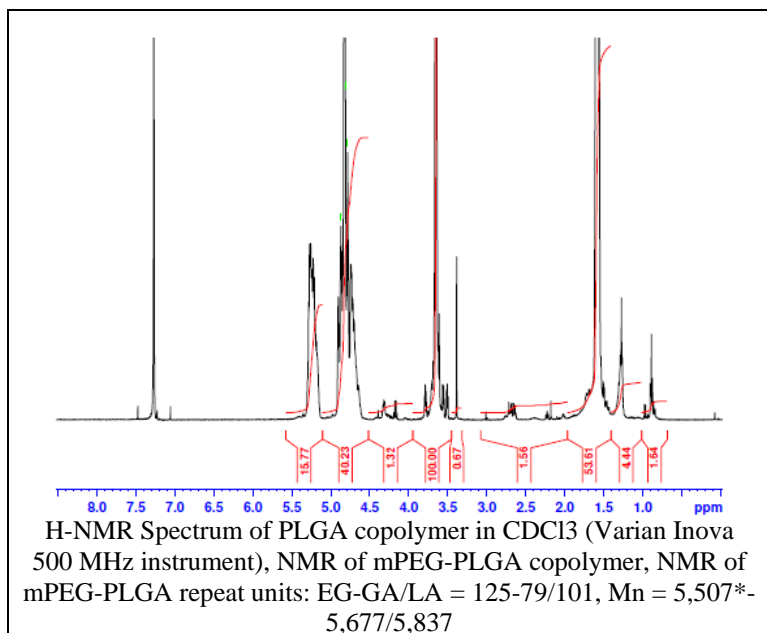


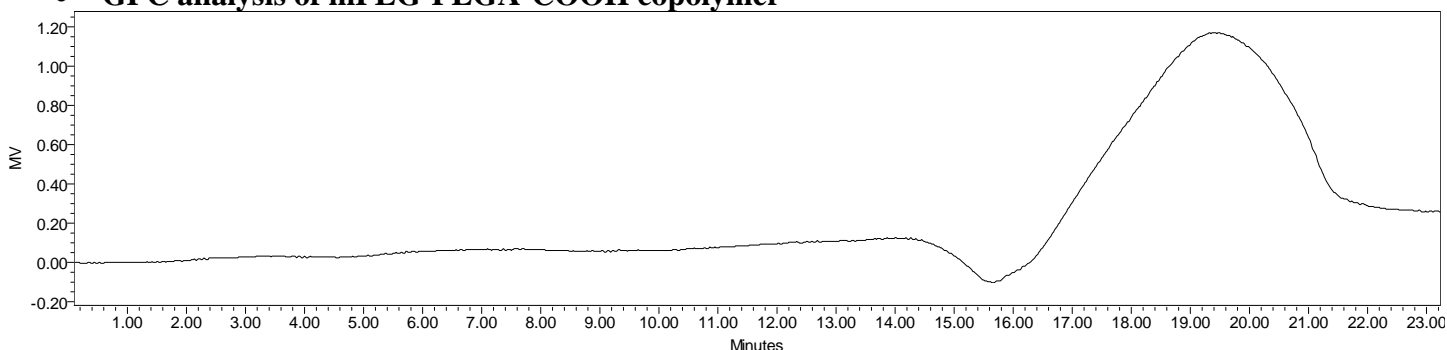
No. AI120

Certificate of Analysis

Product Name: Methoxy Poly(ethylene glycol)-b-Poly(lactide-co-glycolide) carboxylic acid
 (5,000:10,000 Da) (Lot#: 60216FAJ-B)



• GPC analysis of mPEG-PLGA-COOH copolymer

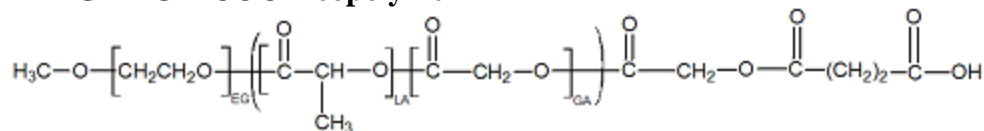


Analysis Method: Waters Breeze 2 system with 1 ml/min DCM flow across two Phenogel 5µm columns and one PLgel Resipore column (Agilent). Detection via UV/Vis, calibrated against polystyrene standards.

Polymer	Mn (from GPC)	Mw (from GPC)	PDI
mPEG-PLGA-COOH	9,405	18,521	1.97
mPEG precursor*	5,488	5,847	1.07

*run against PEG standards

• Structure of mPEG-PLGA-COOH copolymer



Material provided for research use only. Not for human use.

PolySciTech Division of Akina, Inc. | 3495 Kent Avenue, West Lafayette, IN 47906

765-464-0390 | www.polysciotech.com

For research use only.